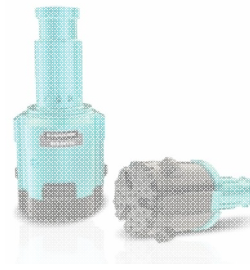


A close-up photograph of a person's hand pointing towards a glowing power button icon. The person is wearing a white dress shirt and a blue necktie. The background is blurred. The power button icon is a white symbol on a circular, glowing orange and yellow background.

EVERDIGM Mining Solution



Top-hammer drill rigs



Rocktools



Exploration drill rigs



Down The Hole Drill rigs

Contents

- ✓ *Product line-up*
- ✓ *Working Capacity*
- ✓ *Overall Machine Structure*
- ✓ *Major features*
- ✓ *Specifications*
- ✓ *Standard Equipment*
- ✓ *Optional Equipment*
- ✓ *Specifications Chart*
- ✓ *Market Positioning*
- ✓ *Easy Operation*
- ✓ *R&D Capability*
- ✓ *Certification*
- ✓ *Marketing & Promotion*
- ✓ *Customer Service*



Product line-up



Drilling Equipment EVERDIGM



" T350/ECD35
" T400/ECD40
" T450/ECD45
" T500/ECD50 (2015.06~)
" T550/ECD60 (2015.12~)

THD Drill Rig



" D700
" D800
(2016.01~)

DTH Drill Rig



" ECR12
" ECR18

Core Drill Rig



" **EMR08**
" **EMR16**
(2015.06~)

Multi Drill Rig

Drilling Tools EVERDIGM ROCKTOOLS

Blast Hole Drilling (THD)



Top Hammer Rock Tools

Geo-thermal & Well Drilling

Blast Hole Drilling (DTH)



DTH Hammers & Bits

Exploration Drilling (RC)



Coring Tools & RC Hammers (2014~)

Construction Drilling (Piling & Anchoring)



Overburden Drilling Tools

➤ Hole-diameter range


EVERDIGM DTH DRILL RIGS

Specification

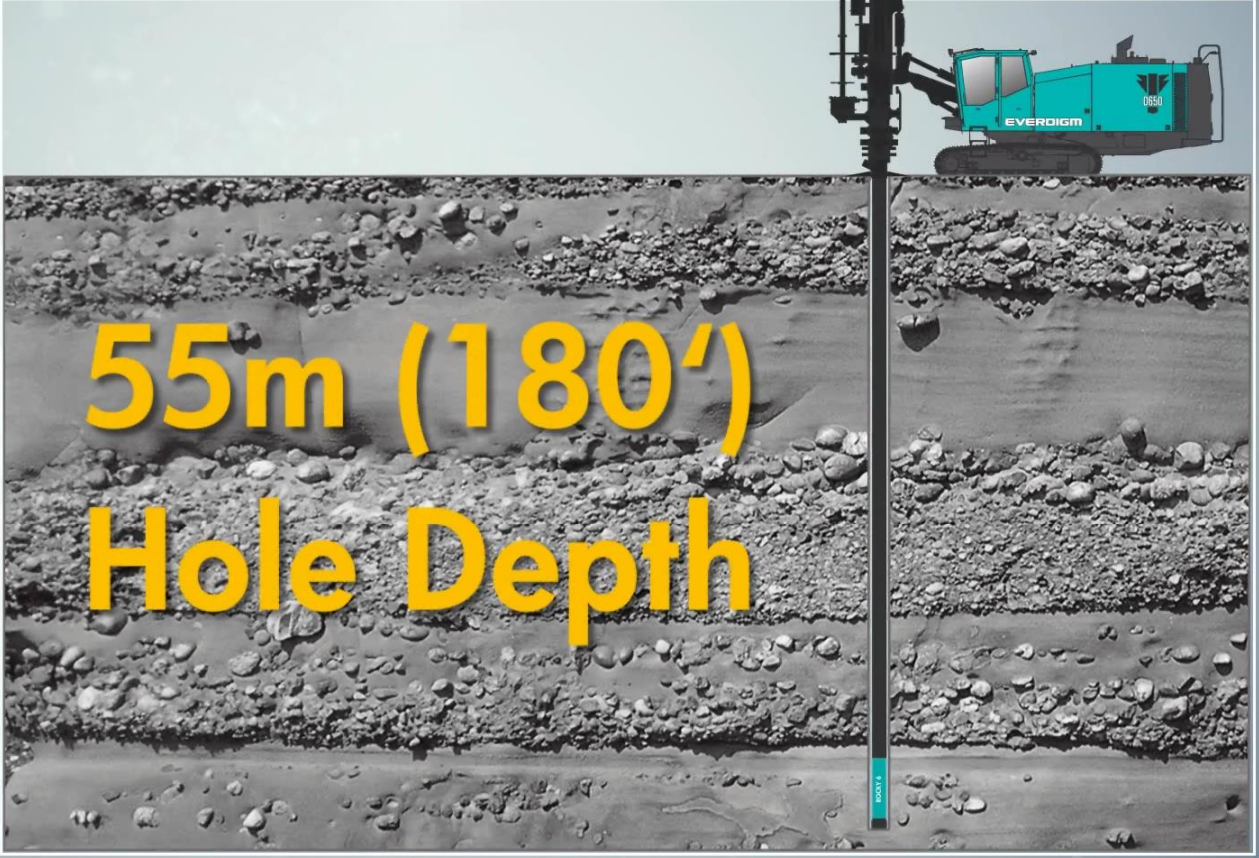


➤ Maximum Hole Depth

EVERDIGM DTH DRILL RIGS Specification



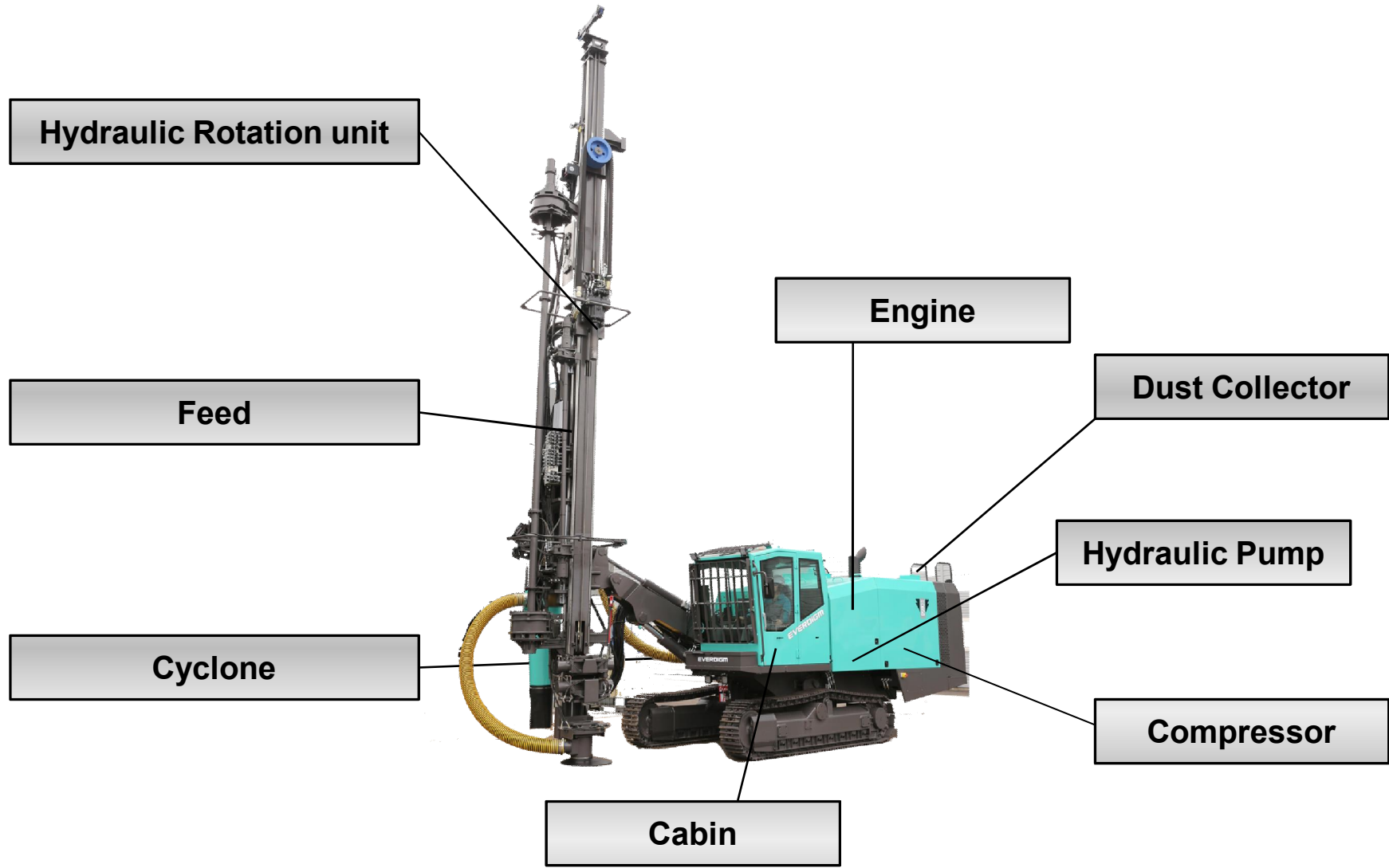
D700
EVERDIGM



55m (180')
Hole Depth

The image shows a cross-section of a hole drilled by an EVERDIGM D700 DTH drill rig. The hole is 55 meters (180 feet) deep. The rig is shown at the top of the hole, and the hole is filled with a mixture of sand and gravel. The rig is a teal-colored tracked machine with a long vertical mast and a drill bit at the bottom. The hole is shown in a black and white photograph, with the rig and the text '55m (180') Hole Depth' overlaid in yellow. The rig is shown in a teal color in the top right corner of the image.

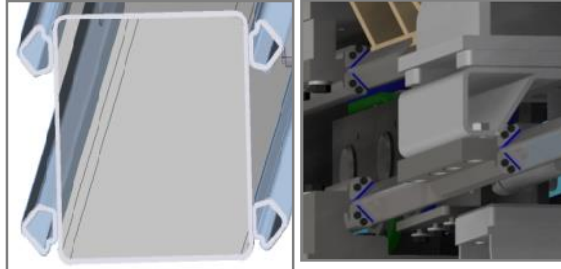
Overall Machine Structure



Overall Machine Structure



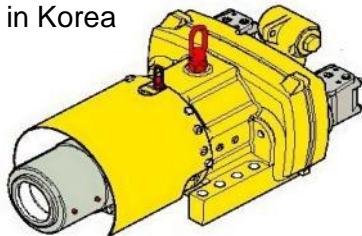
Mast & Drilling System



- ✓ Durable mast structure
- ✓ Adapting Drawn steel profile &
- ✓ Spring steel plates
- ✓ Slide Pad to minimize friction &
- ✓ Wear of sliding area

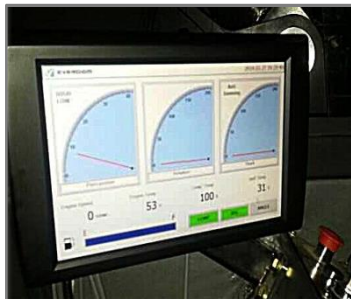
Rotary Head

- ✓ Built in Korea



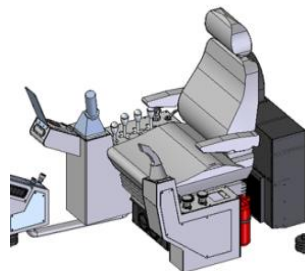
Monitoring System

- ✓ Color display, touch screen

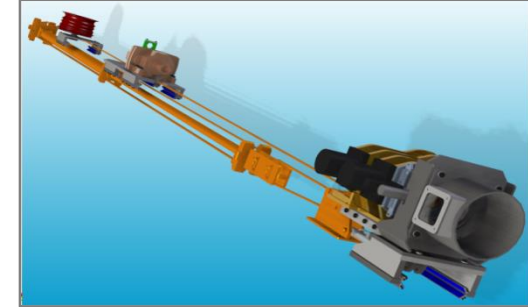


Cabin

- ✓ Joy-stick control

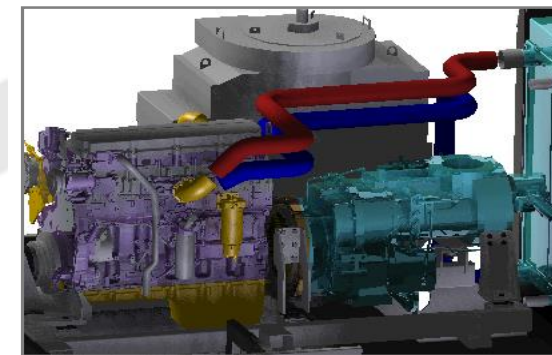


Feed System



- ✓ Cylinder + Rope Feed moving system

Engine & Air Compressor

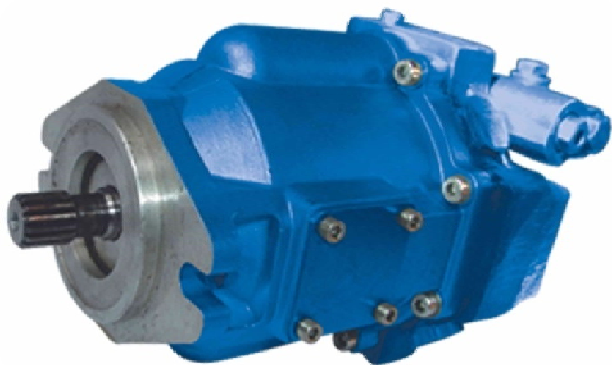


- ✓ CAT C13 Tier3 Engine Installed
- ✓ Pump-Engine-Comp. Direct mounting
→ Minimize loss of engine power
- ✓ Compressor : GHH (Germany)

Major Features



Hydraulic System



Kawasaki K3VL 112cc
Axial Piston Pump
Hydraulic oil tank capacity
98 gal (370 liter)

Engine



Caterpillar C13
440HP@1,800rpm
Tier III / stage 3

Compressor



HR2.5 (GHH land)
Max. 25 bar 363 psi
883cfm (25 m³/min)



Direct Connection

Hydraulic Rotation Unit

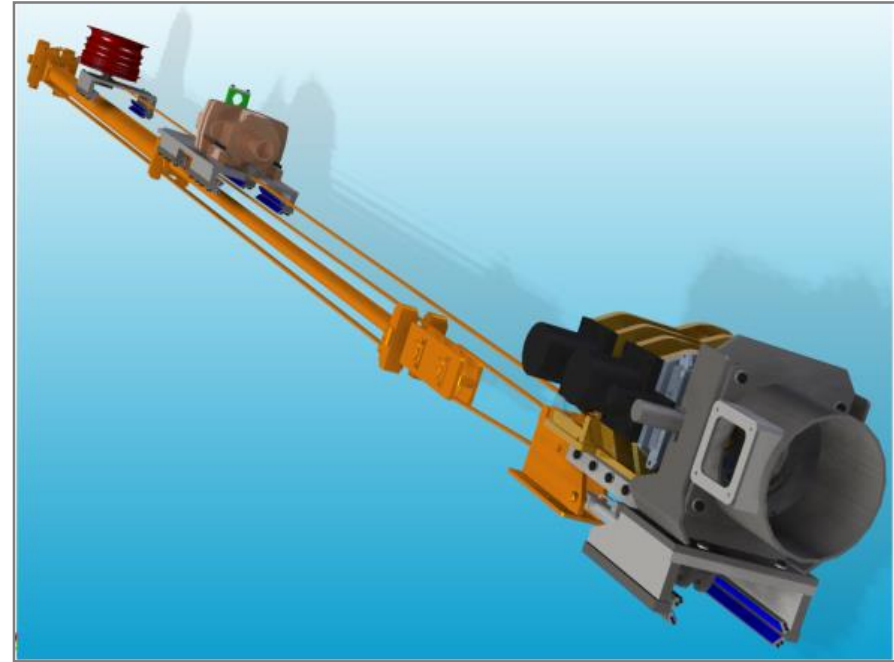


ERD65

Max RPM 53 RPM

Max Torque 5,700 Nm

Feed System



Feed Cylinder + Rope System

Feed system



- Feed force, max 8,992 lbf (40 kN)
- Tractive pull, max 11,240 lbf (50 kN)

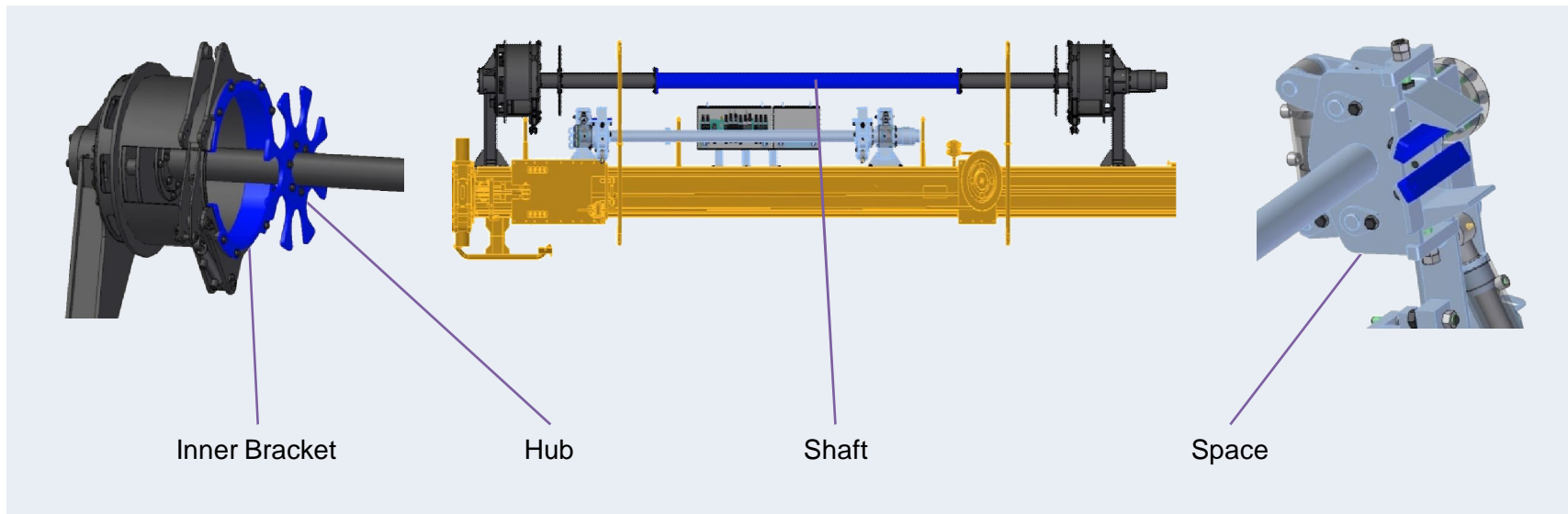
Specifications – Bit & Hammer & Tube Combination



Hammer, Bit, Tube Combination Chart

Hammer size		4 inch	5 inch	6 inch
Bit size	mm	102 ~ 127	127 ~ 152	152 ~ 178
	inch	4 ~ 5	5 ~ 6	6 ~ 7
Top Sub Thread	inch	2 - 3/8 (3.5) API Reg Pin	2 - 3/8 (3.5), 2 - 7/8 (4), 3 - 1/2 (4.5~5) API Reg Pin	
Applicable Tube	mm	89	89 ~ 114	102 ~ 127
	inch	3.5	3.5 ~ 4.5	4 ~ 5

**** Remark : Inner Bracket, Hub, Shaft and Space must be changed upon the applied tube size**



Main Specification

Hole Diameter Range	4.5" to 7.0" (115 ~ 178mm)
DTH Hammer Range	6", 5", 4"
Drill Tube Diameters	3.5", 4" and 4.5" (89, 102 and 115mm)
Drill Tube Length	20', 16', 13' (6m, 5m, 4m)
Max. Hole Depth	180' (55m)
Engine Output	328 kw (440hp) / 1,800 rpm
Air Delivery	883cfm (25 m ³ /min)
Air Pressure	Two stage screw type, 25 bar
Transport Weight	54,013 lbs (24,500 kg)
Transport Width	8.2' (2,500mm)

Dimensions

Weight	54,013 lbs (24,500 kg)
Overall Height	13' (3,950 mm)
Overall Length	36' (11,000 mm)
Overall Width	9.9' (3,020 mm)
Transportation Height	11.5' (3,500 mm)
Transportation Width	8.2' (2,500 mm)

Standard Equipment



Double Clamp



Centralized Greasing System



Auto Lubrication



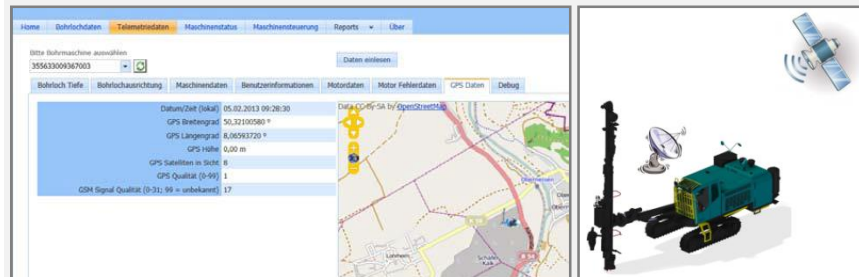
Monitoring System



Rear Stabilizer



Remote monitoring system



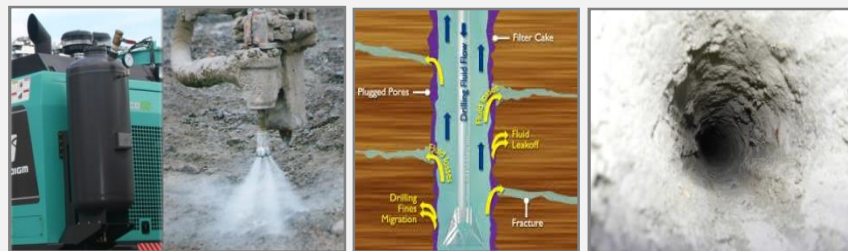
- ~ GPS positioning
- ~ Performance & condition monitoring with GSM access
- ~ Remote control via World Wide Website

Hydraulic Winch



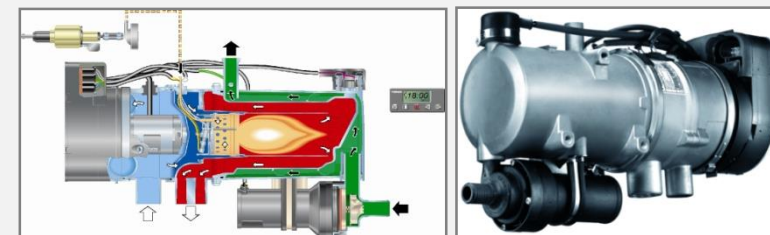
- ~ Winch Model : YAK-5
- ~ Lifting Capacity : 2,268kg (8mm / 40 or 60m)
- ~ Lifting drill tube for installing and removing from ARC

Water misting system



- ~ Indispensable application in broken or unstable ground, soil.
- ~ Prevent hole crumbling and bit jamming during drilling.
- ~ Dramatically improve drilling efficiency and productivity.

Cold climate kit



- ~ Engine start below -50°C temperature
- ~ Engine coolant hitting system by diesel fuel
- ~ Auto timer embedded
- ~ Webasto installed

Rear View Camera



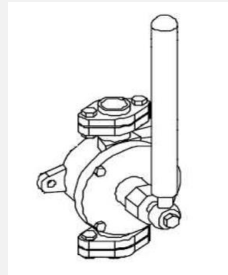
- ~ To check an object on the rear side for safety
- ~ Model : Doctor 700
- ~ Spec : 7+ 24V / 120 degree of lens angle

Start Motor Shut down Switch



- ~ To cut electric line completely for parts safety during maintenance

Manual Pump for filling Hyd. Oil



- ~ To provide oil with manual lever from the ground to oil inlet (For refilling Hyd. oil in a job site)

Electric Re-fueling pump



- ~ It is fuel pump operated by electric control (For refilling fuel in a job site)
- ~ Model : DPF45s-24 (45 lpm / 24V)

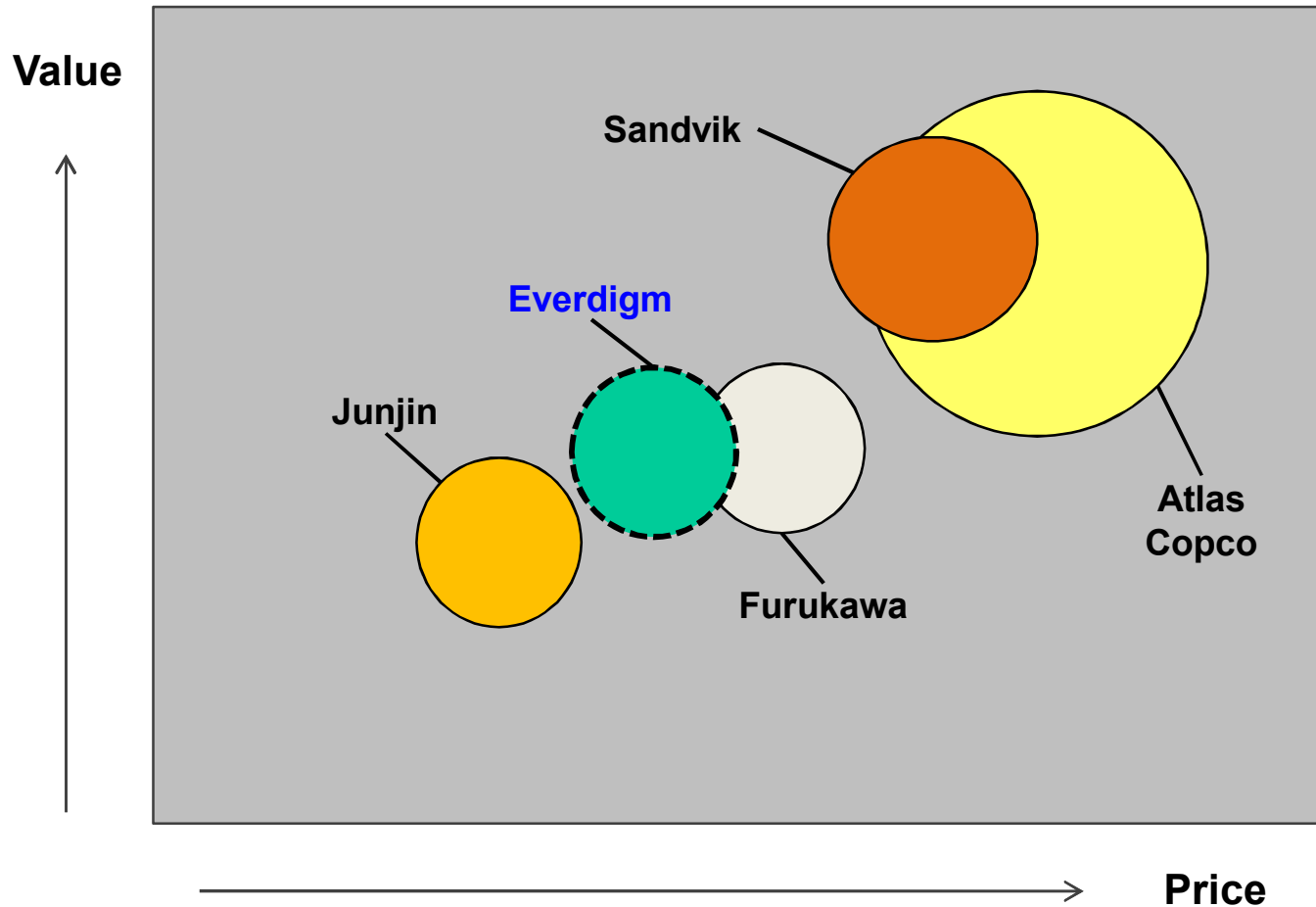
Specification Comparison



Sort	EVERDIGM D700	Atlas Copco D60	Sandvik DI550	Furukawa DCR20
Engine Power	Caterpillar C13 440HP@1,800rpm	Caterpillar C13 440HP@1,800rpm	Caterpillar C13 440HP@1,800rpm	Caterpillar C13 440HP@2,100rpm
Compressor	25m ³ /min 25bar	24.3m ³ /min 25bar	24.4m ³ /min 24bar	24.3m ³ /min 25bar
Hole Size inch	7	7	6.5	6.5
Drill Depth (Rod Diameter)	55m	55.5m (89-114mm) 31.5m (127-140mm)	40m	40m



Down The Hole Drill (Blast-hole)



- ✓ Low Initial Investment
- ✓ Drilling Performance
- ✓ Economical Operating Cost
- ✓ Top Brand from Korea
- ✓ Alternatives for Global Top Brand

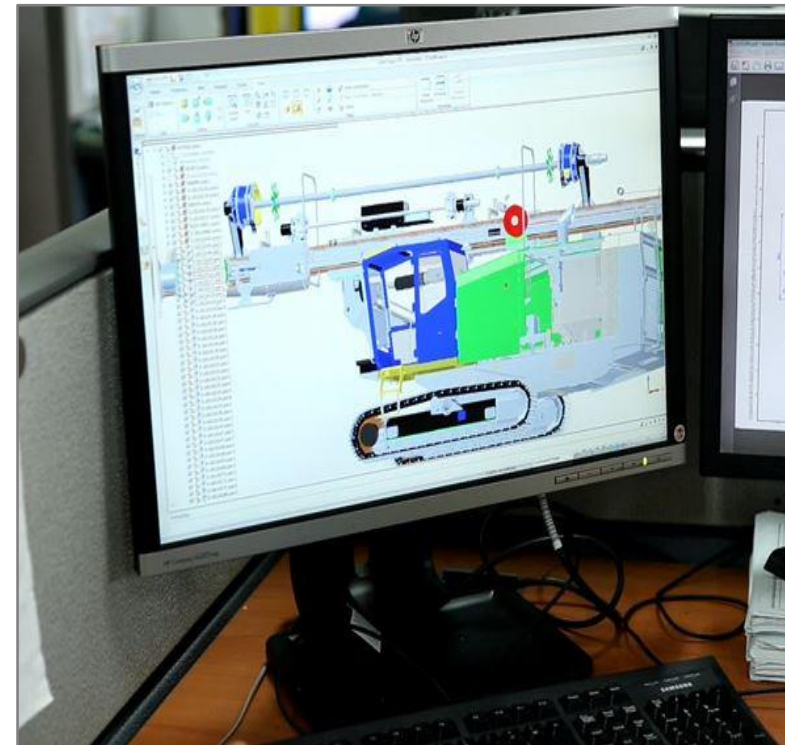
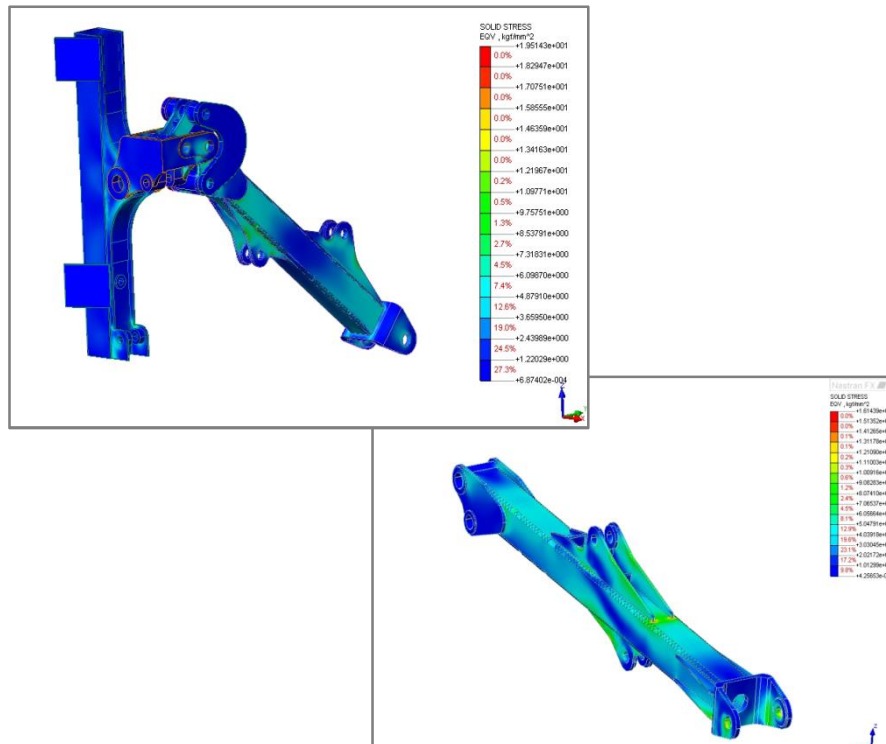
Comfort and Safe for Operator



- ✓ Easy Joy-stick Control
Hydraulic and electronic combine
- ✓ Spacious and well designed cabin for more comfortable operation
- ✓ Air-conditioning and heater as standard
- ✓ ROPs and FOPs approved cabin
- ✓ Noticeable monitoring system

Advanced Technology

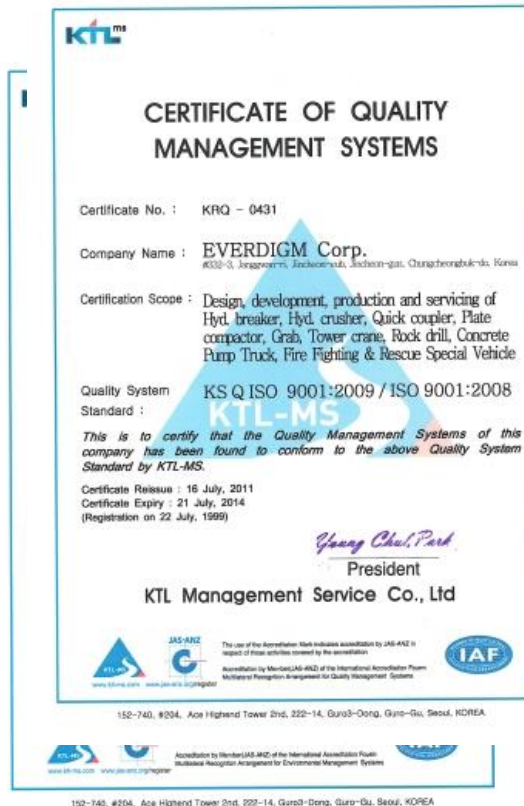
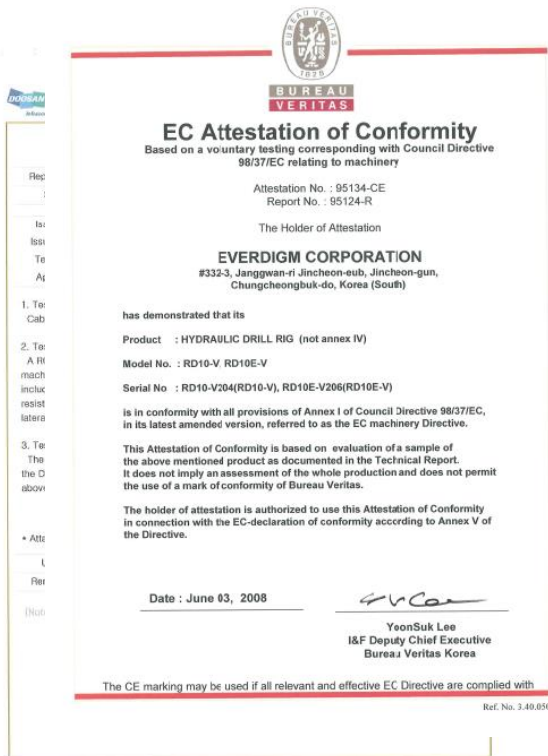
- Developing the Product Life cycle Management(PLM) system based on such as 3D design.
- 15 people for R&D center
- Repeated simulation from design to production to reduce product design failure.
- Utilizing highest level of quality control and manufacturing process
- Stress analysis simulation



Certification



- Obtained certificates : ROPS, FOPS, CE, GOST,RTN, ISO 9001, 14001,
- PL (Product Liability) Insured with worldwide coverage





Bauma China 2014 in Shanghai

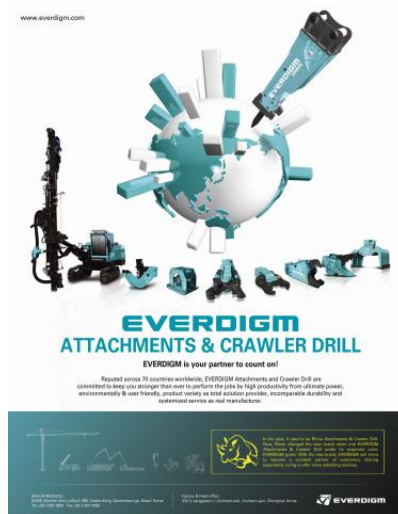


Bauma 2010 in Germany



Marketing & Promotion

- “ Exposed in all major exhibitions
- “ Active public relations by advertisement



Intermat 2012 in Paris

Supportive & Committed

- Customized Education Program based on the level of customer
- Fast response and customer oriented attitude.
- Giving practical solution working with major components company.
- Professional technicians and engineers with foreign language and drilling terminology.



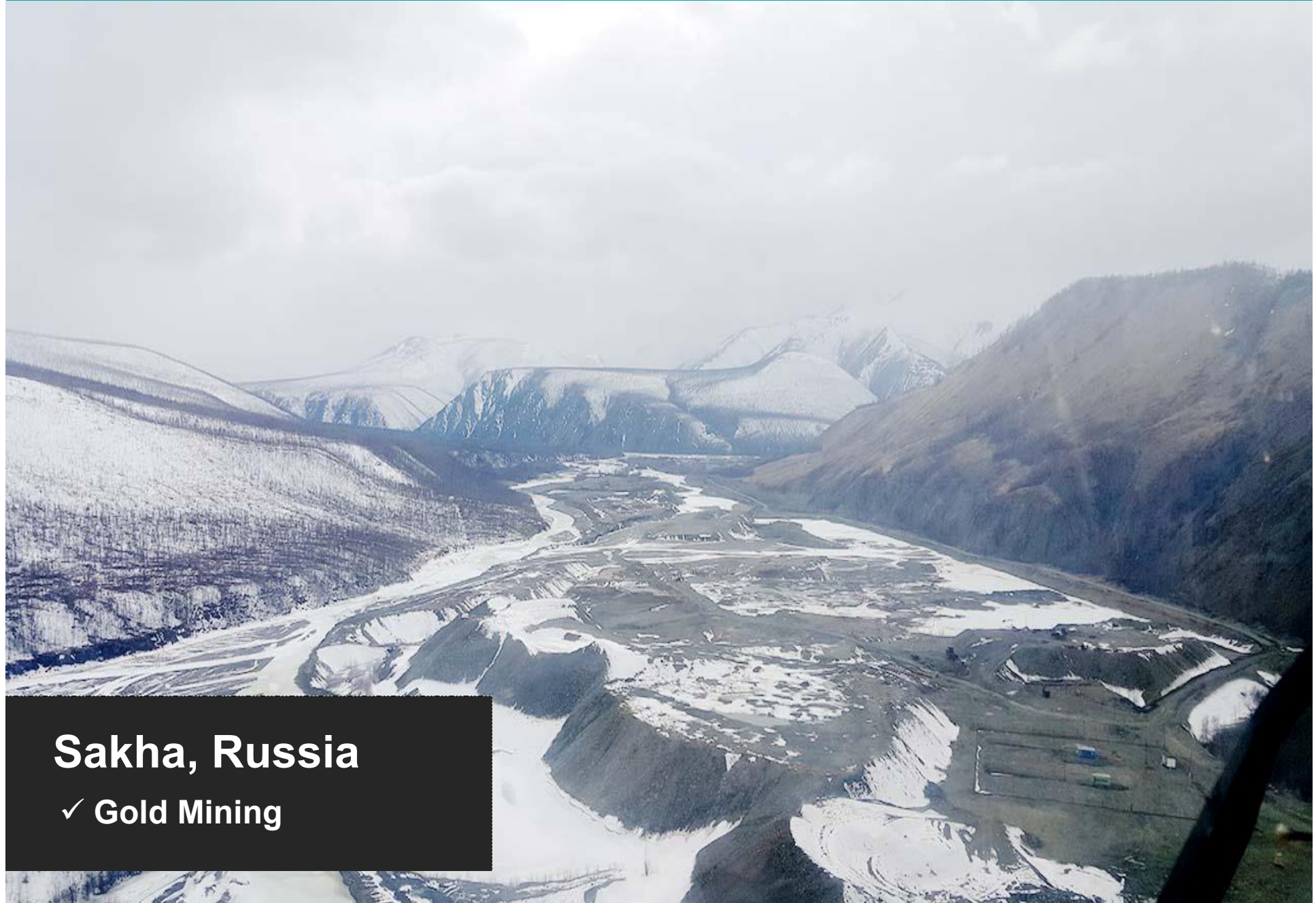
D700

EVERDIGM DTH DRILL RIGS
REFERENCE



Reference for D700

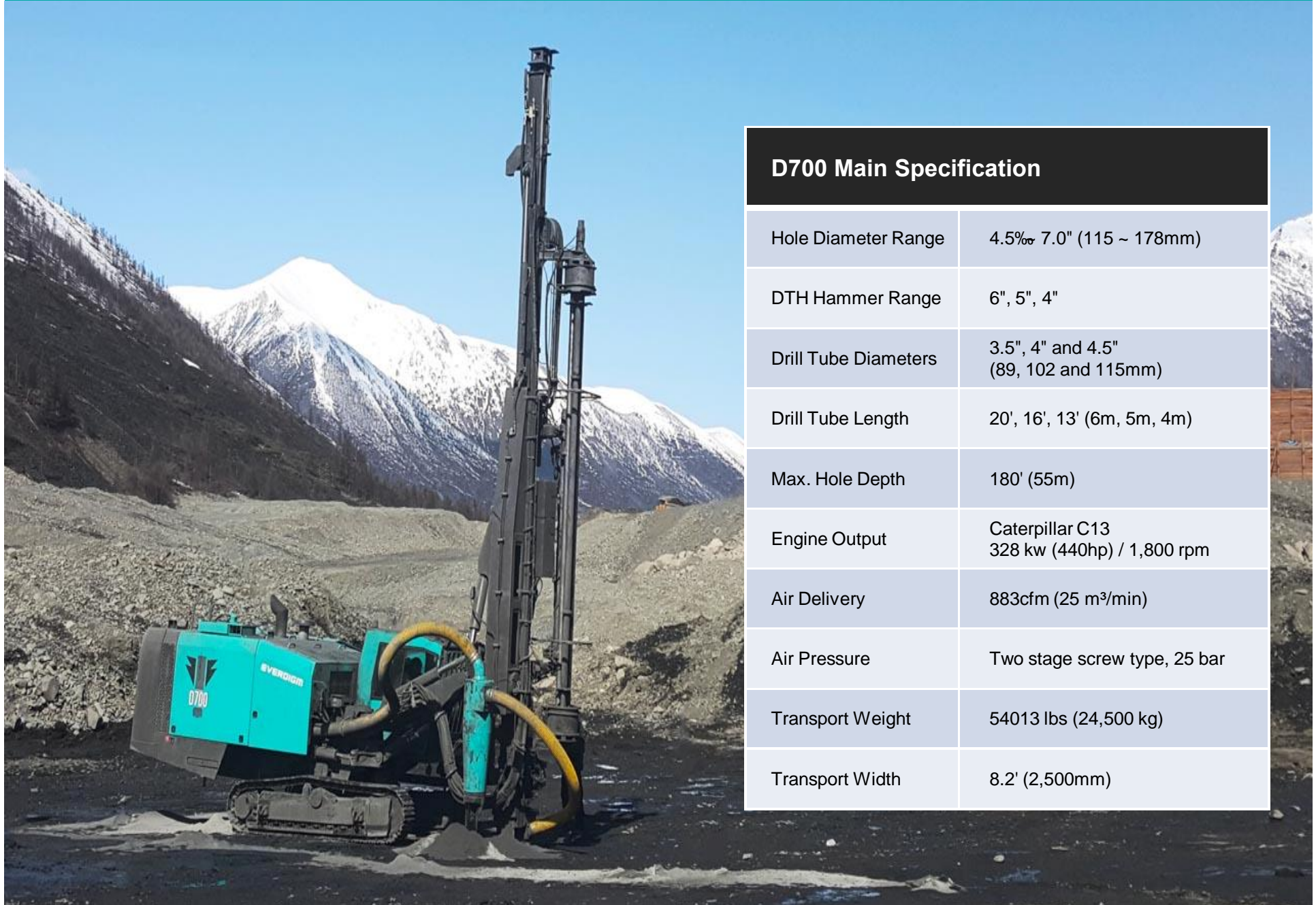
EVERDIGM



Sakha, Russia

✓ Gold Mining

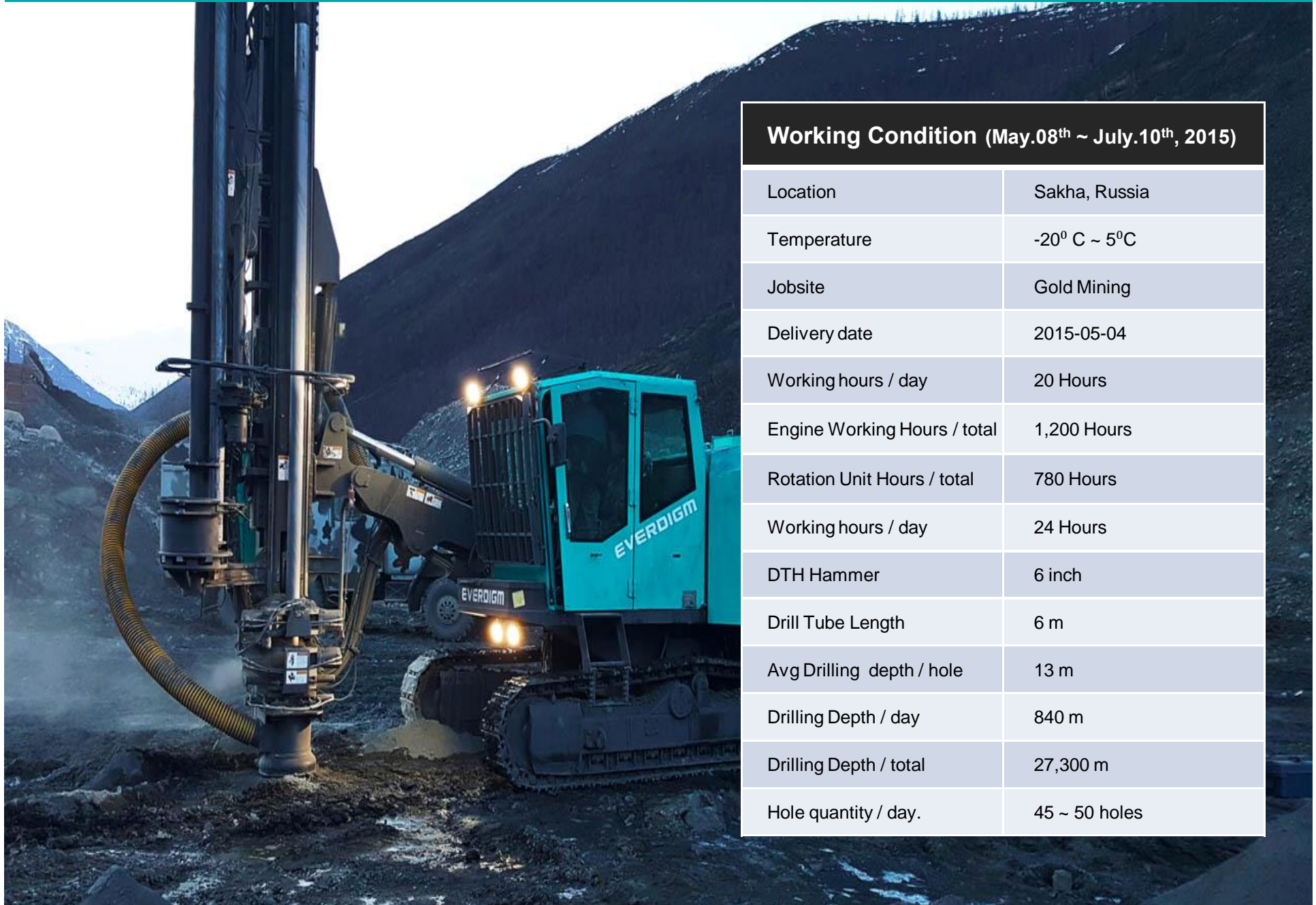
Reference for D700



D700 Main Specification

Hole Diameter Range	4.5" to 7.0" (115 ~ 178mm)
DTH Hammer Range	6", 5", 4"
Drill Tube Diameters	3.5", 4" and 4.5" (89, 102 and 115mm)
Drill Tube Length	20', 16', 13' (6m, 5m, 4m)
Max. Hole Depth	180' (55m)
Engine Output	Caterpillar C13 328 kw (440hp) / 1,800 rpm
Air Delivery	883cfm (25 m ³ /min)
Air Pressure	Two stage screw type, 25 bar
Transport Weight	54013 lbs (24,500 kg)
Transport Width	8.2' (2,500mm)

Reference for D700



Working Condition (May.08 th ~ July.10 th , 2015)	
Location	Sakha, Russia
Temperature	-20° C ~ 5° C
Jobsite	Gold Mining
Delivery date	2015-05-04
Working hours / day	20 Hours
Engine Working Hours / total	1,200 Hours
Rotation Unit Hours / total	780 Hours
Working hours / day	24 Hours
DTH Hammer	6 inch
Drill Tube Length	6 m
Avg Drilling depth / hole	13 m
Drilling Depth / day	840 m
Drilling Depth / total	27,300 m
Hole quantity / day.	45 ~ 50 holes

Reference for D700

EVERDIGM



✓ Hole diameter 6 inch



Reference for D700

EVERDIGM

✓ Hole depth per day : 600 m

✓ Hole quantity per day : 46 holes



EVERDIGM's new D700 DTH drill model has the highest drilling power among equivalent models.

It has simple structure so we expect easy maintenance. Spare parts are available, service is fast and people are very supportive. So we can focus on drilling only.

I already signed two more rigs after two weeks test.



A person wearing a white dress shirt and a blue tie is shown from the chest up. Their right hand is extended, with the index finger pointing towards a glowing, circular power button icon. The icon is white with a power symbol inside a circle, surrounded by a soft, glowing aura. The background is a blurred, light blue and white, suggesting an office or professional setting.

Thank You

New Paradigm for Mining Machinery