

# Sales Guide Crawler Drill

ECD50E

---

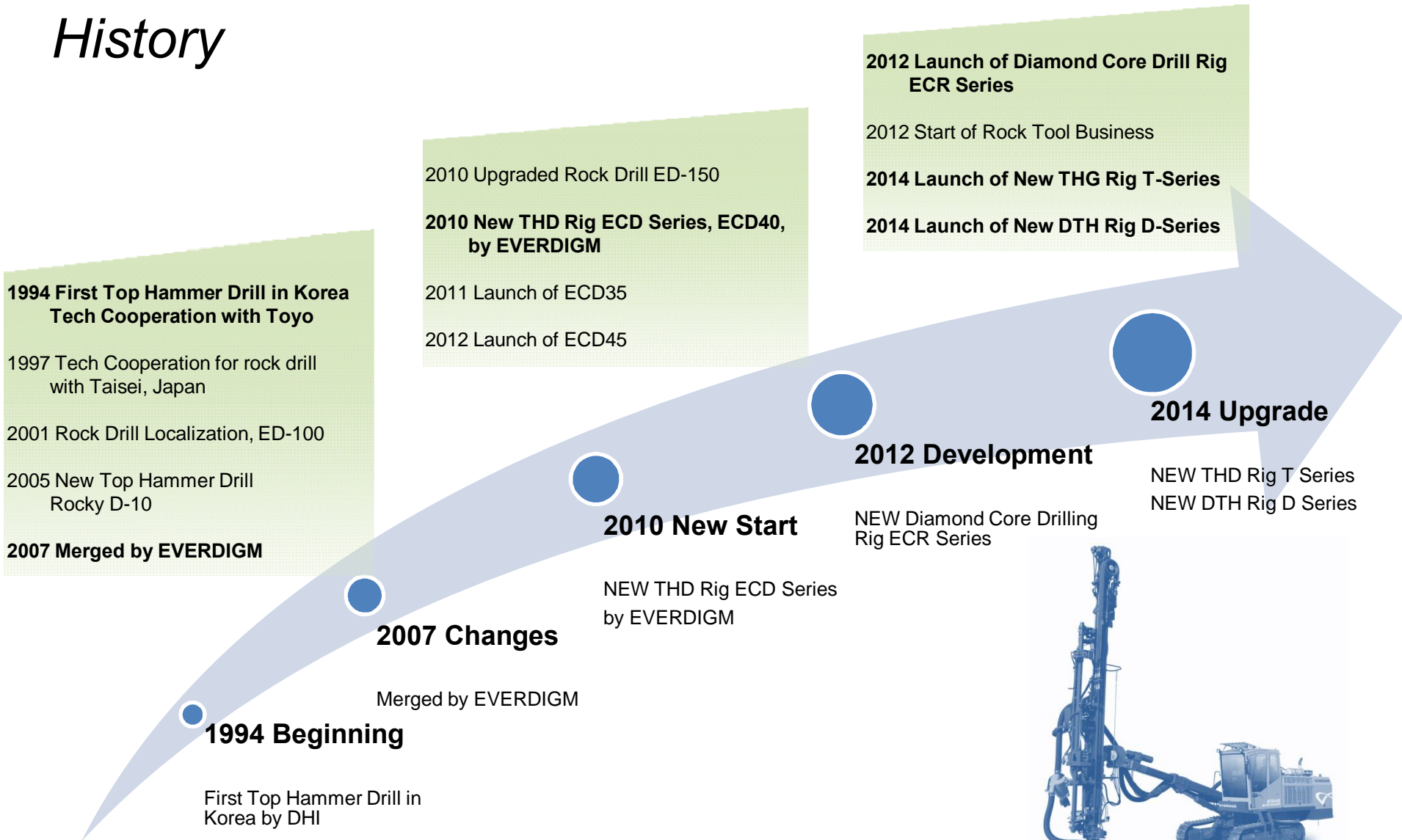
**EVERDIGM**

## *Table of Contents*

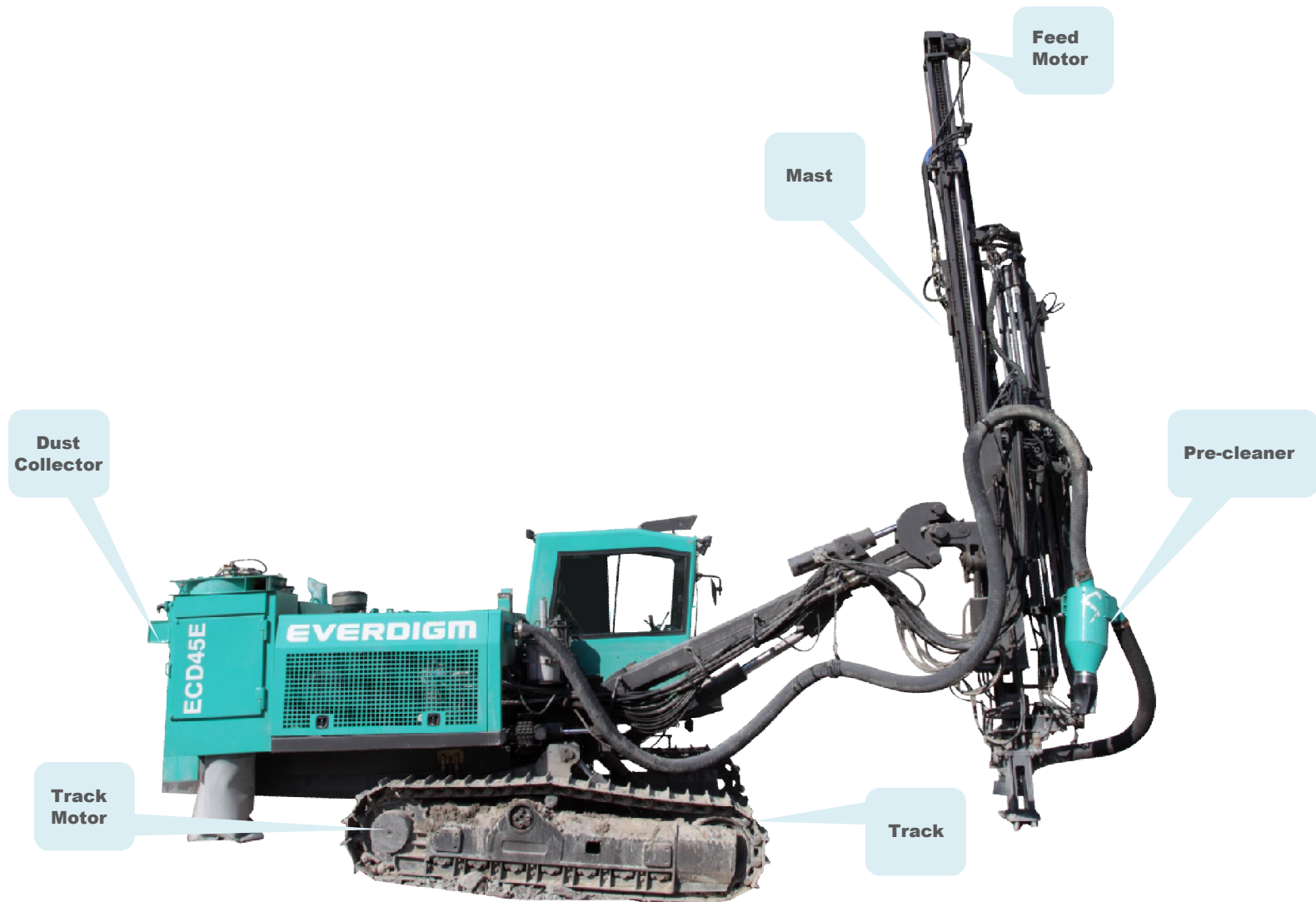
- 01\_History
- 02\_Tech information & Features
- 03\_R&D Capability
- 04\_Marketing & Promotion
- 05\_Customer Service
- 06\_Comments from Customer
- 07\_Sales References



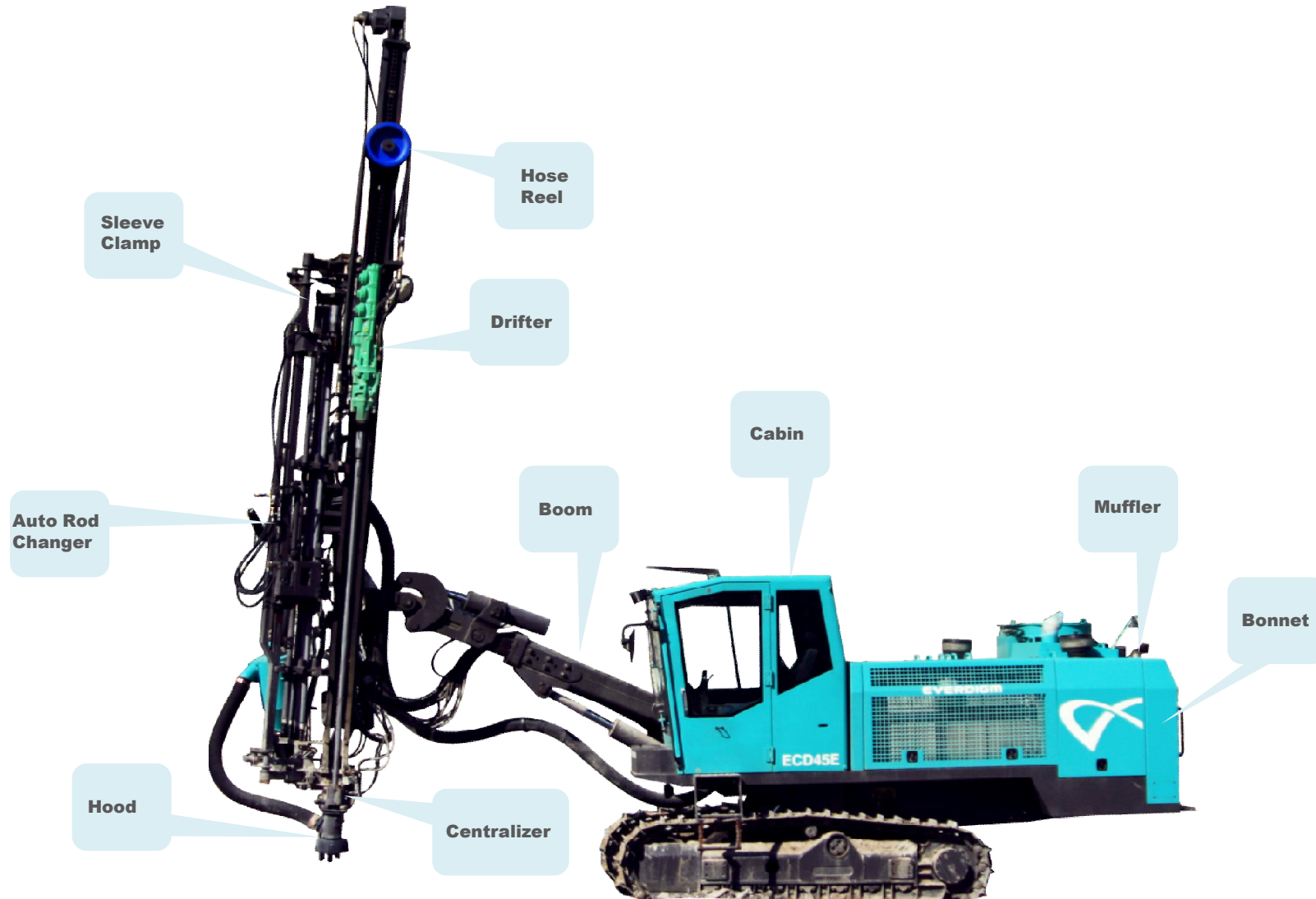
# History



# Overall Machine Structure

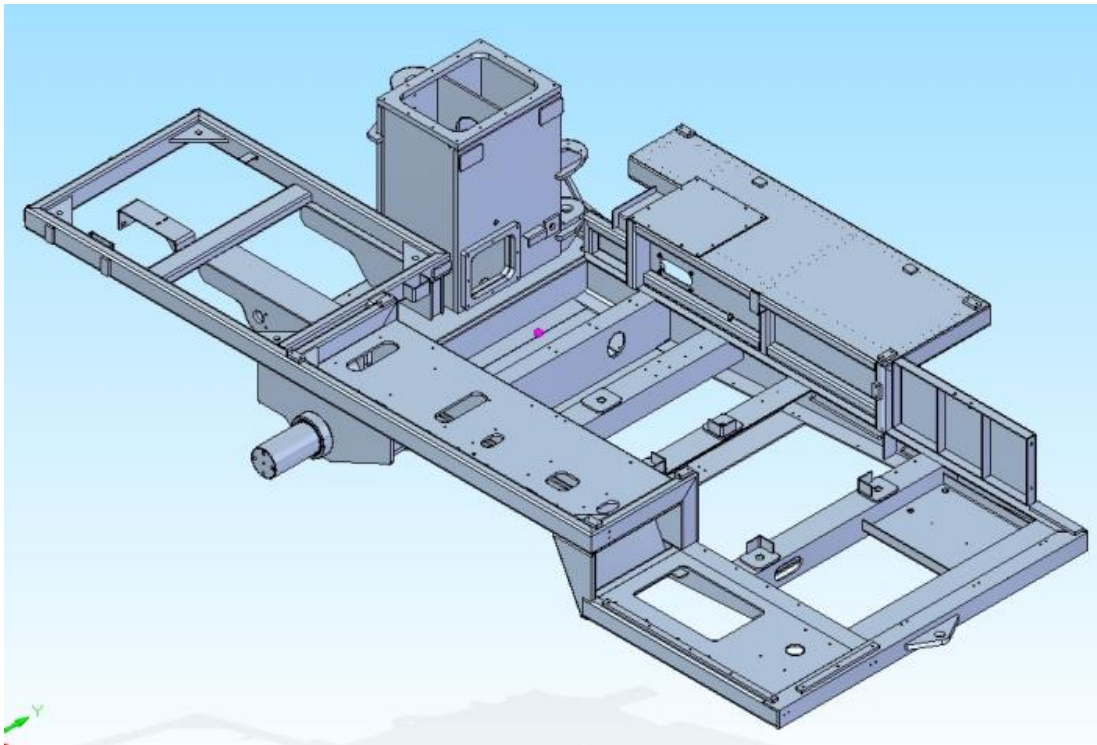


# Overall Machine Structure



# Features

## Frame



- Rigid Frame Structure
- Designed for ruggedness
- Computer Aided Design
- Built to work as counterweight to machine front where boom and mast is attached

# Features

## Cabin



Wide Upper Window for better view



less used switches & indicators / CD Player



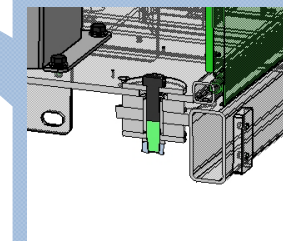
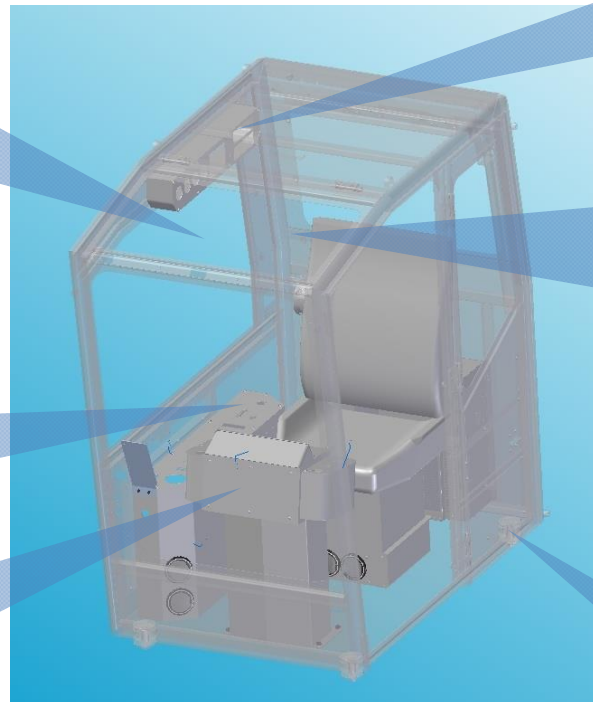
Column integrated ventilation hole for effective air conditioning



Visual & intuitive lever array



Simple & straightforward



4 rubber dampers for operator comfort

# Features

## Track



- 550 mm ground clearance allows easier movement on difficult and dangerous ground condition.
- Oscillation angle of 22° (F11° / R11°)

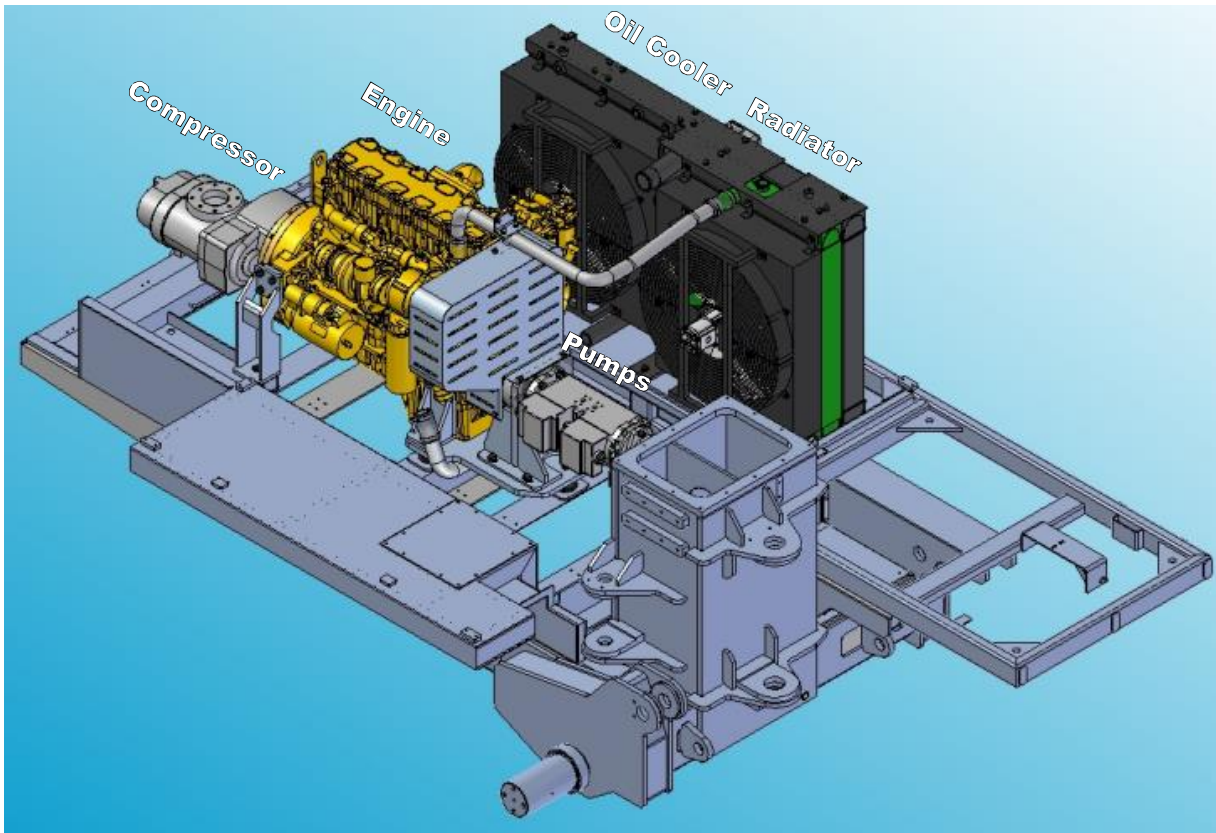


- In-house design and production
- Imported High Rigidity Shoe Plates
- Rugged and proven from the field
- Towing hooks as standard for easier transportation
- Slant angle on track body makes less contamination with dirt



# Features

## Optimized Layout



### Direct connection of pumps and comp to Engine

- Less fuel consumption.
- Less noise
- Increased efficiency of power transfer
- Simple internal layout

### High cooling capacity for radiator and oil cooler

- 27 inch radiator & oil cooler fan
- Cooling module is designed for effective heat ventilation.

### Safety cover for fan belt in engine

### In-lined main parts

- Attribute optimal weight distribution for sound machine movement

# Features

## Main Components



### Compressor

Large capacity air compressor with high output helps to obtain an excellent boring effect and decrease bit wear as discharging dust promptly.



### ARC(Auto Rod Changer)

Rods can be exchanged by a simple operation

# Features



## Main Components

### Engine

Equipped with environment friendly Tier 3 Caterpillar C7 engine. It also provides low fuel consumption. In addition, operator is less exposed from engine noise and vibrations due to direct connection of engine, compressor and pump. Upon request Cummins 6CTAA8.3C(Tier II) engine is also available.



### Pump

Equipped with the 2 stage piston pump and the 2 stage gear pump, it has been improved the work performance with the sufficient flux. The engine, pump and compressor are connected directly to maximize power transmission

# Features

## Main Components



### Pre-cleaner

-Lengthens the life of the filter in the dust collector by primarily intercepting the large fragments toward the dust collector.



### Drifter Lubricating device

The large-volume lubricating oil tank allow you to easily control the volume of oil which flows to the drifter.



### Dust Collector

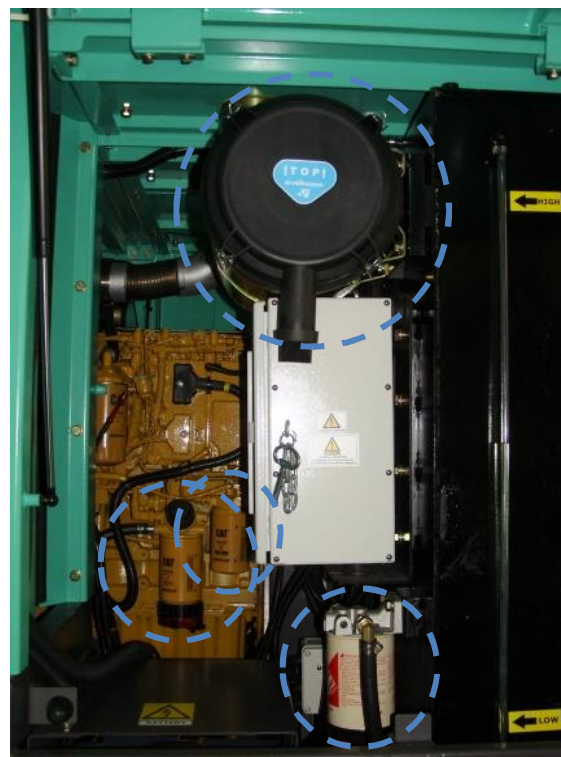
With the six built-in filters, the interval and time of pulse is controllable and therefore the dust collecting capability has been improved.

# Features

## Serviceability

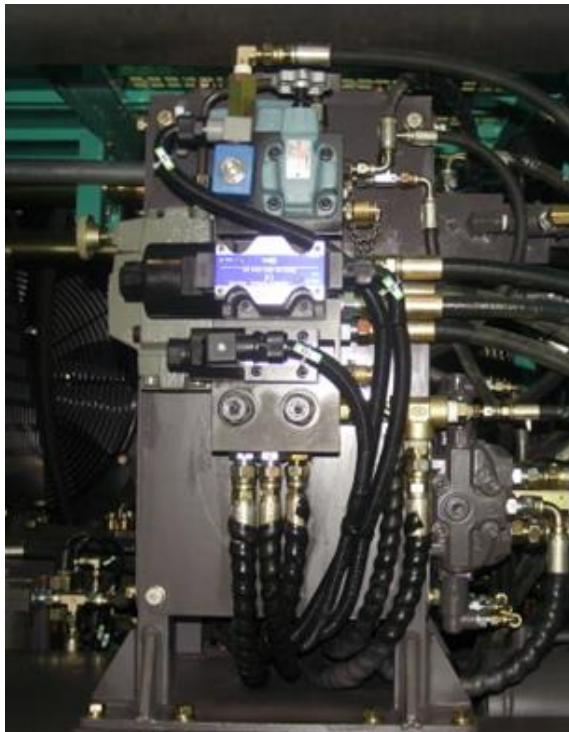


Engine and oil filters are in hand-reaching distance for better serviceability.

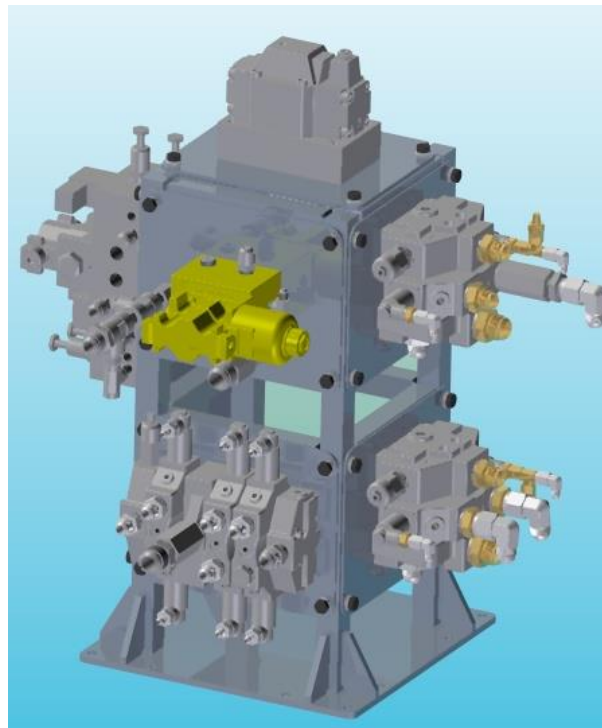


Bonnet is designed to cope with major overhaul such as main components change with detachable panels.

## Features



## Serviceability



### Valve Tower

-Compact and centralized tower makes easier test

-Easy check with extra pressure test port

# Features

## Serviceability

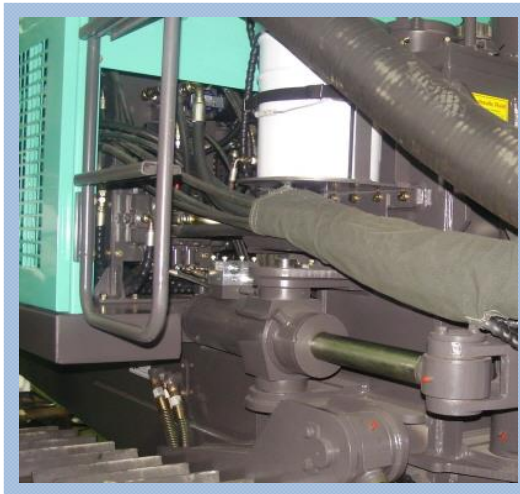


### Unique Hose Terminal

- Minimize the hose interference
- Convenient hose replacement
- Good durability of hose connector

### ARC(Auto Rod Changer) block on mast

- Easy maintenance



### Simple Hydraulic hose connection from main body to mast

- Easy maintenance
- No more messy hoses
- Less chance of hose rupture from abrasion

# Features



**Extra high capacity water separator**  
 Extends engine lifetime with less chance of fuel contamination.



- When the water filled up on water separator, indicator in side of cabin gives signal for drain.

# Serviceability

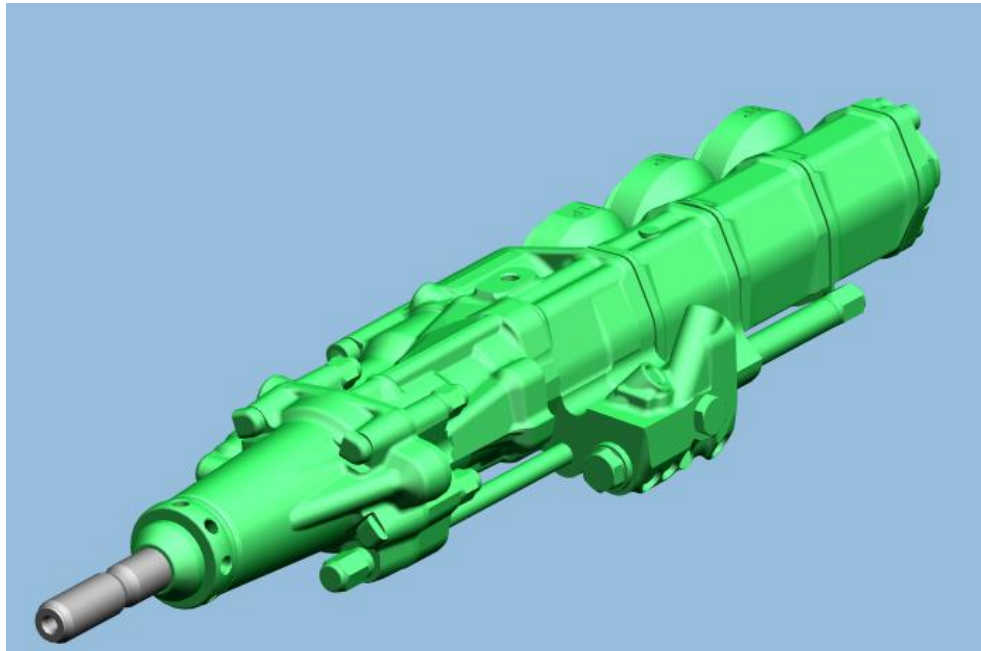


**Main Control Panel**  
 - Fuse connection can be seen from control cover.  
 - No more hassle with computer ization  
 - Use of high capacity relay



# Rock Drill

## HC150-RP by Montabert



### Feature

#### Progressive Blow Energy

- better transmission of energy at the couplings
- minimum stress into the drilling rods
- better bit penetration

#### Hydraulic Dampening System

- optimum shock wave transmission
- protection of the drifter and tools
- reduced vibrations

#### Energy Recovery Valve

- better efficiency
- no internal peak of pressure source of cavitations
- best drifter protection

#### Hydraulic Reverse Percussion

- tool extraction in fractured ground
- no rods left in the hole.

# Features

## Anti-Jamming (Automatic drifter backward with resistance)



When the rotation is stuck, HYD. Pressure reach 110 bar, then this sensor gives signal to feed motor



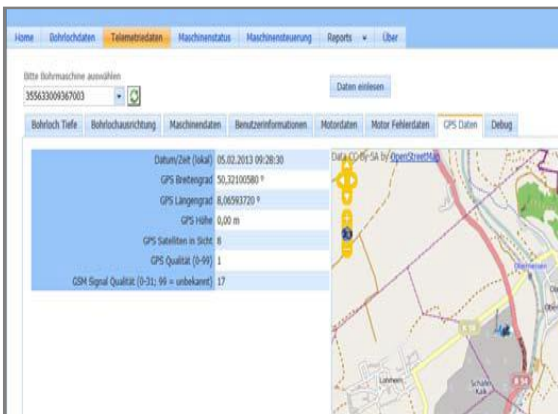
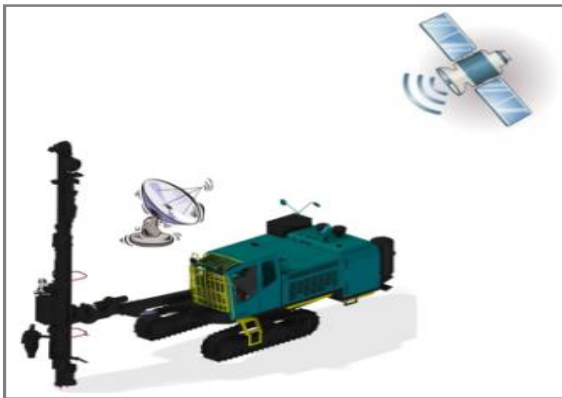
When the air hole of bit is blocked, air pressure reach 9.5 bar, then this sensor gives signal to feed motor



Drifter immediately move back upon getting one of both signal. When the pressure goes back to normal drifter moves forward.

# Features

# Options



**. Drilling Support System – GPS, GSM**



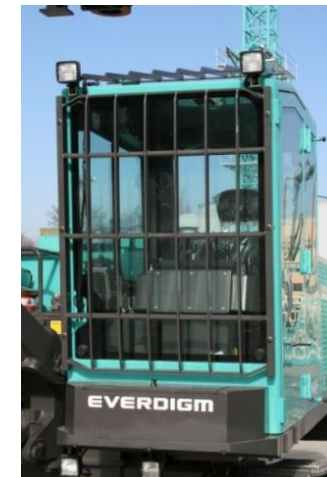
**Water Spray System**



**Engine Preheating System**



**Centralized Auto Greasing System**



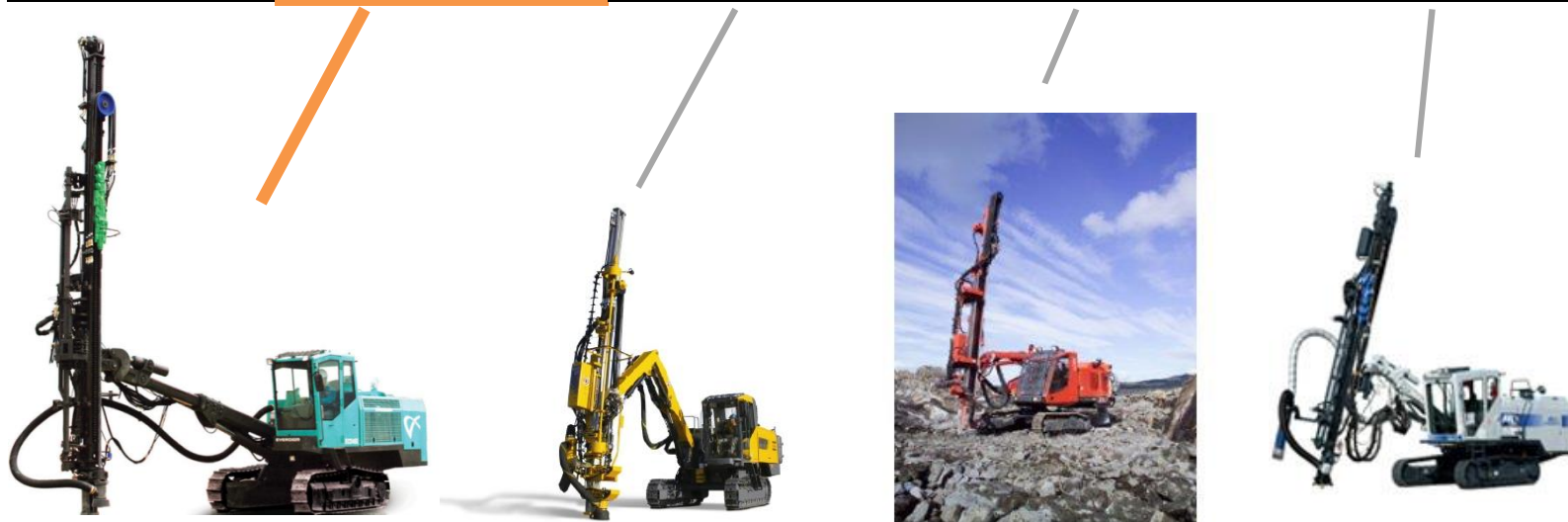
**Cabin Guard**

## Technical Specification

Model	ECD50E(Std)
BIT DIAMETER	3"~ 5" (75mm~127mm)
ROD SIZE	T51, T45( Option)
ROD LENGTH	12' (3,660mm)
HOLE DEPTH	72' (22,000mm)
WEIGHT	30,860 lbs (14,000kg)
DRIFTER MODEL	HC150RP
DRIFTER IMPACT POWER, MAX	21kw
ENGINE MODEL	CATERPILLAR C7 / CUMMINS 6CTAA8.3C
ENGINE OUTPUT	250hp - 2,200rpm / 260hp-2,200rpm
FUEL TANK CAPACITY	400 ℓ
FREE AIR DELIVERY	11 m <sup>3</sup> /min
AIR PRESSURE	149 lbs/in <sup>2</sup> (10.5 kg/cm <sup>2</sup> )
BOOM TYPE	EXTENSION BOOM
BOOM LENGTH	10.2' / 14.1'(3,100mm / 4,300mm)
DUST COLLECTOR SUCTION CAPACITY	847cfm (24 m <sup>3</sup> /min)
PRE-CLEANER	STANDARD
NUMBER OF RODS ON ROD CHANGER	5+1
CABIN	AIR CONDITIONER, HEATER, ROPS& FOPS CERTIFIED

# Specification Comparison

Sort	EVERDIGM ECD50	Atlas Copco Flexi ROC T45	Sandvik DX800	Furukawa HCR-1500
Engine	CAT C7(Tier III) 250HP	Caterpillar C9 325HP@1,900rpm	Caterpillar C7 250HP@rpm	Caterpillar C9 348HP@2,200rpm
Compressor	11m <sup>3</sup> /min 10.5bar	13.4m <sup>3</sup> /min 12bar	9.6m <sup>3</sup> /min 10bar	13.5m <sup>3</sup> /min 10.3bar
Rock Drill	HC150RP(Montabert) 21kW EHD201(EVERDIGM) 21kW(option)	COP2560 25Kw	HL810T 21Kw	HD715II 21 ~ 23kW
Hole Size Drill Depth	5 (127) 22m	5.5 (140) 25m	5 (127) 25m	5 (127)



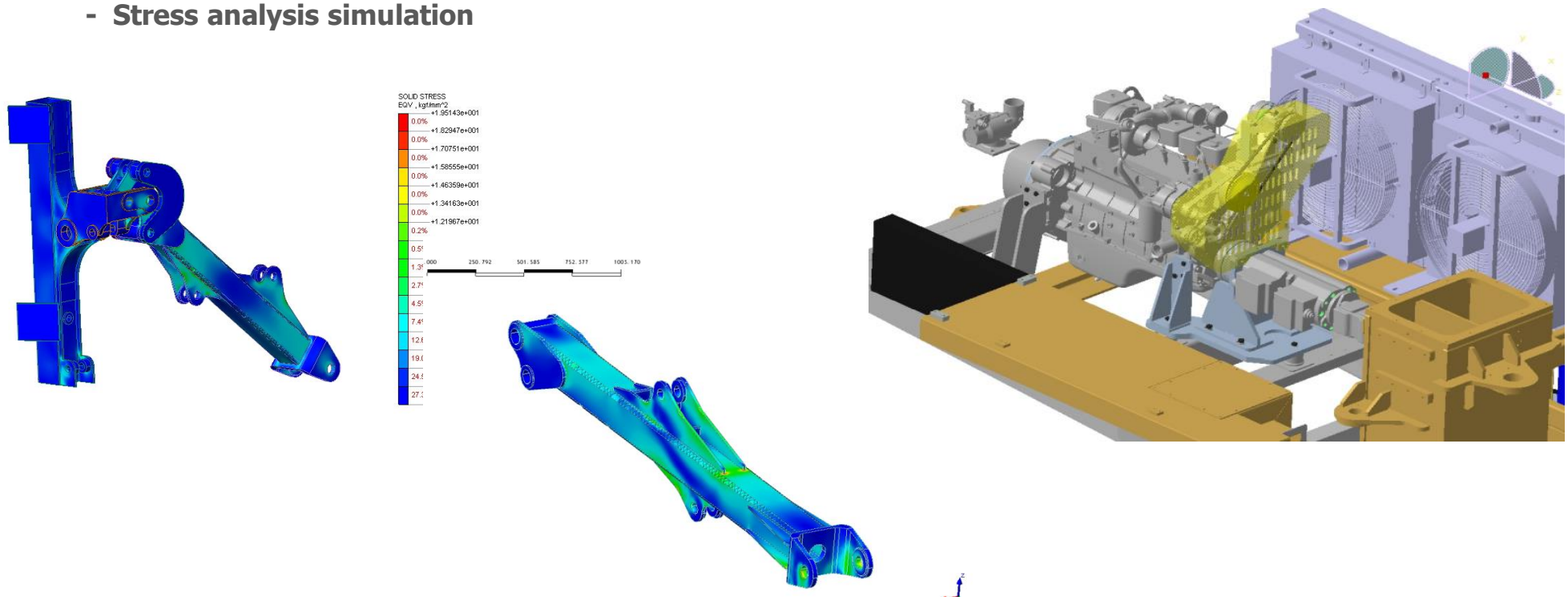
## Customer Service

- Customized Education Program based on the level of customer
- Fast response and customer oriented attitude.
- Giving practical solution working with major components company.
- Professional technicians and engineers with foreign language and drilling terminology.

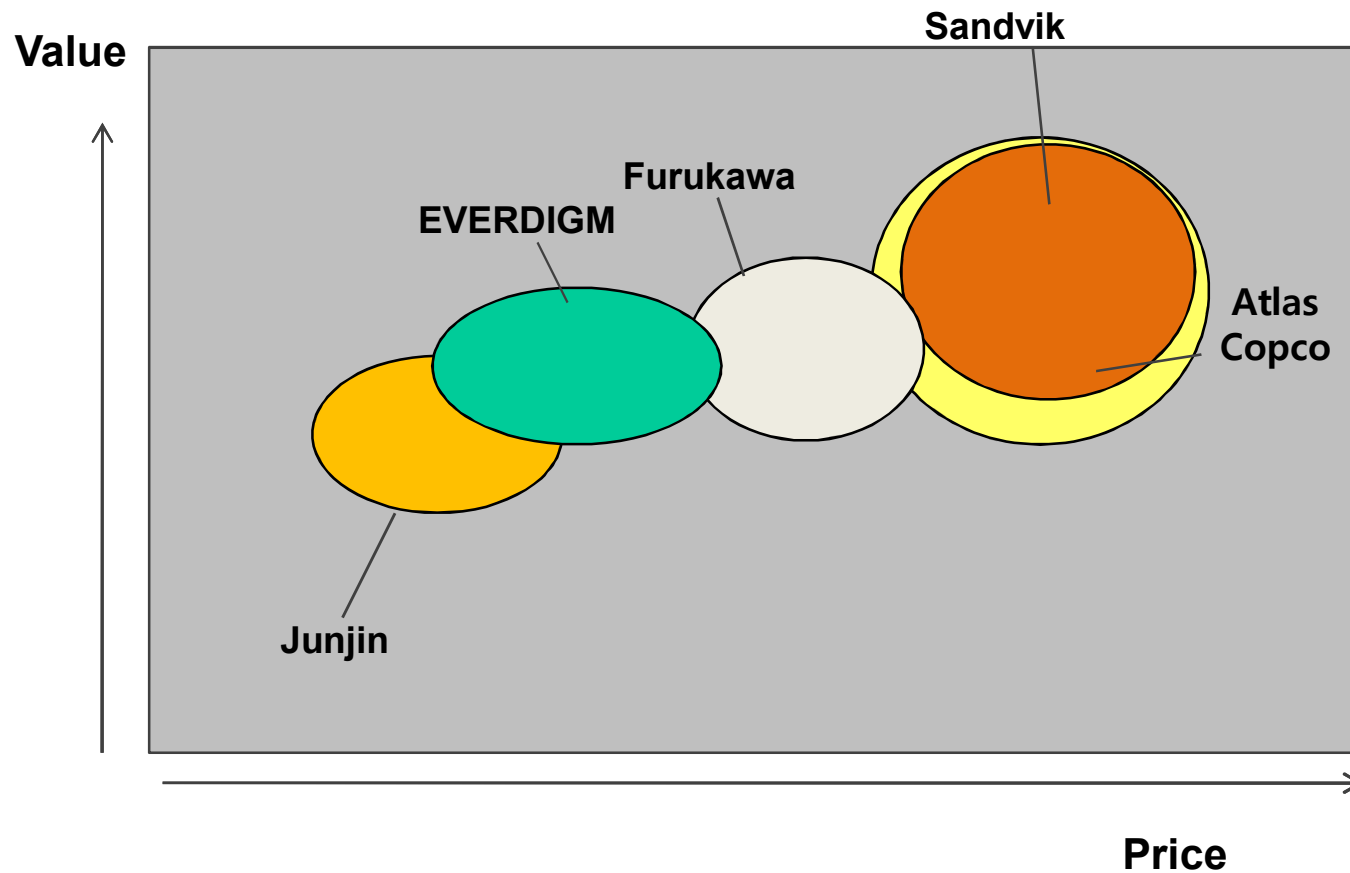


## R&D Capability

- Developing the Product Life cycle Management(PLM) system based on such as 3D design.
- 15 people for R&D center
- Repeated simulation from design to production to reduce product design failure.
- Utilizing highest level of quality control and manufacturing process
- Stress analysis simulation



# Marketing Positioning



- “ Low Initial Investment
- “ Good Drilling Performance
- “ Economical Operating Cost
- “ Top Brand from Korea
- “ Alternatives for Global Top Brand



# Marketing & Promotion



Bauma China 2010- Shanghai



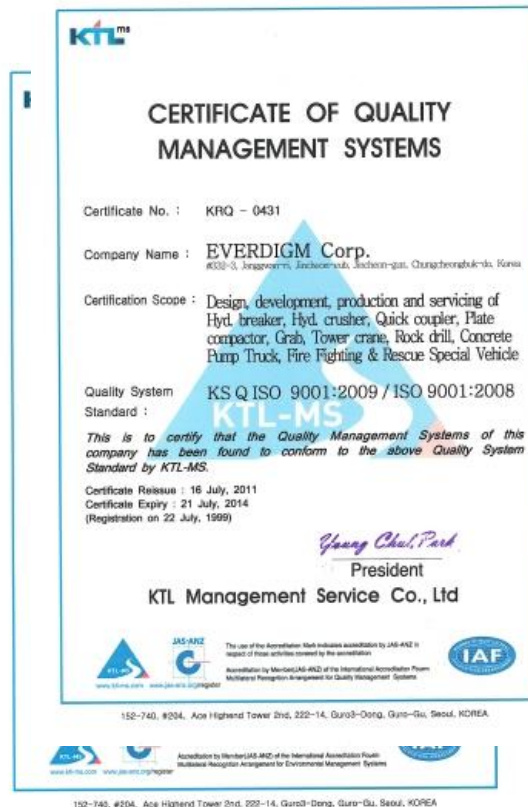
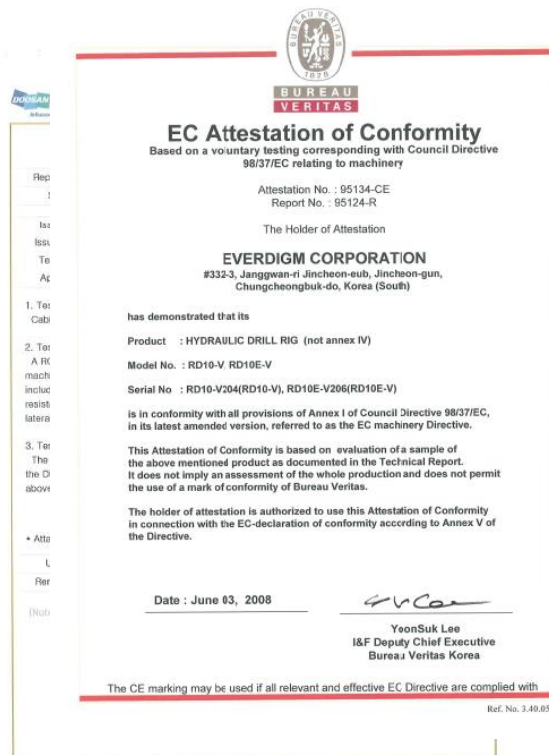
Bauma 2010 –Germany



Intermat 2012 - Paris

# Certification

- Obtained certificates : ROPS, FOPS, CE, GOST, RTN, ISO 9001, 14001, PL (Product Liability) Insured with worldwide coverage



## Comments from Customer

**“ EVERDIGM has consistently provided excellent support to us. They are fast in tech question and service people are well-qualified.”**

**-Mr. Bora OYGUR ; Product Manager in ERKOM KOMPRSSOR in Turkey**



## *Sales Reference*





**Build the Future**