



Down The Hole Hammer & Bit



CONTENTS

| | |
|---------------------------------------|-------|
| 1.DTH Hammers with foot valve | 2-19 |
| 2.DTH Hammers without foot valve..... | 20-47 |
| 3.Big Hole DTH Hammers..... | 48-51 |
| 4.DTH Bits..... | 52-64 |
| 5.The others..... | 65-72 |
| 6.Contact us..... | 73 |

The Characteristics Of High Air Pressure DTH Hammer -with foot valve

It is a kind of valveless high air pressure DTH Hammer with foot valve

It has the following characteristics:

- ◆ Valveless air distribution. More reliable.
- ◆ Simple design of the piston, long life.
- ◆ More efficient energy transfer, faster drilling speed,
lower air consumption and lower oil consumption.
- ◆ Fewer internal parts, simple structure, longer life,
Less failure and easier to maintain because all the parts are heat treated.
- ◆ Easy to disassemble because the top sub, the drive chuck and the
external cylinder are connected by multistep thread .

Explanation of High Air Pressure DTH Hammer -With Foot Valve Code

Example One:MD55

M— Maxdrill (Our company name)

D—DHD Bit Shank

5—5"hammer

5—The Fifth Generation Hammer

Example Two:MQL4

M— Maxdrill (Our company name)

QL4—QL40 Bit Shank

MD35 DTH HAMMER

High Air Pressure with foot valve DTH Hammers



| | Item Description | Weight (Kg) | Part Number |
|----|-----------------------|-------------|-------------|
| 1 | Top Sub | 4.20 | MD3501 |
| 2 | "O" Ring of Top Sub | 0.01 | MD3502 |
| 3 | Check Valve | 0.20 | MD3503 |
| 4 | Spring | 0.02 | MD3504 |
| 5 | Compression Buffer | 0.02 | MD3505 |
| 6 | Air Distributor | 1.40 | MD3506 |
| 7 | Internal Cylinder | 1.50 | MD3507 |
| 8 | Piston | 5.60 | MD3508 |
| 9 | Guided Sleeve | 9.90 | MD3509 |
| 10 | "O" Ring of Stop Ring | 0.01 | MD3510 |
| 11 | Stop Ring | 0.15 | MD3511 |
| 12 | Drive Chuck | 1.90 | MD3512 |
| 13 | Drill Bit | | MD3513 |

Technical Date

| Length(Less bit) | Weight(Less bit) | External diameter | Bit Shank | Hole Range | Connection Thread |
|------------------|-----------------------|----------------------------|------------------------|------------------------|-------------------|
| 930mm | 25.00Kg | Ø82mm | DHD3.5 | Ø90-Ø110 | API 2 3/8" Reg |
| Working Pressure | Impact rate at 1.7Mpa | Recommended rotation speed | Air Consumption | | |
| | | | 1.0Map | 1.5Mpa | |
| 1.0-1.5Mpa | 28HZ | 25-40r/min | 4.5m ³ /min | 9.0m ³ /min | |

MD45 DTH HAMMER

High Air Pressure with foot valve DTH Hammers



| | Item Description | Weight (Kg) | Part Number |
|----|-----------------------|-------------|-------------|
| 1 | Top Sub | 6.50 | MD4501 |
| 2 | "O" Ring of Top Sub | 0.01 | MD4502 |
| 3 | Check Valve | 0.42 | MD4503 |
| 4 | Spring | 0.04 | MD4504 |
| 5 | Compression Buffer | 0.04 | MD4505 |
| 6 | Air Distributor | 2.20 | MD4506 |
| 7 | Internal Cylinder | 2.30 | MD4507 |
| 8 | Piston | 9.00 | MD4508 |
| 9 | External Cylinder | 15.00 | MD4509 |
| 10 | "O" Ring of Stop Ring | 0.01 | MD4510 |
| 11 | Stop Ring | 0.20 | MD4511 |
| 12 | Drive Chuck | 3.50 | MD4512 |
| 13 | Drill Bit | | MD4513 |

According to your request, the top sub can be made into two spanners, and put protection buttons. An air controlling hole can be drilled on the check valve to provide more efficient cuttings discharge.

Technical Date

| Length(Less bit) | Weight(Less bit) | External diameter | Bit Shank | Hole Range | Connection Thread |
|------------------|-----------------------|----------------------------|----------------------|-----------------------|-----------------------|
| 1030mm | 39.00Kg | ø99mm | Cop44 DHD340 | ø110-ø135 | API 2 3/8" Reg |
| Working Pressure | Impact rate at 1.7Mpa | Recommended rotation speed | Air Consumption | | |
| | | | 1.0Map | 1.8Mpa | 2.4Mpa |
| 1.0-2.5Mpa | 27HZ | 25-40r/min | 6m ³ /min | 10m ³ /min | 15m ³ /min |

MSD4 DTH HAMMER

High Air Pressure with foot valve DTH Hammers



| | Item Description | Weight (Kg) | Part Number |
|----|-----------------------|-------------|-------------|
| 1 | Top Sub | 6.50 | MSD401 |
| 2 | "O" Ring of Top Sub | 0.01 | MSD402 |
| 3 | Check Valve | 0.42 | MSD403 |
| 4 | Spring | 0.04 | MSD404 |
| 5 | Compression Buffer | 0.04 | MSD405 |
| 6 | Air Distributor | 2.20 | MSD406 |
| 7 | Internal Cylinder | 2.50 | MSD407 |
| 8 | Piston | 9.00 | MSD408 |
| 9 | External Cylinder | 15.60 | MSD409 |
| 10 | "O" Ring of Stop Ring | 0.02 | MSD410 |
| 11 | Stop Ring | 0.20 | MSD411 |
| 12 | Drive Chuck | 4.00 | MSD412 |
| 13 | Drill Bit | | MSD413 |

According to your request, the top sub can be made into two spanners, and put protection buttons. An air controlling hole can be drilled on the check valve to provide more efficient cuttings discharge.

Technical Date

| Length(Less bit) | Weight(Less bit) | External diameter | Bit Shank | Hole Range | Connection Thread |
|------------------|-----------------------|----------------------------|----------------------|-----------------------|-----------------------|
| 1084mm | 40.50Kg | ø99mm | SD4 | ø110-ø135 | API 2 3/8" Reg |
| Working Pressure | Impact rate at 1.7Mpa | Recommended rotation speed | Air Consumption | | |
| | | | 1.0Map | 1.8Mpa | 2.4Mpa |
| 1.0-2.5Mpa | 27HZ | 25-40r/min | 6m ³ /min | 10m ³ /min | 15m ³ /min |

MQL4 DTH HAMMER

High Air Pressure with foot valve DTH Hammers



| Item Description | Weight (Kg) | Part Number |
|--------------------------|-------------|-------------|
| 1 Top Sub | 6.50 | MQL401 |
| 2 "O" Ring of Top Sub | 0.01 | MQL402 |
| 3 Check Valve | 0.42 | MQL403 |
| 4 Spring | 0.04 | MQL404 |
| 5 Compression Buffer | 0.04 | MQL405 |
| 6 Air Distributor | 2.20 | MQL406 |
| 7 Internal Cylinder | 2.30 | MQL407 |
| 8 Piston | 8.80 | MQL408 |
| 9 External Cylinder | 16.50 | MQL409 |
| 10 Guided Sleeve | 0.80 | MQL410 |
| 11 "O" Ring of Stop Ring | 0.01 | MQL411 |
| 12 Stop Ring | 0.30 | MQL412 |
| 13 Drive Chuck | 3.00 | MQL413 |
| 14 Drill Bit | | MQL414 |

According to your request, the top sub can be made into two spanners, and put protection buttons. An air controlling hole can be drilled on the check valve to provide more efficient cuttings discharge.

Technical Date

| Length(Less bit) | Weight(Less bit) | External diameter | Bit Shank | Hole Range | Connection Thread |
|------------------|-----------------------|----------------------------|----------------------|-----------------------|-----------------------|
| 1097mm | 41.00Kg | ø99mm | QL40 | ø110-ø135 | API 2 3/8" Reg |
| Working Pressure | Impact rate at 1.7Mpa | Recommended rotation speed | Air Consumption | | |
| | | | 1.0Map | 1.8Mpa | 2.4Mpa |
| 1.0-2.5Mpa | 27HZ | 25-40r/min | 6m ³ /min | 10m ³ /min | 15m ³ /min |

MD55 DTH HAMMER

High Air Pressure with foot valve DTH Hammers



| Item Description | Weight (Kg) | Part Number |
|--------------------------|-------------|-------------|
| 1 Top Sub | 15.00 | MD5501 |
| 2 "O" Ring of Top Sub | 0.01 | MD5502 |
| 3 Check Valve | 1.00 | MD5503 |
| 4 Spring | 0.04 | MD5504 |
| 5 Compression Buffer | 0.06 | MD5505 |
| 6 Air Distributor | 3.70 | MD5506 |
| 7 Internal Cylinder | 4.50 | MD5507 |
| 8 Piston | 15.50 | MD5508 |
| 9 External Cylinder | 30.00 | MD5509 |
| 10 "O" Ring of Stop Ring | 0.01 | MD5510 |
| 11 Stop Ring | 0.30 | MD5511 |
| 12 Drive Chuck | 6.40 | MD5512 |
| 13 Drill Bit | | MD5513 |

According to your request, the top sub can be made into two spanners, and put protection buttons. An air controlling hole can be drilled on the check valve to provide more efficient cuttings discharge.

Technical Date

| Length(Less bit) | Weight(Less bit) | External diameter | Bit Shank | Hole Range | Connection Thread |
|------------------|-----------------------|----------------------------|----------------------|-----------------------|----------------------------------|
| 1214mm | 76.50Kg | ø125mm | Cop54 DHD350R | ø135-ø155 | API 2 3/8" Reg API 3 1/2" Reg |
| Working Pressure | Impact rate at 1.7Mpa | Recommended rotation speed | Air Consumption | | |
| | | | 1.0Map | 1.8Mpa | 2.4Mpa |
| 1.0-2.5Mpa | 25HZ | 20-35r/min | 9m ³ /min | 15m ³ /min | 23m ³ /min |

MSD5 DTH HAMMER

High Air Pressure with foot valve DTH Hammers



| | Item Description | Weight (Kg) | Part Number |
|----|-----------------------|-------------|-------------|
| 1 | Top Sub | 15.00 | MSD501 |
| 2 | "O" Ring of Top Sub | 0.01 | MSD502 |
| 3 | Check Valve | 1.00 | MSD503 |
| 4 | Spring | 0.10 | MSD504 |
| 5 | Compression Buffer | 0.05 | MSD505 |
| 6 | Air Distributor | 3.50 | MSD506 |
| 7 | Internal Cylinder | 4.20 | MSD507 |
| 8 | Piston | 15.50 | MSD508 |
| 9 | External Cylinder | 25.00 | MSD509 |
| 10 | "O" Ring of Stop Ring | 0.01 | MSD510 |
| 11 | Stop Ring | 0.50 | MSD511 |
| 12 | Drive Chuck | 7.50 | MSD512 |
| 13 | Drill Bit | | MSD513 |

According to your request, the top sub can be made into two spanners, and put protection buttons. An air controlling hole can be drilled on the check valve to provide more efficient cuttings discharge.

Technical Date

| Length(Less bit) | Weight(Less bit) | External diameter | Bit Shank | Hole Range | Connection Thread |
|------------------|-----------------------|----------------------------|----------------------|-----------------------|-----------------------|
| 1175mm | 72.50Kg | ø125mm | SD5 | ø135-ø155 | API 3 1/2" Reg |
| Working Pressure | Impact rate at 1.7Mpa | Recommended rotation speed | Air Consumption | | |
| | | | 1.0Map | 1.8Mpa | 2.4Mpa |
| 1.0-2.5Mpa | 25HZ | 20-35r/min | 9m ³ /min | 15m ³ /min | 23m ³ /min |

MQL5 DTH HAMMER

High Air Pressure with foot valve DTH Hammers



| Item Description | Weight (Kg) | Part Number |
|--------------------------|-------------|-------------|
| 1 Top Sub | 15.00 | MQL501 |
| 2 "O" Ring of Top Sub | 0.02 | MQL502 |
| 3 Check Valve | 1.00 | MQL503 |
| 4 Spring | 0.10 | MQL504 |
| 5 Compression Buffer | 0.10 | MQL505 |
| 6 Air Distributor | 3.50 | MQL506 |
| 7 Internal Cylinder | 4.20 | MQL507 |
| 8 Piston | 19.00 | MQL508 |
| 9 External Cylinder | 24.60 | MQL509 |
| 10 Guided Sleeve | 0.90 | MQL510 |
| 11 "O" Ring of Stop Ring | 0.01 | MQL511 |
| 12 Stop Ring | 0.40 | MQL512 |
| 13 Drive Chuck | 4.60 | MQL513 |
| 14 Drill Bit | | MQL514 |

According to your request, the top sub can be made into two spanners, and put protection buttons. An air controlling hole can be drilled on the check valve to provide more efficient cuttings discharge.

Technical Date

| Length(Less bit) | Weight(Less bit) | External diameter | Bit Shank | Hole Range | Connection Thread |
|------------------|-----------------------|----------------------------|----------------------|-----------------------|-----------------------|
| 1156mm | 73.00Kg | ø125mm | QL50 | ø135-ø155 | API 3 1/2" Reg |
| Working Pressure | Impact rate at 1.7Mpa | Recommended rotation speed | Air Consumption | | |
| | | | 1.0Map | 1.8Mpa | 2.4Mpa |
| 1.0-2.5Mpa | 25HZ | 20-30r/min | 9m ³ /min | 15m ³ /min | 23m ³ /min |

MD65 DTH HAMMER

High Air Pressure with foot valve DTH Hammers



| Item Description | Weight (Kg) | Part Number |
|--------------------------|-------------|-------------|
| 1 Top Sub | 20.00 | MD6501 |
| 2 "O" Ring of Top Sub | 0.02 | MD6502 |
| 3 Check Valve | 1.00 | MD6503 |
| 4 Spring | 0.04 | MD6504 |
| 5 Compression Buffer | 0.08 | MD6505 |
| 6 Air Distributor | 5.00 | MD6506 |
| 7 Internal Cylinder | 5.00 | MD6507 |
| 8 Piston | 23.60 | MD6508 |
| 9 External Cylinder | 36.80 | MD6509 |
| 10 Guided Sleeve | 2.40 | MD6510 |
| 11 "O" Ring of Stop Ring | 0.02 | MD6511 |
| 12 Stop Ring | 0.60 | MD6512 |
| 13 Drive Chuck | 6.00 | MD6513 |
| 14 Drill Bit | | MD6514 |

According to your request, the top sub can be made into two spanners, and put protection buttons. An air controlling hole can be drilled on the check valve to provide more efficient cuttings discharge.

Technical Date

| Length(Less bit) | Weight(Less bit) | External diameter | Bit Shank | Hole Range | Connection Thread |
|------------------|-----------------------|----------------------------|-----------------------|-----------------------|-------------------------|
| 1248mm | 100.00Kg | ø142mm | Cop64 DHD360 | ø155-ø190 | API 3 1/2" Reg |
| Working Pressure | Impact rate at 1.7Mpa | Recommended rotation speed | Air Consumption | | |
| | | | 1.0Map | 1.8Mpa | 2.4Mpa |
| 1.0-2.5Mpa | 23HZ | 20-30r/min | 10m ³ /min | 20m ³ /min | 28.5m ³ /min |

MSD6 DTH HAMMER

High Air Pressure with foot valve DTH Hammers



| Item Description | Weight (Kg) | Part Number |
|--------------------------|-------------|-------------|
| 1 Top Sub | 20.00 | MSD601 |
| 2 "O" Ring of Top Sub | 0.01 | MSD602 |
| 3 Check Valve | 1.00 | MSD603 |
| 4 Spring | 0.05 | MSD604 |
| 5 Compression Buffer | 0.10 | MSD605 |
| 6 Air Distributor | 5.00 | MSD606 |
| 7 Internal Cylinder | 5.00 | MSD607 |
| 8 Piston | 24.00 | MSD608 |
| 9 External Cylinder | 35.00 | MSD609 |
| 10 Guided Sleeve | 0.01 | MSD610 |
| 11 "O" Ring of Stop Ring | 0.50 | MSD611 |
| 12 Stop Ring | 1.50 | MSD612 |
| 13 Drive Chuck | 7.50 | MSD613 |
| 14 Drill Bit | | MSD614 |

According to your request, the top sub can be made into two spanners, and put protection buttons. An air controlling hole can be drilled on the check valve to provide more efficient cuttings discharge.

Technical Date

| Length(Less bit) | Weight(Less bit) | External diameter | Bit Shank | Hole Range | Connection Thread |
|------------------|-----------------------|----------------------------|-----------------------|-----------------------|-------------------------|
| 1261mm | 100.00Kg | ø142mm | SD6 | ø155-ø190 | API 3 1/2" Reg |
| Working Pressure | Impact rate at 1.7Mpa | Recommended rotation speed | Air Consumption | | |
| | | | 1.0Map | 1.8Mpa | 2.4Mpa |
| 1.0-2.5Mpa | 23HZ | 20-30r/min | 10m ³ /min | 20m ³ /min | 28.5m ³ /min |

MQL6 DTH HAMMER

High Air Pressure with foot valve DTH Hammers



| Item Description | Weight (Kg) | Part Number |
|--------------------------|-------------|-------------|
| 1 Top Sub | 20.00 | MQL601 |
| 2 "O" Ring of Top Sub | 0.02 | MQL602 |
| 3 Check Valve | 1.00 | MQL603 |
| 4 Spring | 0.10 | MQL604 |
| 5 Compression Buffer | 0.10 | MQL605 |
| 6 Air Distributor | 6.00 | MQL606 |
| 7 Internal Cylinder | 5.00 | MQL607 |
| 8 Piston | 23.50 | MQL608 |
| 9 External Cylinder | 31.00 | MQL609 |
| 10 Guided Sleeve | 1.00 | MQL610 |
| 11 "O" Ring of Stop Ring | 0.02 | MQL611 |
| 12 Stop Ring | 0.60 | MQL612 |
| 13 Drive Chuck | 5.40 | MQL613 |
| 14 Drill Bit | | MQL614 |

According to your request, the top sub can be made into two spanners, and put protection buttons. An air controlling hole can be drilled on the check valve to provide more efficient cuttings discharge.

Technical Date

| Length(Less bit) | Weight(Less bit) | External diameter | Bit Shank | Hole Range | Connection Thread |
|------------------|-----------------------|----------------------------|-----------------------|-----------------------|-------------------------|
| 1212mm | 95.00Kg | ø148mm | QL60 | ø155-ø190 | API 3 1/2" Reg |
| Working Pressure | Impact rate at 1.7Mpa | Recommended rotation speed | Air Consumption | | |
| | | | 1.0Map | 1.8Mpa | 2.4Mpa |
| 1.0-2.5Mpa | 23HZ | 20-30r/min | 10m ³ /min | 20m ³ /min | 28.5m ³ /min |

MD85 DTH HAMMER

High Air Pressure with foot valve DTH Hammers



| Item Description | Weight (Kg) | Part Number |
|--------------------------|-------------|-------------|
| 1 Top Sub | 41.00 | MD8501 |
| 2 "O" Ring of Top Sub | 0.02 | MD8502 |
| 3 Breakout Ring | 0.20 | MD8503 |
| 4 Check Valve | 1.50 | MD8504 |
| 5 Spring | 0.10 | MD8505 |
| 6 Compression Buffer | 0.42 | MD8506 |
| 7 Air Distributor | 0.13 | MD8507 |
| 8 Internal Cylinder | 8.60 | MD8508 |
| 9 Piston | 41.00 | MD8509 |
| 10 External Cylinder | 62.00 | MD8510 |
| 11 "O" Ring of Stop Ring | 0.02 | MD8511 |
| 12 Stop Ring | 1.20 | MD8512 |
| 13 Breakout Ring | 0.20 | MD8513 |
| 14 Drive Chuck | 17.50 | MD8514 |
| 15 Drill Bit | | MD8515 |

According to your request, the top sub can be made into two spanners, and put protection buttons. An air controlling hole can be drilled on the check valve to provide more efficient cuttings discharge.

Technical Date

| Length(Less bit) | Weight(Less bit) | External diameter | Bit Shank | Hole Range | Connection Thread |
|------------------|-----------------------|----------------------------|-----------------------|-----------------------|-----------------------|
| 1492mm | 188.00Kg | ø180mm | Cop84 DHD380 | ø195-ø254 | API 4 1/2" Reg |
| Working Pressure | Impact rate at 1.7Mpa | Recommended rotation speed | Air Consumption | | |
| | | | 1.0Map | 1.8Mpa | 2.4Mpa |
| 1.0-2.5Mpa | 20HZ | 20-30r/min | 15m ³ /min | 26m ³ /min | 34m ³ /min |

MSD8 DTH HAMMER

High Air Pressure with foot valve DTH Hammers



| | Item Description | Weight (Kg) | Part Number |
|----|-----------------------|-------------|-------------|
| 1 | Top Sub | 41.00 | MSD801 |
| 2 | "O" Ring of Top Sub | 0.02 | MSD802 |
| 3 | Breakout Ring | 0.20 | MSD803 |
| 4 | Check Valve | 1.50 | MSD804 |
| 5 | Spring | 0.10 | MSD805 |
| 6 | Compression Buffer | 0.42 | MSD806 |
| 7 | Air Distributor | 12.50 | MSD807 |
| 8 | Internal Cylinder | 8.60 | MSD808 |
| 9 | Piston | 42.00 | MSD809 |
| 10 | External Cylinder | 65.00 | MSD810 |
| 11 | "O" Ring of Stop Ring | 0.05 | MSD811 |
| 12 | Stop Ring | 1.20 | MSD812 |
| 13 | Guided Sleeve | 3.40 | MSD813 |
| 14 | Breakout Ring | 0.20 | MSD814 |
| 15 | Drive Chuck | 15.50 | MSD815 |
| 16 | Drill Bit | | MSD816 |

According to your request, the top sub can be made into two spanners, and put protection buttons. An air controlling hole can be drilled on the check valve to provide more efficient cuttings discharge.

Technical Date

| Length(Less bit) | Weight(Less bit) | External diameter | Bit Shank | Hole Range | Connection Thread |
|------------------|-----------------------|----------------------------|-----------------------|-----------------------|-----------------------|
| 1463mm | 192.00Kg | ø180mm | SD8 | ø195-ø254 | API 4 1/2" Reg |
| Working Pressure | Impact rate at 1.7Mpa | Recommended rotation speed | Air Consumption | | |
| | | | 1.0Map | 1.8Mpa | 2.4Mpa |
| 1.0-2.5Mpa | 20HZ | 15-25r/min | 15m ³ /min | 26m ³ /min | 34m ³ /min |

MQL8 DTH HAMMER

High Air Pressure with foot valve DTH Hammers



| Item Description | Weight (Kg) | Part Number |
|--------------------------|-------------|-------------|
| 1 Top Sub | 41.00 | MQL801 |
| 2 "O" Ring of Top Sub | 0.02 | MQL802 |
| 3 Breakout Ring | 0.30 | MQL803 |
| 4 Check Valve | 1.50 | MQL804 |
| 5 Spring | 0.10 | MQL805 |
| 6 Compression Buffer | 0.42 | MQL806 |
| 7 Air Distributor | 13.00 | MQL807 |
| 8 Internal Cylinder | 8.60 | MQL808 |
| 9 Piston | 41.00 | MQL809 |
| 10 External Cylinder | 60.00 | MQL810 |
| 11 "O" Ring of Stop Ring | 2.20 | MQL811 |
| 12 Stop Ring | 0.02 | MQL812 |
| 13 Guided Sleeve | 1.20 | MQL813 |
| 14 Breakout Ring | 0.30 | MQL814 |
| 15 Drive Chuck | 12.00 | MQL815 |
| 16 Drill Bit | | MQL816 |

According to your request, the top sub can be made into two spanners, and put protection buttons. An air controlling hole can be drilled on the check valve to provide more efficient cuttings discharge.

Technical Date

| Length(Less bit) | Weight(Less bit) | External diameter | Bit Shank | Hole Range | Connection Thread |
|------------------|-----------------------|----------------------------|-----------------------|-----------------------|-----------------------|
| 1465mm | 182.00Kg | ø185mm | QL80 | ø195-ø254 | API 4 1/2" Reg |
| Working Pressure | Impact rate at 1.7Mpa | Recommended rotation speed | Air Consumption | | |
| | | | 1.0Map | 1.8Mpa | 2.4Mpa |
| 1.0-2.5Mpa | 20HZ | 15-25r/min | 15m ³ /min | 26m ³ /min | 34m ³ /min |

MSD10 DTH HAMMER

High Air Pressure with foot valve DTH Hammers



| Item Description | Weight (Kg) | Part Number |
|--------------------------|-------------|-------------|
| 1 Top Sub | 59.00 | MSD1001 |
| 2 "O" Ring of Top Sub | 0.03 | MSD1002 |
| 3 Breakout Ring | 0.30 | MSD1003 |
| 4 Check Valve | 1.40 | MSD1004 |
| 5 Spring | 0.30 | MSD1005 |
| 6 Compression Buffer | 0.60 | MSD1006 |
| 7 Air Distributor | 11.50 | MSD1007 |
| 8 Internal Cylinder | 11.00 | MSD1008 |
| 9 Piston | 62.00 | MSD1009 |
| 10 External Cylinder | 110.00 | MSD1010 |
| 11 "O" Ring of Stop Ring | 0.03 | MSD1011 |
| 12 Stop Ring | 1.60 | MSD1012 |
| 13 Guided Sleeve | 4.50 | MSD1013 |
| 14 Breakout Ring | 0.30 | MSD1014 |
| 15 Drive Chuck | 24.00 | MSD1015 |
| 16 Drill Bit | | MSD1016 |

According to your request, the top sub can be made into two spanners, and put protection buttons. An air controlling hole can be drilled on the check valve to provide more efficient cuttings discharge.

Technical Date

| Length(Less bit) | Weight(Less bit) | External diameter | Bit Shank | Hole Range | Connection Thread |
|------------------|-----------------------|----------------------------|-----------------------|-----------------------|----------------------------------|
| 1502mm | 290.00Kg | ø225mm | SD10 | ø254-ø311 | API 4 1/2" Reg API 5 1/2" Reg |
| Working Pressure | Impact rate at 1.7Mpa | Recommended rotation speed | Air Consumption | | |
| | | | 1.0Map | 1.8Mpa | 2.4Mpa |
| 1.0-2.5Mpa | 18HZ | 15-25r/min | 22m ³ /min | 40m ³ /min | 55m ³ /min |

MN100 DTH HAMMER

High Air Pressure with foot valve DTH Hammers



| Item Description | Weight (Kg) | Part Number |
|--------------------------|-------------|-------------|
| 1 Top Sub | 59.00 | MN10001 |
| 2 "O" Ring of Top Sub | 0.03 | MN10002 |
| 3 Breakout Ring | 0.40 | MN10003 |
| 4 Check Valve | 1.60 | MN10004 |
| 5 Spring | 0.30 | MN10005 |
| 6 Compression Buffer | 0.60 | MN10006 |
| 7 Air Distributor | 11.50 | MN10007 |
| 8 Internal Cylinder | 11.00 | MN10008 |
| 9 Piston | 62.00 | MN10009 |
| 10 External Cylinder | 112.00 | MN10010 |
| 11 "O" Ring of Stop Ring | 0.03 | MN10011 |
| 12 Stop Ring | 1.50 | MN10012 |
| 13 Breakout Ring | 0.40 | MN10013 |
| 14 Drive Chuck | 26.00 | MN10014 |
| 15 Drill Bit | | MN10015 |

According to your request, the top sub can be made into two spanners, and put protection buttons. An air controlling hole can be drilled on the check valve to provide more efficient cuttings discharge.

Technical Date

| Length(Less bit) | Weight(Less bit) | External diameter | Bit Shank | Hole Range | Connection Thread |
|------------------|-----------------------|----------------------------|-----------------------|-----------------------|-----------------------|
| 1510mm | 288.00Kg | ø225mm | NUMA100 | ø254-ø311 | API 6 5/8" Reg |
| Working Pressure | Impact rate at 1.7Mpa | Recommended rotation speed | Air Consumption | | |
| | | | 1.0Map | 1.8Mpa | 2.4Mpa |
| 1.0-2.5Mpa | 18HZ | 15-25r/min | 22m ³ /min | 45m ³ /min | 60m ³ /min |

MSD12 DTH HAMMER

High Air Pressure with foot valve DTH Hammers



| Item Description | Weight (Kg) | Part Number |
|--------------------------|-------------|-------------|
| 1 Top Sub | 70.00 | MSD1201 |
| 2 "O" Ring of Top Sub | 0.04 | MSD1202 |
| 3 Breakout Ring | 0.80 | MSD1203 |
| 4 Check Valve | 3.00 | MSD1204 |
| 5 Spring | 0.10 | MSD1205 |
| 6 Compression Buffer | 1.00 | MSD1206 |
| 7 Air Distributor | 20.00 | MSD1207 |
| 8 Internal Cylinder | 23.00 | MSD1208 |
| 9 Piston | 125.00 | MSD1209 |
| 10 External Cylinder | 170.00 | MSD1210 |
| 11 "O" Ring of Stop Ring | 0.04 | MSD1211 |
| 12 Stop Ring | 4.80 | MSD1212 |
| 13 Guided Sleeve | 18.00 | MSD1213 |
| 14 Breakout Ring | 0.80 | MSD1214 |
| 15 Drive Chuck | 51.00 | MSD1215 |
| 16 Drill Bit | | MSD1216 |

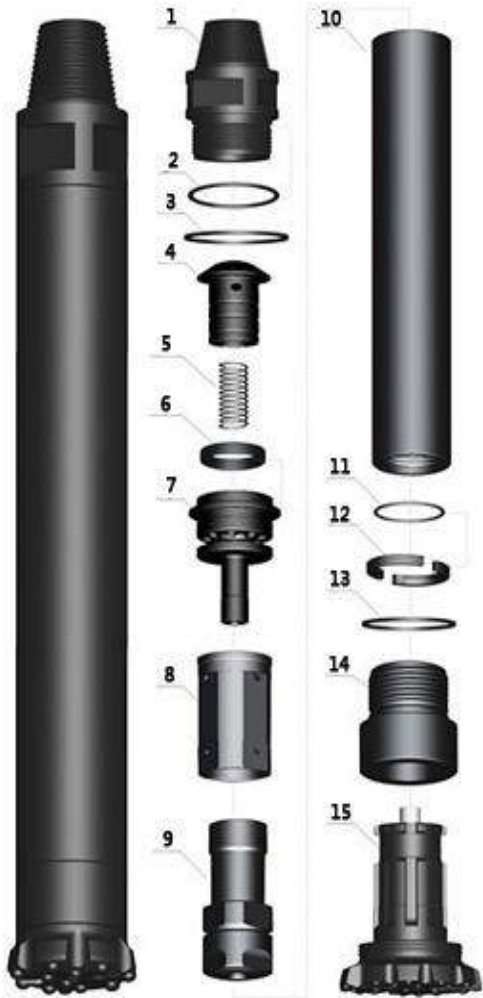
According to your request, the top sub can be made into two spanners, and put protection buttons. An air controlling hole can be drilled on the check valve to provide more efficient cuttings discharge.

Technical Date

| Length(Less bit) | Weight(Less bit) | External diameter | Bit Shank | Hole Range | Connection Thread |
|------------------|-----------------------|----------------------------|-----------------------|-----------------------|-----------------------|
| 1880mm | 487.00Kg | ø275mm | SD12 | ø305-ø445 | API 6 5/8" Reg |
| Working Pressure | Impact rate at 1.7Mpa | Recommended rotation speed | Air Consumption | | |
| | | | 1.0Map | 1.8Mpa | 2.4Mpa |
| 1.0-2.5Mpa | 16HZ | 15-25r/min | 30m ³ /min | 56m ³ /min | 78m ³ /min |

MN125 DTH HAMMER

High Air Pressure with foot valve DTH Hammers



| Item Description | Weight (Kg) | Part Number |
|--------------------------|-------------|-------------|
| 1 Top Sub | 70.00 | MN12501 |
| 2 "O" Ring of Top Sub | 0.04 | MN12502 |
| 3 Breakout Ring | 0.80 | MN12503 |
| 4 Check Valve | 3.00 | MN12504 |
| 5 Spring | 0.10 | MN12505 |
| 6 Compression Buffer | 1.00 | MN12506 |
| 7 Air Distributor | 20.00 | MN12507 |
| 8 Internal Cylinder | 23.00 | MN12508 |
| 9 Piston | 125.00 | MN12509 |
| 10 External Cylinder | 170.00 | MN12510 |
| 11 "O" Ring of Stop Ring | 0.01 | MN12511 |
| 12 Stop Ring | 4.00 | MN12512 |
| 13 Breakout Ring | 0.80 | MN12513 |
| 14 Drive Chuck | 45.00 | MN12514 |
| 15 Drill Bit | | MN12515 |

According to your request, the top sub can be made into two spanners, and put protection buttons. An air controlling hole can be drilled on the check valve to provide more efficient cuttings discharge.

Technical Date

| Length(Less bit) | Weight(Less bit) | External diameter | Bit Shank | Hole Range | Connection Thread |
|------------------|-----------------------|----------------------------|-----------------------|-----------------------|-----------------------|
| 1900mm | 480.00Kg | ø275mm | NUMA125 | ø305-ø445 | API 6 5/8" Reg |
| Working Pressure | Impact rate at 1.7Mpa | Recommended rotation speed | Air Consumption | | |
| | | | 1.0Map | 1.8Mpa | 2.4Mpa |
| 1.0-2.5Mpa | 16HZ | 15-25r/min | 30m ³ /min | 56m ³ /min | 78m ³ /min |

The Characteristics Of High Air Pressure

-without foot valve DTH Hammers

It is a kind of high air pressure DTH Hammer without foot valve,our newest design.It is also one of the most advanced DTH Hammers in the world.

It has the following characteristics:

- ◆ Out of the trouble of foot valve fracture and expansion and contraction.
- ◆ Lower energy consumption and higher impact frequency.

The drilling speed is 15%-30% higher than the same type with the valve.

- ◆ Simple structure ,reliable parts, long life , easy and cheap maintenance.
- ◆ Lower air and oil consumption. The oil consumption is about 10% lower than the one with foot valve.

Explanation of high Air Pressure

-without foot valve DTH Hammer Code

Example One:MD55A

M— Maxdrill (Our company name)

D—DHD Bit Shank

5—5"hammer

5—The Fifth Generation Hammer

A—Bit without foot valve

Example Two:MQL4A

M— Maxdrill (Our company name)

QL4—QL40 Bit Shank

A—Bit without foot valve

S—Smaller size than general DTH Hammer

MBR1A DTH HAMMER

Middle-Low Air Pressure DTH Hammer without foot valve



Item Description

Weight (Kg)

Part Number

| | | | |
|----|-----------------------|------|--------|
| 1 | Top Sub | 1.70 | MBR101 |
| 2 | Check Valve | 0.10 | MBR102 |
| 3 | Spring | 0.05 | MBR103 |
| 4 | Air Distributor | 0.80 | MBR104 |
| 5 | Internal Cylinder | 0.80 | MBR105 |
| 6 | Piston | 1.20 | MBR106 |
| 7 | External Cylinder | 4.00 | MBR107 |
| 8 | Guided Sleeve | 0.15 | MBR108 |
| 9 | "O" Ring of Stop Ring | 0.05 | MBR109 |
| 10 | Stop Ring | 0.10 | MBR110 |
| 11 | Drive Chuck | 0.80 | MBR111 |
| 12 | Drill Bit | | MBR112 |

Technical Date

| Length(Less bit) | Weight(Less bit) | External diameter | Bit Shank | Hole Range | Connection Thread |
|------------------|-----------------------|----------------------------|------------------------|------------------------|----------------------|
| 760mm | 10.00Kg | ø54mm | BR1 | ø64-ø76 | RD 40 BOX |
| Working Pressure | Impact rate at 1.4Mpa | Recommended rotation speed | Air Consumption | | |
| | | | 0.7Map | 1.0Map | 1.5Mpa |
| 0.7-1.75Mpa | 27HZ | 25-40r/min | 1.5m ³ /min | 2.5m ³ /min | 3m ³ /min |

MBR2A DTH HAMMER

Middle-Low Air Pressure DTH Hammer without foot valve



| Item Description | Weight (Kg) | Part Number |
|-------------------------|-------------|-------------|
| 1 Top Sub | 2.60 | MBR201 |
| 2 Check Valve | 0.10 | MBR202 |
| 3 Spring | 0.05 | MBR203 |
| 4 Air Distributor | 0.60 | MBR204 |
| 5 Internal Cylinder | 0.80 | MBR205 |
| 6 Piston | 3.80 | MBR206 |
| 7 External Cylinder | 4.50 | MBR207 |
| 8 Guided Sleeve | 0.60 | MBR208 |
| 9 "O" Ring of Stop Ring | 0.01 | MBR209 |
| 10 Stop Ring | 0.10 | MBR210 |
| 11 Drive Chuck | 1.20 | MBR211 |
| 12 Drill Bit | | MBR212 |

Technical Date

| Length(Less bit) | Weight(Less bit) | External diameter | Bit Shank | Hole Range | Connection Thread |
|------------------|-----------------------|----------------------------|------------------------|----------------------|----------------------|
| 880mm | 14.50Kg | ø62mm | BR2 | ø70-ø90 | RD 50 BOX |
| Working Pressure | Impact rate at 1.4Mpa | Recommended rotation speed | Air Consumption | | |
| | | | 0.7Map | 1.0Map | 1.5Mpa |
| 0.7-1.75Mpa | 25HZ | 25-40r/min | 2.5m ³ /min | 4m ³ /min | 5m ³ /min |

MD25A DTH HAMMER

High Air Pressure without foot valve DTH Hammers



| Item Description | Weight (Kg) | Part Number |
|-------------------------|-------------|-------------|
| 1 Top Sub | 3.10 | MD25A01 |
| 2 Check Valve | 0.10 | MD25A02 |
| 3 Spring | 0.05 | MD25A03 |
| 4 Air Distributor | 0.60 | MD25A04 |
| 5 Internal Cylinder | 0.80 | MD25A05 |
| 6 Piston | 3.80 | MD25A06 |
| 7 External Cylinder | 4.50 | MD25A07 |
| 8 Guided Sleeve | 0.60 | MD25A08 |
| 9 "O" Ring of Stop Ring | 0.005 | MD25A09 |
| 10 Stop Ring | 0.10 | MD25A10 |
| 11 Drive Chuck | 1.40 | MD25A11 |
| 12 Drill Bit | | MD25A12 |

Technical Date

| Length(Less bit) | Weight(Less bit) | External diameter | Bit Shank | Hole Range | Connection Thread |
|------------------|-----------------------|----------------------------|----------------------|----------------------|-------------------|
| 872mm | 16.00Kg | ø71mm | HD25 | ø76-ø90 | T42×10×1.5 |
| Working Pressure | Impact rate at 1.5Mpa | Recommended rotation speed | 1.0Map | | 1.5Mpa |
| | | | 4m ³ /min | 6m ³ /min | |
| 1.0-2.5Mpa | 25HZ | 22-35r/min | | | |

MD35A DTH HAMMER

High Air Pressure without foot valve DTH Hammers



| Item Description | Weight (Kg) | Part Number |
|--------------------------|-------------|-------------|
| 1 Top Sub | 4.20 | MD35A01 |
| 2 "O" Ring of Top Sub | 0.01 | MD35A02 |
| 3 Check Valve | 0.20 | MD35A03 |
| 4 Spring | 0.02 | MD35A04 |
| 5 Air Distributor | 0.80 | MD35A05 |
| 6 Internal Cylinder | 1.30 | MD35A06 |
| 7 Piston | 5.50 | MD35A07 |
| 8 External Cylinder | 9.50 | MD35A08 |
| 9 Guided Sleeve | 1.00 | MD35A09 |
| 10 "O" Ring of Stop Ring | 0.05 | MD35A10 |
| 11 Stop Ring | 0.15 | MD35A11 |
| 12 Drive Chuck | 1.90 | MD35A12 |
| 13 Drill Bit | | MD35A13 |

According to your request, the top sub can be made into two spanners, and put protection buttons. An air controlling hole can be drilled on the check valve to provide more efficient cuttings discharge.

Technical Date

| Length(Less bit) | Weight(Less bit) | External diameter | Bit Shank | Hole Range | Connection Thread |
|------------------|-----------------------|----------------------------|-----------|------------------------|------------------------|
| 888mm | 25.00Kg | ø82mm | IR3.5 | ø90-ø115 | API 2 3/8" Reg |
| Working Pressure | Impact rate at 1.5Mpa | Recommended rotation speed | | | |
| | | | 1.0Map | 1.5Mpa | |
| 1.0-2.5Mpa | 25HZ | 25-40r/min | | 3.8m ³ /min | 7.5m ³ /min |

MD45A DTH HAMMER

High Air Pressure without foot valve DTH Hammers



| Item Description | Weight (Kg) | Part Number |
|--------------------------|-------------|-------------|
| 1 Top Sub | 6.50 | MD45A01 |
| 2 "O" Ring of Top Sub | 0.01 | MD45A02 |
| 3 Check Valve | 0.35 | MD45A03 |
| 4 Spring | 0.05 | MD45A04 |
| 5 Compression Buffer | 1.50 | MD45A05 |
| 6 Air Distributor | 2.10 | MD45A06 |
| 7 Piston | 8.50 | MD45A07 |
| 8 External Cylinder | 15.20 | MD45A08 |
| 9 Guided Sleeve | 1.30 | MD45A09 |
| 10 "O" Ring of Stop Ring | 0.01 | MD45A10 |
| 11 Stop Ring | 0.30 | MD45A11 |
| 12 Drive Chuck | 3.40 | MD45A12 |
| 13 Drill Bit | | MD45A13 |

According to your request, the top sub can be made into two spanners, and put protection buttons. An air controlling hole can be drilled on the check valve to provide more efficient cuttings discharge.

Technical Date

| Length(Less bit) | Weight(Less bit) | External diameter | Bit Shank | Hole Range | Connection Thread |
|------------------|-----------------------|----------------------------|----------------------|-----------------------|-----------------------|
| 1011mm | 43.20Kg | ø99mm | Cop44 DHD340 | ø110-ø135 | API 2 3/8" Reg |
| Working Pressure | Impact rate at 1.7Mpa | Recommended rotation speed | Air Consumption | | |
| | | | 1.0Map | 1.8Mpa | 2.4Mpa |
| 1.0-3.0Mpa | 30HZ | 22-35r/min | 6m ³ /min | 10m ³ /min | 15m ³ /min |

MD45S DTH HAMMER

High Air Pressure without foot valve DTH Hammers



| Item Description | Weight (Kg) | Part Number |
|--------------------------|-------------|-------------|
| 1 Top Sub | 6.00 | MD45S01 |
| 2 "O" Ring of Top Sub | 0.01 | MD45S02 |
| 3 Check Valve | 0.30 | MD45S03 |
| 4 Spring | 0.05 | MD45S04 |
| 5 Air Distributor | 1.30 | MD45S05 |
| 6 Internal Cylinder | 1.90 | MD45S06 |
| 7 Piston | 7.80 | MD45S07 |
| 8 External Cylinder | 14.60 | MD45S08 |
| 9 Guided Sleeve | 1.20 | MD45S09 |
| 10 "O" Ring of Stop Ring | 0.005 | MD45S10 |
| 11 Stop Ring | 0.20 | MD45S11 |
| 12 Drive Chuck | 3.40 | MD45S12 |
| 13 Drill Bit | | MD45S13 |

According to your request, the top sub can be made into two spanners, and put protection buttons. An air controlling hole can be drilled on the check valve to provide more efficient cuttings discharge.

Technical Date

| Length(Less bit) | Weight(Less bit) | External diameter | Bit Shank | Hole Range | Connection Thread |
|------------------|-----------------------|----------------------------|----------------------|----------------------|-----------------------|
| 986mm | 37.00Kg | ø92mm | Cop44 DHD340 | ø105-ø120 | API 2 3/8" Reg |
| Working Pressure | Impact rate at 1.7Mpa | Recommended rotation speed | Air Consumption | | |
| | | | 1.0Map | 1.8Mpa | 2.4Mpa |
| 1.0-3.0Mpa | 30HZ | 25-40r/min | 5m ³ /min | 8m ³ /min | 13m ³ /min |

MM4A DTH HAMMER

High Air Pressure without foot valve DTH Hammers



| Item Description | Weight (Kg) | Part Number |
|--------------------------|-------------|-------------|
| 1 Top Sub | 6.50 | MM4A01 |
| 2 "O" Ring of Top Sub | 0.01 | MM4A02 |
| 3 Check Valve | 0.35 | MM4A03 |
| 4 Spring | 0.05 | MM4A04 |
| 5 Compression Buffer | 1.50 | MM4A05 |
| 6 Air Distributor | 2.10 | MM4A06 |
| 7 Piston | 8.50 | MM4A07 |
| 8 External Cylinder | 14.80 | MM4A08 |
| 9 Guided Sleeve | 1.80 | MM4A09 |
| 10 "O" Ring of Stop Ring | 0.005 | MM4A10 |
| 11 Stop Ring | 0.30 | MM4A11 |
| 12 Drive Chuck | 3.80 | MM4A12 |
| 13 Drill Bit | | MM4A13 |

According to your request, the top sub can be made into two spanners, and put protection buttons. An air controlling hole can be drilled on the check valve to provide more efficient cuttings discharge.

Technical Date

| Length(Less bit) | Weight(Less bit) | External diameter | Bit Shank | Hole Range | Connection Thread |
|------------------|-----------------------|----------------------------|----------------------|----------------------|-----------------------|
| 1005mm | 40.00Kg | ø99mm | HM4 | ø110-ø135 | API 2 3/8" Reg |
| Working Pressure | Impact rate at 1.7Mpa | Recommended rotation speed | Air Consumption | | |
| | | | 1.0Map | 1.8Mpa | 2.4Mpa |
| 1.0-3.0Mpa | 30HZ | 25-40r/min | 5m ³ /min | 9m ³ /min | 14m ³ /min |

MQL4A DTH HAMMER

High Air Pressure without foot valve DTH Hammers



| Item Description | Weight (Kg) | Part Number |
|--------------------------|-------------|-------------|
| 1 Top Sub | 6.50 | MQL4A01 |
| 2 "O" Ring of Top Sub | 0.01 | MQL4A02 |
| 3 Check Valve | 0.35 | MQL4A03 |
| 4 Spring | 0.05 | MQL4A04 |
| 5 Air Distributor | 1.50 | MQL4A05 |
| 6 Internal Cylinder | 2.10 | MQL4A06 |
| 7 Piston | 8.50 | MQL4A07 |
| 8 External Cylinder | 15.20 | MQL4A08 |
| 9 Guided Sleeve | 1.80 | MQL4A09 |
| 10 "O" Ring of Stop Ring | 0.005 | MQL4A10 |
| 11 Stop Ring | 0.20 | MQL4A11 |
| 12 Drive Chuck | 3.20 | MQL4A12 |
| 13 Drill Bit | | MQL4A13 |

According to your request, the top sub can be made into two spanners, and put protection buttons. An air controlling hole can be drilled on the check valve to provide more efficient cuttings discharge.

Technical Date

| Length(Less bit) | Weight(Less bit) | External diameter | Bit Shank | Hole Range | Connection Thread |
|------------------|-----------------------|----------------------------|----------------------|----------------------|-----------------------|
| 1070mm | 40.00Kg | ø99mm | QL40 | ø110-ø135 | API 2 3/8" Reg |
| Working Pressure | Impact rate at 1.7Mpa | Recommended rotation speed | Air Consumption | | |
| | | | 1.0Map | 1.8Mpa | 2.4Mpa |
| 1.0-3.0Mpa | 30HZ | 25-40r/min | 5m ³ /min | 9m ³ /min | 14m ³ /min |

MD55A DTH HAMMER

High Air Pressure without foot valve DTH Hammers



| Item Description | Weight (Kg) | Part Number |
|--------------------------|-------------|-------------|
| 1 Top Sub | 13.70 | MD55A01 |
| 2 "O" Ring of Top Sub | 0.015 | MD55A02 |
| 3 Check Valve | 0.70 | MD55A03 |
| 4 Spring | 0.10 | MD55A04 |
| 5 Air Distributor | 2.00 | MD55A05 |
| 6 Internal Cylinder | 2.80 | MD55A06 |
| 7 Piston | 15.00 | MD55A07 |
| 8 External Cylinder | 24.00 | MD55A08 |
| 9 Guided Sleeve | 2.60 | MD55A09 |
| 10 "O" Ring of Stop Ring | 0.01 | MD55A10 |
| 11 Stop Ring | 0.50 | MD55A11 |
| 12 Drive Chuck | 6.50 | MD55A12 |
| 13 Drill Bit | | MD55A13 |

According to your request, the top sub can be made into two spanners, and put protection buttons. An air controlling hole can be drilled on the check valve to provide more efficient cuttings discharge.

Technical Date

| Length(Less bit) | Weight(Less bit) | External diameter | Bit Shank | Hole Range | Connection Thread |
|------------------|-----------------------|----------------------------|----------------------|-----------------------|----------------------------------|
| 1110mm | 69.00Kg | ø125mm | Cop54 DHD350R | ø135-ø155 | API 2 3/8" Reg API 3 1/2" Reg |
| Working Pressure | Impact rate at 1.7Mpa | Recommended rotation speed | Air Consumption | | |
| | | | 1.0Map | 1.8Mpa | 2.4Mpa |
| 1.0-3.0Mpa | 28HZ | 20-35r/min | 7m ³ /min | 14m ³ /min | 19m ³ /min |

MD55S DTH HAMMER

High Air Pressure without foot valve DTH Hammers



| Item Description | Weight (Kg) | Part Number |
|--------------------------|-------------|-------------|
| 1 Top Sub | 13.30 | MD55S01 |
| 2 "O" Ring of Top Sub | 0.015 | MD55S02 |
| 3 Check Valve | 0.70 | MD55S03 |
| 4 Spring | 0.10 | MD55S04 |
| 5 Air Distributor | 1.90 | MD55S05 |
| 6 Internal Cylinder | 2.70 | MD55S06 |
| 7 Piston | 14.50 | MD55S07 |
| 8 External Cylinder | 23.00 | MD55S08 |
| 9 Guided Sleeve | 2.50 | MD55S09 |
| 10 "O" Ring of Stop Ring | 0.01 | MD55S10 |
| 11 Stop Ring | 0.50 | MD55S11 |
| 12 Drive Chuck | 6.20 | MD55S12 |
| 13 Drill Bit | | MD55S13 |

According to your request, the top sub can be made into two spanners, and put protection buttons. An air controlling hole can be drilled on the check valve to provide more efficient cuttings discharge.

Technical Date

| Length(Less bit) | Weight(Less bit) | External diameter | Bit Shank | Hole Range | Connection Thread |
|------------------|-----------------------|----------------------------|----------------------|-------------------------|----------------------------------|
| 1110mm | 66.00Kg | ø116mm | Cop54 DHD350R | ø127-ø145 | API 2 3/8" Reg API 3 1/2" Reg |
| Working Pressure | Impact rate at 1.7Mpa | Recommended rotation speed | Air Consumption | | |
| | | | 1.0Map | 1.8Mpa | 2.4Mpa |
| 1.0-3.0Mpa | 28HZ | 20-35r/min | 7m ³ /min | 13.5m ³ /min | 18m ³ /min |

MM5A DTH HAMMER

High Air Pressure without foot valve DTH Hammers



| Item Description | Weight (Kg) | Part Number |
|--------------------------|-------------|-------------|
| 1 Top Sub | 13.70 | MM5A01 |
| 2 "O" Ring of Top Sub | 0.015 | MM5A02 |
| 3 Check Valve | 0.70 | MM5A03 |
| 4 Spring | 0.10 | MM5A04 |
| 5 Air Distributor | 2.00 | MM5A05 |
| 6 Internal Cylinder | 2.80 | MM5A06 |
| 7 Piston | 15.00 | MM5A07 |
| 8 External Cylinder | 24.00 | MM5A08 |
| 9 Guided Sleeve | 2.60 | MM5A09 |
| 10 "O" Ring of Stop Ring | 0.01 | MM5A10 |
| 11 Stop Ring | 0.70 | MM5A11 |
| 12 Drive Chuck | 6.50 | MM5A12 |
| 13 Drill Bit | | MM5A13 |

According to your request, the top sub can be made into two spanners, and put protection buttons. An air controlling hole can be drilled on the check valve to provide more efficient cuttings discharge.

Technical Date

| Length(Less bit) | Weight(Less bit) | External diameter | Bit Shank | Hole Range | Connection Thread |
|------------------|-----------------------|----------------------------|----------------------|-----------------------|----------------------------------|
| 1110mm | 68.50Kg | ø125mm | HM5 | ø135-ø155 | API 2 3/8" Reg API 3 1/2" Reg |
| Working Pressure | Impact rate at 1.7Mpa | Recommended rotation speed | Air Consumption | | |
| | | | 1.0Mpa | 1.8Mpa | 2.4Mpa |
| 1.0-3.0Mpa | 28HZ | 20-35r/min | 7m ³ /min | 14m ³ /min | 19m ³ /min |

MSD5A DTH HAMMER

High Air Pressure without foot valve DTH Hammers



| Item Description | Weight (Kg) | Part Number |
|--------------------------|-------------|-------------|
| 1 Top Sub | 13.70 | MSD5A01 |
| 2 "O" Ring of Top Sub | 0.015 | MSD5A02 |
| 3 Check Valve | 0.70 | MSD5A03 |
| 4 Spring | 0.10 | MSD5A04 |
| 5 Air Distributor | 2.00 | MSD5A05 |
| 6 Internal Cylinder | 2.80 | MSD5A06 |
| 7 Piston | 15.00 | MSD5A07 |
| 8 External Cylinder | 24.00 | MSD5A08 |
| 9 Guided Sleeve | 2.60 | MSD5A09 |
| 10 "O" Ring of Stop Ring | 0.01 | MSD5A10 |
| 11 Stop Ring | 0.50 | MSD5A11 |
| 12 Drive Chuck | 7.50 | MSD5A12 |
| 13 Drill Bit | | MSD5A13 |

According to your request, the top sub can be made into two spanners, and put protection buttons. An air controlling hole can be drilled on the check valve to provide more efficient cuttings discharge.

Technical Date

| Length(Less bit) | Weight(Less bit) | External diameter | Bit Shank | Hole Range | Connection Thread |
|------------------|-----------------------|----------------------------|----------------------|-----------------------|----------------------------------|
| 1090mm | 70.00Kg | ø125mm | SD5 | ø135-ø155 | API 2 3/8" Reg API 3 1/2" Reg |
| Working Pressure | Impact rate at 1.7Mpa | Recommended rotation speed | Air Consumption | | |
| | | | 1.0Map | 1.8Mpa | 2.4Mpa |
| 1.0-3.0Mpa | 28HZ | 20-35r/min | 7m ³ /min | 14m ³ /min | 19m ³ /min |

MQL5A DTH HAMMER

High Air Pressure without foot valve DTH Hammers



| Item Description | Weight (Kg) | Part Number |
|--------------------------|-------------|-------------|
| 1 Top Sub | 13.70 | MQL5A01 |
| 2 "O" Ring of Top Sub | 0.015 | MQL5A02 |
| 3 Check Valve | 0.70 | MQL5A03 |
| 4 Spring | 0.10 | MQL5A04 |
| 5 Air Distributor | 2.00 | MQL5A05 |
| 6 Internal Cylinder | 2.70 | MQL5A06 |
| 7 Piston | 15.00 | MQL5A07 |
| 8 External Cylinder | 24.00 | MQL5A08 |
| 9 Guided Sleeve | 3.00 | MQL5A09 |
| 10 "O" Ring of Stop Ring | 0.01 | MQL5A10 |
| 11 Stop Ring | 0.40 | MQL5A11 |
| 12 Drive Chuck | 4.50 | MQL5A12 |
| 13 Drill Bit | | MQL5A13 |

According to your request, the top sub can be made into two spanners, and put protection buttons. An air controlling hole can be drilled on the check valve to provide more efficient cuttings discharge.

Technical Date

| Length(Less bit) | Weight(Less bit) | External diameter | Bit Shank | Hole Range | Connection Thread |
|------------------|-----------------------|----------------------------|----------------------|-----------------------|----------------------------------|
| 1090mm | 67.00Kg | ø125mm | QL50 | ø135-ø155 | API 2 3/8" Reg API 3 1/2" Reg |
| Working Pressure | Impact rate at 1.7Mpa | Recommended rotation speed | Air Consumption | | |
| | | | 1.0Map | 1.8Mpa | 2.4Mpa |
| 1.0-3.0Mpa | 28HZ | 20-35r/min | 7m ³ /min | 14m ³ /min | 19m ³ /min |

MD65A DTH HAMMER

High Air Pressure without foot valve DTH Hammers



| Item Description | Weight (Kg) | Part Number |
|--------------------------|-------------|-------------|
| 1 Top Sub | 20.00 | MD65A01 |
| 2 "O" Ring of Top Sub | 0.02 | MD65A02 |
| 3 Check Valve | 0.70 | MD65A03 |
| 4 Spring | 0.10 | MD65A04 |
| 5 Air Distributor | 3.50 | MD65A05 |
| 6 Internal Cylinder | 4.20 | MD65A06 |
| 7 Piston | 23.00 | MD65A07 |
| 8 External Cylinder | 31.50 | MD65A08 |
| 9 Guided Sleeve | 6.50 | MD65A09 |
| 10 "O" Ring of Stop Ring | 0.01 | MD65A10 |
| 11 Stop Ring | 0.60 | MD65A11 |
| 12 Drive Chuck | 6.00 | MD65A12 |
| 13 Drill Bit | | MD65A13 |

According to your request, the top sub can be made into two spanners, and put protection buttons. An air controlling hole can be drilled on the check valve to provide more efficient cuttings discharge.

Technical Date

| Length(Less bit) | Weight(Less bit) | External diameter | Bit Shank | Hole Range | Connection Thread |
|------------------|-----------------------|----------------------------|----------------------|-----------------------|-----------------------|
| 1238mm | 98.00Kg | ø148mm | Cop64 DHD360 | ø155-ø203 | API 3 1/2" Reg |
| Working Pressure | Impact rate at 1.7Mpa | Recommended rotation speed | Air Consumption | | |
| | | | 1.0Map | 1.8Mpa | 2.4Mpa |
| 1.0-3.0Mpa | 25HZ | 20-30r/min | 9m ³ /min | 18m ³ /min | 26m ³ /min |

MM6A DTH HAMMER

High Air Pressure without foot valve DTH Hammers



| Item Description | Weight (Kg) | Part Number |
|--------------------------|-------------|-------------|
| 1 Top Sub | 20.00 | MM6A01 |
| 2 "O" Ring of Top Sub | 0.015 | MM6A02 |
| 3 Check Valve | 0.70 | MM6A03 |
| 4 Spring | 0.10 | MM6A04 |
| 5 Air Distributor | 3.50 | MM6A05 |
| 6 Internal Cylinder | 4.20 | MM6A06 |
| 7 Piston | 23.00 | MM6A07 |
| 8 External Cylinder | 26.00 | MM6A08 |
| 9 Guided Sleeve | 4.80 | MM6A09 |
| 10 "O" Ring of Stop Ring | 0.01 | MM6A10 |
| 11 Stop Ring | 0.80 | MM6A11 |
| 12 Drive Chuck | 4.20 | MM6A12 |
| 13 Drill Bit | | MM6A13 |

According to your request, the top sub can be made into two spanners, and put protection buttons. An air controlling hole can be drilled on the check valve to provide more efficient cuttings discharge.

Technical Date

| Length(Less bit) | Weight(Less bit) | External diameter | Bit Shank | Hole Range | Connection Thread |
|------------------|-----------------------|----------------------------|----------------------|-----------------------|-----------------------|
| 1161mm | 90.00Kg | ø146mm | HM6 | ø155-ø203 | API 3 1/2" Reg |
| Working Pressure | Impact rate at 2.4Mpa | Recommended rotation speed | Air Consumption | | |
| | | | 1.0Map | 1.8Mpa | 2.4Mpa |
| 1.0-3.0Mpa | 25HZ | 20-30r/min | 9m ³ /min | 18m ³ /min | 26m ³ /min |

MSD6A DTH HAMMER

High Air Pressure without foot valve DTH Hammers



| | Item Description | Weight (Kg) | Part Number |
|----|-----------------------|-------------|-------------|
| 1 | Top Sub | 20.00 | MSD6A01 |
| 2 | "O" Ring of Top Sub | 0.015 | MSD6A02 |
| 3 | Check Valve | 0.70 | MSD6A03 |
| 4 | Spring | 0.10 | MSD6A04 |
| 5 | Air Distributor | 3.50 | MSD6A05 |
| 6 | Internal Cylinder | 4.20 | MSD6A06 |
| 7 | Piston | 23.00 | MSD6A07 |
| 8 | External Cylinder | 28.00 | MSD6A08 |
| 9 | Guided Sleeve | 2.50 | MSD6A09 |
| 10 | "O" Ring of Stop Ring | 0.01 | MSD6A10 |
| 11 | Stop Ring | 0.50 | MSD6A11 |
| 12 | Drive Chuck | 7.50 | MSD6A12 |
| 13 | Drill Bit | | MSD6A13 |

According to your request, the top sub can be made into two spanners, and put protection buttons. An air controlling hole can be drilled on the check valve to provide more efficient cuttings discharge.

Technical Date

| Length(Less bit) | Weight(Less bit) | External diameter | Bit Shank | Hole Range | Connection Thread |
|------------------|-----------------------|----------------------------|----------------------|-----------------------|-----------------------|
| 1182mm | 90.00Kg | ø146mm | SD6 | ø155-ø203 | API 3 1/2" Reg |
| Working Pressure | Impact rate at 1.7Mpa | Recommended rotation speed | Air Consumption | | |
| | | | 1.0Map | 1.8Mpa | 2.4Mpa |
| 1.0-3.0Mpa | 25HZ | 20-30r/min | 9m ³ /min | 18m ³ /min | 26m ³ /min |

MQL6A DTH HAMMER

High Air Pressure without foot valve DTH Hammers



| Item Description | Weight (Kg) | Part Number |
|--------------------------|-------------|-------------|
| 1 Top Sub | 20.00 | MQL6A01 |
| 2 "O" Ring of Top Sub | 0.015 | MQL6A02 |
| 3 Check Valve | 0.70 | MQL6A03 |
| 4 Spring | 0.10 | MQL6A04 |
| 5 Air Distributor | 3.50 | MQL6A05 |
| 6 Internal Cylinder | 4.20 | MQL6A06 |
| 7 Piston | 23.00 | MQL6A07 |
| 8 External Cylinder | 30.00 | MQL6A08 |
| 9 Guided Sleeve | 4.00 | MQL6A09 |
| 10 "O" Ring of Stop Ring | 0.01 | MQL6A10 |
| 11 Stop Ring | 0.60 | MQL6A11 |
| 12 Drive Chuck | 5.50 | MQL6A12 |
| 13 Drill Bit | | MQL6A13 |

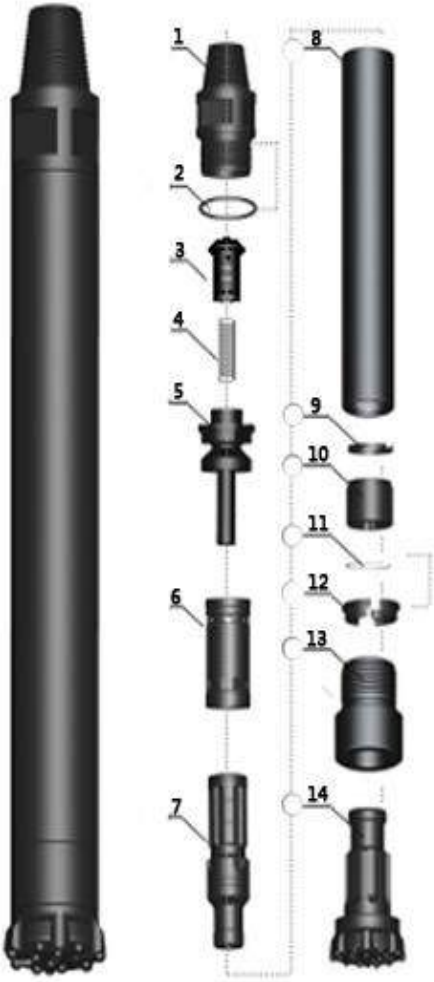
According to your request, the top sub can be made into two spanners, and put protection buttons. An air controlling hole can be drilled on the check valve to provide more efficient cuttings discharge.

Technical Date

| Length(Less bit) | Weight(Less bit) | External diameter | Bit Shank | Hole Range | Connection Thread |
|------------------|-----------------------|----------------------------|----------------------|-----------------------|-----------------------|
| 1183mm | 92.00Kg | ø148mm | QL60 | ø155-ø203 | API 3 1/2" Reg |
| Working Pressure | Impact rate at 1.7Mpa | Recommended rotation speed | Air Consumption | | |
| | | | 1.0Map | 1.8Mpa | 2.4Mpa |
| 1.0-3.0Mpa | 25HZ | 20-30r/min | 9m ³ /min | 18m ³ /min | 26m ³ /min |

MW7-A DTH HAMMER

High Air Pressure without foot valve DTH Hammers



| | Item Description | Weight (Kg) | Part Number |
|----|----------------------|-------------|-------------|
| 1 | Top Sub | 25.00 | MW7A01 |
| 2 | "O" Ring of Top Sub | 0.02 | MW7A02 |
| 3 | Check Valve | 0.70 | MW7A03 |
| 4 | Spring | 0.10 | MW7A04 |
| 5 | Air Distributor | 4.70 | MW7A05 |
| 6 | Internal Cylinder | 5.30 | MW7A06 |
| 7 | Piston | 33.50 | MW7A07 |
| 8 | External Cylinder | 42.00 | MW7A08 |
| 9 | Piston Retaining Rin | 0.30 | MW7A09 |
| 10 | Guided Sleeve | 5.45 | MW7A10 |
| 11 | Piston Retaining Rin | 0.10 | MW7A11 |
| 12 | Stop Ring | 1.29 | MW7A12 |
| 13 | Drive Chuck | 14.50 | MW7A13 |
| 14 | Drill Bit | | MW7A14 |

According to your request, the top sub can be made into two spanners, and put protection buttons. An air controlling hole can be drilled on the check valve to provide more efficient cuttings discharge.

Technical Date

| Length(Less bit) | Weight(Less bit) | External diameter | Bit Shank | Hole Range | Connection Thread |
|------------------|-----------------------|----------------------------|-----------------------|-----------------------|-----------------------|
| 1188mm | 115.00Kg | ø165mm | HK70A | ø175-ø216 | API 3 1/2" Reg |
| Working Pressure | Impact rate at 1.7Mpa | Recommended rotation speed | Air Consumption | | |
| | | | 1.0Map | 1.8Mpa | 2.4Mpa |
| 1.0-3.0Mpa | 25HZ | 20-30r/min | 11m ³ /min | 20m ³ /min | 27m ³ /min |

MD85A DTH HAMMER

High Air Pressure without foot valve DTH Hammers



| Item Description | Weight (Kg) | Part Number |
|--------------------------|-------------|-------------|
| 1 Top Sub | 34.00 | MD85A01 |
| 2 "O" Ring of Top Sub | 0.015 | MD85A02 |
| 3 Breakout Ring | 0.30 | MD85A03 |
| 4 Check Valve | 1.20 | MD85A04 |
| 5 Spring | 0.10 | MD85A05 |
| 6 Air Distributor | 6.00 | MD85A06 |
| 7 Internal Cylinder | 6.50 | MD85A07 |
| 8 Piston | 42.50 | MD85A08 |
| 9 External Cylinder | 60.00 | MD85A09 |
| 10 Guided Sleeve | 5.30 | MD85A10 |
| 11 "O" Ring of Stop Ring | 0.10 | MD85A11 |
| 12 Stop Ring | 1.20 | MD85A12 |
| 13 Breakout Ring | 0.30 | MD85A13 |
| 14 Drive Chuck | 17.50 | MD85A14 |
| 15 Drill Bit | | MD85A15 |

According to your request, the top sub can be made into two spanners, and put protection buttons. An air controlling hole can be drilled on the check valve to provide more efficient cuttings discharge.

Technical Date

| Length(Less bit) | Weight(Less bit) | External diameter | Bit Shank | Hole Range | Connection Thread |
|------------------|-----------------------|----------------------------|-----------------------|-----------------------|-----------------------|
| 1359mm | 175.00Kg | ø180mm | Cop84 DHD380 | ø195-ø254 | API 4 1/2" Reg |
| Working Pressure | Impact rate at 1.7Mpa | Recommended rotation speed | Air Consumption | | |
| | | | 1.0Map | 1.8Mpa | 2.4Mpa |
| 1.0-3.0Mpa | 22HZ | 15-25r/min | 12m ³ /min | 22m ³ /min | 28m ³ /min |

MSD8A DTH HAMMER

High Air Pressure without foot valve DTH Hammers



| Item Description | Weight (Kg) | Part Number |
|--------------------------|-------------|-------------|
| 1 Top Sub | 34.00 | MSD8A01 |
| 2 "O" Ring of Top Sub | 0.015 | MSD8A02 |
| 3 Breakout Ring | 0.30 | MSD8A03 |
| 4 Check Valve | 1.20 | MSD8A04 |
| 5 Spring | 0.10 | MSD8A05 |
| 6 Air Distributor | 6.00 | MSD8A06 |
| 7 Internal Cylinder | 6.50 | MSD8A07 |
| 8 Piston | 42.50 | MSD8A08 |
| 9 External Cylinder | 59.00 | MSD8A09 |
| 10 Guided Sleeve | 6.00 | MSD8A10 |
| 11 "O" Ring of Stop Ring | 0.01 | MSD8A11 |
| 12 Stop Ring | 1.20 | MSD8A12 |
| 13 Breakout Ring | 0.30 | MSD8A13 |
| 14 Drive Chuck | 16.00 | MSD8A14 |
| 15 Drill Bit | | MSD8A15 |

According to your request, the top sub can be made into two spanners, and put protection buttons. An air controlling hole can be drilled on the check valve to provide more efficient cuttings discharge.

Technical Date

| Length(Less bit) | Weight(Less bit) | External diameter | Bit Shank | Hole Range | Connection Thread |
|------------------|-----------------------|----------------------------|-----------------------|-----------------------|-----------------------|
| 1330mm | 174.00Kg | ø180mm | SD8 | ø195-ø254 | API 4 1/2" Reg |
| Working Pressure | Impact rate at 1.7Mpa | Recommended rotation speed | Air Consumption | | |
| | | | 1.0Map | 1.8Mpa | 2.4Mpa |
| 1.0-3.0Mpa | 22HZ | 15-25r/min | 12m ³ /min | 22m ³ /min | 28m ³ /min |

MQL8A DTH HAMMER

High Air Pressure without foot valve DTH Hammers



| Item Description | Weight (Kg) | Part Number |
|--------------------------|-------------|-------------|
| 1 Top Sub | 34.00 | MQL8A01 |
| 2 "O" Ring of Top Sub | 0.015 | MQL8A02 |
| 3 Breakout Ring | 0.30 | MQL8A03 |
| 4 Check Valve | 1.20 | MQL8A04 |
| 5 Spring | 0.10 | MQL8A05 |
| 6 Air Distributor | 6.00 | MQL8A06 |
| 7 Internal Cylinder | 6.50 | MQL8A07 |
| 8 Piston | 42.50 | MQL8A08 |
| 9 External Cylinder | 59.00 | MQL8A09 |
| 10 Guided Sleeve | 6.30 | MQL8A10 |
| 11 "O" Ring of Stop Ring | 0.01 | MQL8A11 |
| 12 Stop Ring | 1.40 | MQL8A12 |
| 13 Breakout Ring | 0.30 | MQL8A13 |
| 14 Drive Chuck | 13.00 | MQL8A14 |
| 15 Drill Bit | | MQL8A15 |

According to your request, the top sub can be made into two spanners, and put protection buttons. An air controlling hole can be drilled on the check valve to provide more efficient cuttings discharge.

Technical Date

| Length(Less bit) | Weight(Less bit) | External diameter | Bit Shank | Hole Range | Connection Thread |
|------------------|-----------------------|----------------------------|-----------------------|-----------------------|-----------------------|
| 1330mm | 171.00Kg | ø185mm | QL80 | ø195-ø254 | API 4 1/2" Reg |
| Working Pressure | Impact rate at 1.7Mpa | Recommended rotation speed | Air Consumption | | |
| | | | 1.0Map | 1.8Mpa | 2.4Mpa |
| 1.0-3.0Mpa | 22HZ | 15-25r/min | 12m ³ /min | 22m ³ /min | 28m ³ /min |

MQL95A DTH HAMMER

High Air Pressure without foot valve DTH Hammers



| | Item Description | Weight (Kg) | Part Number |
|----|-----------------------|-------------|-------------|
| 1 | Top Sub | 35.00 | MQL95A01 |
| 2 | "O" Ring of Top Sub | 0.010 | MQL95A02 |
| 3 | Breakout Ring | 0.40 | MQL95A03 |
| 4 | Check Valve | 1.20 | MQL95A04 |
| 5 | Spring | 0.10 | MQL95A05 |
| 6 | Air Distributor | 7.00 | MQL95A06 |
| 7 | Internal Cylinder | 7.50 | MQL95A07 |
| 8 | Piston | 48.00 | MQL95A08 |
| 9 | External Cylinder | 75.00 | MQL95A09 |
| 10 | Guided Sleeve | 12.00 | MQL95A10 |
| 11 | "O" Ring of Stop Ring | 0.01 | MQL95A11 |
| 12 | Stop Ring | 1.70 | MQL95A12 |
| 13 | Breakout Ring | 0.40 | MQL95A13 |
| 14 | Drive Chuck | 15.00 | MQL95A14 |
| 15 | Drill Bit | | MQL95A15 |

According to your request, the top sub can be made into two spanners, and put protection buttons. An air controlling hole can be drilled on the check valve to provide more efficient cuttings discharge.

Technical Date

| Length(Less bit) | Weight(Less bit) | External diameter | Bit Shank | Hole Range | Connection Thread |
|------------------|-----------------------|----------------------------|-----------------------|-----------------------|-----------------------|
| 1340mm | 203.00Kg | ø203mm | QL80 | ø216-ø254 | API 4 1/2" Reg |
| Working Pressure | Impact rate at 1.7Mpa | Recommended rotation speed | Air Consumption | | |
| | | | 1.0Map | 1.8Mpa | 2.4Mpa |
| 1.0-3.0Mpa | 22HZ | 15-25r/min | 16m ³ /min | 28m ³ /min | 39m ³ /min |

MSD10A DTH HAMMER

High Air Pressure without foot valve DTH Hammers



| | Item Description | Weight (Kg) | Part Number |
|----|-----------------------|-------------|-------------|
| 1 | Top Sub | 59.00 | MSD10A01 |
| 2 | "O" Ring of Top Sub | 0.030 | MSD10A02 |
| 3 | Breakout Ring | 0.50 | MSD10A03 |
| 4 | Check Valve | 1.40 | MSD10A04 |
| 5 | Spring | 0.30 | MSD10A05 |
| 6 | Air Distributor | 10.50 | MSD10A06 |
| 7 | Internal Cylinder | 12.50 | MSD10A07 |
| 8 | Piston | 77.00 | MSD10A08 |
| 9 | External Cylinder | 110.00 | MSD10A09 |
| 10 | Guided Sleeve | 11.50 | MSD10A10 |
| 11 | "O" Ring of Stop Ring | 0.01 | MSD10A11 |
| 12 | Stop Ring | 1.50 | MSD10A12 |
| 13 | Breakout Ring | 0.50 | MSD10A13 |
| 14 | Drive Chuck | 31.50 | MSD10A14 |
| 15 | Drill Bit | | MSD10A15 |

According to your request, the top sub can be made into two spanners, and put protection buttons. An air controlling hole can be drilled on the check valve to provide more efficient cuttings discharge.

Technical Date

| Length(Less bit) | Weight(Less bit) | External diameter | Bit Shank | Hole Range | Connection Thread |
|------------------|-----------------------|----------------------------|-----------------------|-----------------------|-----------------------|
| 1525mm | 316.00Kg | ø225mm | SD10 | ø254-ø311 | API 6 5/8" Reg |
| Working Pressure | Impact rate at 2.4Mpa | Recommended rotation speed | Air Consumption | | |
| | | | 1.0Map | 1.8Mpa | 2.4Mpa |
| 1.0-3.0Mpa | 20HZ | 15-25r/min | 22m ³ /min | 40m ³ /min | 65m ³ /min |

MN100A DTH HAMMER

High Air Pressure without foot valve DTH Hammers



| | Item Description | Weight (Kg) | Part Number |
|----|-----------------------|-------------|-------------|
| 1 | Top Sub | 59.00 | MN100A01 |
| 2 | "O" Ring of Top Sub | 0.03 | MN100A02 |
| 3 | Breakout Ring | 0.40 | MN100A03 |
| 4 | Check Valve | 1.60 | MN100A04 |
| 5 | Spring | 0.30 | MN100A05 |
| 6 | Air Distributor | 0.60 | MN100A06 |
| 7 | Internal Cylinder | 11.50 | MN100A07 |
| 8 | Piston | 11.00 | MN100A08 |
| 9 | External Cylinder | 62.00 | MN100A09 |
| 10 | Guided Sleeve | 112.00 | MN100A10 |
| 11 | "O" Ring of Stop Ring | 0.03 | MN100A11 |
| 12 | Stop Ring | 1.50 | MN100A12 |
| 13 | Breakout Ring | 0.40 | MN100A13 |
| 14 | Drive Chuck | 26.00 | MN100A14 |
| 15 | Drill Bit | | MN100A15 |

According to your request, the top sub can be made into two spanners, and put protection buttons. An air controlling hole can be drilled on the check valve to provide more efficient cuttings discharge.

Technical Date

| Length(Less bit) | Weight(Less bit) | External diameter | Bit Shank | Hole Range | Connection Thread |
|------------------|-----------------------|----------------------------|-----------------------|-----------------------|-----------------------|
| 1510mm | 288.00Kg | ø225mm | NUMA100 | ø254-ø311 | API 6 5/8" Reg |
| Working Pressure | Impact rate at 1.7Mpa | Recommended rotation speed | Air Consumption | | |
| | | | 1.0Map | 1.8Mpa | 2.4Mpa |
| 1.0-3.0Mpa | 18HZ | 15-25r/min | 22m ³ /min | 45m ³ /min | 60m ³ /min |

MD1120A DTH HAMMER

High Air Pressure without foot valve DTH Hammers



| | Item Description | Weight (Kg) | Part Number |
|----|-----------------------|-------------|-------------|
| 1 | Top Sub | 70.00 | MD1120A01 |
| 2 | "O" Ring of Top Sub | 0.04 | MD1120A02 |
| 3 | Breakout Ring | 0.80 | MD1120A03 |
| 4 | Check Valve | 2.00 | MD1120A04 |
| 5 | Spring | 0.10 | MD1120A05 |
| 6 | Air Distributor | 16.00 | MD1120A06 |
| 7 | Internal Cylinder | 25.00 | MD1120A07 |
| 8 | Piston | 113.00 | MD1120A08 |
| 9 | External Cylinder | 173.00 | MD1120A09 |
| 10 | Guided Sleeve | 24.00 | MD1120A10 |
| 11 | "O" Ring of Stop Ring | 0.01 | MD1120A11 |
| 12 | Stop Ring | 4.00 | MD1120A12 |
| 13 | Breakout Ring | 0.80 | MD1120A13 |
| 14 | Drive Chuck | 46.00 | MD1120A14 |
| 15 | Drill Bit | | MD1120A15 |

According to your request, the top sub can be made into two spanners, and put protection buttons. An air controlling hole can be drilled on the check valve to provide more efficient cuttings discharge.

Technical Date

| Length(Less bit) | Weight(Less bit) | External diameter | Bit Shank | Hole Range | Connection Thread |
|------------------|-----------------------|----------------------------|-----------------------|-----------------------|-----------------------|
| 1880mm | 474.00Kg | ø275mm | DHD1120 | ø305-ø445 | API 6 5/8" Reg |
| Working Pressure | Impact rate at 1.7Mpa | Recommended rotation speed | Air Consumption | | |
| | | | 1.0Map | 1.8Mpa | 2.4Mpa |
| 1.0-3.0Mpa | 20HZ | 15-25r/min | 28m ³ /min | 50m ³ /min | 71m ³ /min |

MSD12A DTH HAMMER

High Air Pressure without foot valve DTH Hammers



| | Item Description | Weight (Kg) | Part Number |
|----|-----------------------|-------------|-------------|
| 1 | Top Sub | 70.00 | MSD12A01 |
| 2 | "O" Ring of Top Sub | 0.040 | MSD12A02 |
| 3 | Breakout Ring | 0.80 | MSD12A03 |
| 4 | Check Valve | 2.00 | MSD12A04 |
| 5 | Spring | 0.10 | MSD12A05 |
| 6 | Air Distributor | 16.00 | MSD12A06 |
| 7 | Internal Cylinder | 25.00 | MSD12A07 |
| 8 | Piston | 113.00 | MSD12A08 |
| 9 | External Cylinder | 175.00 | MSD12A09 |
| 10 | Guided Sleeve | 25.00 | MSD12A10 |
| 11 | "O" Ring of Stop Ring | 0.01 | MSD12A11 |
| 12 | Stop Ring | 1.50 | MSD12A12 |
| 13 | Breakout Ring | 0.80 | MSD12A13 |
| 14 | Drive Chuck | 48.00 | MSD12A14 |
| 15 | Drill Bit | | MSD12A15 |

According to your request, the top sub can be made into two spanners, and put protection buttons. An air controlling hole can be drilled on the check valve to provide more efficient cuttings discharge.

Technical Date

| Length(Less bit) | Weight(Less bit) | External diameter | Bit Shank | Hole Range | Connection Thread |
|------------------|-----------------------|----------------------------|-----------------------|-----------------------|-----------------------|
| 1860mm | 480.00Kg | ø275mm | SD12 | ø305-ø445 | API 6 5/8" Reg |
| Working Pressure | Impact rate at 1.7Mpa | Recommended rotation speed | Air Consumption | | |
| | | | 1.0Map | 1.8Mpa | 2.4Mpa |
| 1.0-3.0Mpa | 20HZ | 15-25r/min | 28m ³ /min | 50m ³ /min | 71m ³ /min |

MN125A DTH HAMMER

High Air Pressure without foot valve DTH Hammers



| | Item Description | Weight (Kg) | Part Number |
|----|-----------------------|-------------|-------------|
| 1 | Top Sub | 70.00 | MN125A01 |
| 2 | "O" Ring of Top Sub | 0.04 | MN125A02 |
| 3 | Breakout Ring | 0.80 | MN125A03 |
| 4 | Check Valve | 2.00 | MN125A04 |
| 5 | Spring | 0.10 | MN125A05 |
| 6 | Air Distributor | 16.00 | MN125A06 |
| 7 | Internal Cylinder | 25.00 | MN125A07 |
| 8 | Piston | 113.00 | MN125A08 |
| 9 | External Cylinder | 170.00 | MN125A09 |
| 10 | Guided Sleeve | 23.00 | MN125A10 |
| 11 | "O" Ring of Stop Ring | 0.01 | MN125A11 |
| 12 | Stop Ring | 4.00 | MN125A12 |
| 13 | Breakout Ring | 0.80 | MN125A13 |
| 14 | Drive Chuck | 45.00 | MN125A14 |
| 15 | Drill Bit | | MN125A15 |

According to your request, the top sub can be made into two spanners, and put protection buttons. An air controlling hole can be drilled on the check valve to provide more efficient cuttings discharge.

Technical Date

| Length(Less bit) | Weight(Less bit) | External diameter | Bit Shank | Hole Range | Connection Thread |
|------------------|-----------------------|----------------------------|-----------------------|-----------------------|-----------------------|
| 1880mm | 470.00Kg | ø275mm | NUMA125 | ø305-ø445 | API 6 5/8" Reg |
| Working Pressure | Impact rate at 1.7Mpa | Recommended rotation speed | Air Consumption | | |
| | | | 1.0Map | 1.8Mpa | 2.4Mpa |
| 1.0-3.0Mpa | 20HZ | 15-25r/min | 28m ³ /min | 50m ³ /min | 71m ³ /min |

The Characteristics Of Big Size DTH Hammer

-Using In Water Wells, Oil, Gas, and Construction Drilling

Based on the characteristics of the wells, oil, gas, and construction drilling, our company self-designed, developed and manufactured this kind of high air pressure DTH hammer.

It has the following characteristics:

- ◆ Using the latest rock drilling theory, optimizing the inside structure and the size of the air distribution, to make the DTH Hammer obtain the optimal energy transfer and make it achieve faster drilling speed and lower air consumption.
- ◆ For such projects as the drill bit break, retrieving very difficult, we specially designed a safe and reliable anti shedding device for the bit.
- ◆ The check valve can be replaced to the one with bigger air controlling hole to provide more efficient cutting discharge.
- ◆ The top sub and the drive chunk have special thread, which can achieve an easier disassemble.

Explanation of product code

Example One: MD18A

M— Maxdrill (Our company name)

D—Down The Hole

330—The O.D. of hammer is 330mm

A—Using without foot valve DTH Bit

MD330A DTH HAMMER

High Air Pressure without foot valve DTH Hammers



| Item Description | Weight (Kg) | Part Number |
|--------------------------|-------------|-------------|
| 1 Top Sub | 320.00 | MD330A01 |
| 2 "O" Ring of Top Sub | 0.10 | MD330A02 |
| 3 Breakout Ring | 2.00 | MD330A03 |
| 4 Check Valve | 5.00 | MD330A04 |
| 5 Spring | 0.80 | MD330A05 |
| 6 Air Distributor | 35.00 | MD330A06 |
| 7 Internal Cylinder | 30.00 | MD330A07 |
| 8 Piston | 190.00 | MD330A08 |
| 9 External Cylinder | 316.00 | MD330A09 |
| 10 Guided Sleeve | 38.00 | MD330A10 |
| 11 "O" Ring of Stop Ring | 0.05 | MD330A11 |
| 12 Stop Ring | 6.00 | MD330A12 |
| 13 Breakout Ring | 2.00 | MD330A13 |
| 14 Drive Chuck | 64.00 | MD330A14 |
| 15 Retainer | 42.00 | MD330A15 |
| 16 Drill Bit | | MD330A16 |

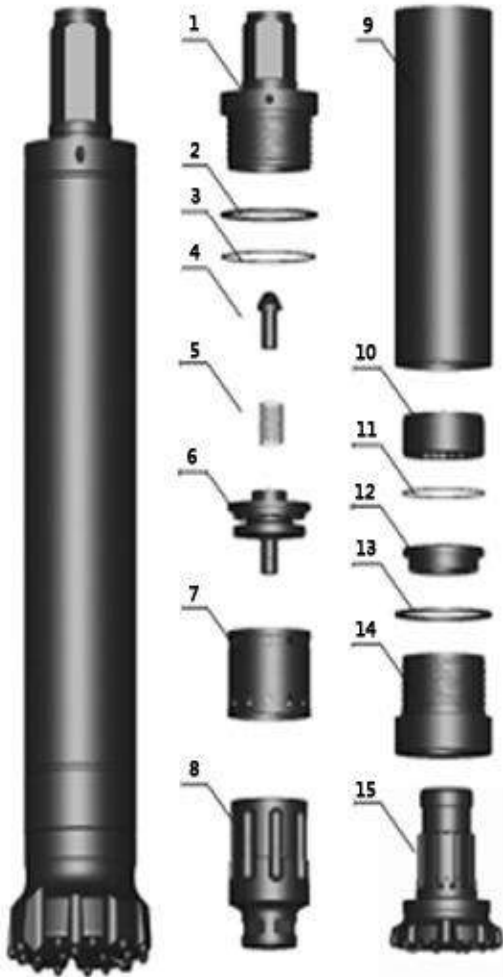
According to your request, the top sub can be made into two spanners, and put protection buttons. An air controlling hole can be drilled on the check valve to provide more efficient cuttings discharge.

Technical Date

| Length(Less bit) | Weight(Less bit) | External diameter | Bit Shank | Hole Range | Connection Thread |
|------------------|-----------------------|----------------------------|-----------------------|-----------------------|-----------------------|
| 3870mm | 1050.00Kg | ø330mm | HD330 | ø350-ø660 | API 7 5/8" Reg |
| Working Pressure | Impact rate at 2.4Mpa | Recommended rotation speed | Air Consumption | | |
| | | | 1.0Map | 1.8Mpa | 2.4Mpa |
| 1.0-2.5Mpa | 20HZ | 15-25r/min | 32m ³ /min | 58m ³ /min | 85m ³ /min |

MD450A DTH HAMMER

High Air Pressure without foot valve DTH Hammers



| Item Description | Weight (Kg) | Part Number |
|--------------------------|-------------|-------------|
| 1 Top Sub | 302.00 | MD450A01 |
| 2 "O" Ring | 0.03 | MD450A02 |
| 3 Breakout Ring | 3.50 | MD450A03 |
| 4 Check Valve | 6.80 | MD450A04 |
| 5 Spring | 1.50 | MD450A05 |
| 6 Distributor | 81.30 | MD450A06 |
| 7 Inner Cylinder | 39.10 | MD450A07 |
| 8 Piston | 346.50 | MD450A08 |
| 9 Piston Case | 508.00 | MD450A09 |
| 10 Bush Drive Sub | 64.60 | MD450A10 |
| 11 Piston Retaining Ring | 0.50 | MD450A11 |
| 12 Bit Retaining Ring | 24.50 | MD450A12 |
| 13 Breakout Ring | 3.50 | MD450A13 |
| 14 Drive Sub | 181.00 | MD450A14 |
| 15 Drill Bit | | MD450A15 |

According to your request, the top sub can be made into two spanners, and put protection buttons. An air controlling hole can be drilled on the check valve to provide more efficient cuttings discharge.

Technical Date

| Length(Less bit) | Weight(Less bit) | External diameter | Bit Shank | Hole Range | Connection Thread |
|------------------|-----------------------|----------------------------|-----------------|------------|---------------------------|
| 2195mm | 1450.00Kg | ø450mm | HD450 | ø550-ø700 | According to your request |
| Working Pressure | Impact rate at 2.4Mpa | Recommended rotation speed | Air Consumption | | |
| | | | 1.0Mpa | 1.8Mpa | 2.4Mpa |
| 1.0-2.5Mpa | 20HZ | 15-25r/min | 40m³/min | 65m³/min | 90m³/min |

MD525A DTH HAMMER

High Air Pressure without foot valve DTH Hammers



| Item Description | Weight (Kg) | Part Number |
|--------------------------|-------------|-------------|
| 1 Top Sub | 650.00 | MD525A01 |
| 2 "O" Ring | 0.04 | MD525A02 |
| 3 Breakout Ring | 5.00 | MD525A03 |
| 4 Check Valve | 8.50 | MD525A04 |
| 5 Spring | 1.80 | MD525A05 |
| 6 Distributor | 102.50 | MD525A06 |
| 7 Inner Cylinder | 56.50 | MD525A07 |
| 8 Piston | 620.00 | MD525A08 |
| 9 Piston Case | 1095.00 | MD525A09 |
| 10 Bush Drive Sub | 95.00 | MD525A10 |
| 11 Piston Retaining Ring | 0.80 | MD525A11 |
| 12 Bit Retaining Ring | 35.50 | MD525A12 |
| 13 Breakout Ring | 5.00 | MD525A13 |
| 14 Drive Sub | 219.00 | MD525A14 |
| 15 Drill Bit | | MD525A15 |

According to your request, the top sub can be made into two spanners, and put protection buttons. An air controlling hole can be drilled on the check valve to provide more efficient cuttings discharge.

Technical Date

| Length(Less bit) | Weight(Less bit) | External diameter | Bit Shank | Hole Range | Connection Thread |
|------------------|-----------------------|----------------------------|-----------------------|-----------------------|---------------------------|
| 2650mm | 2895.00Kg | ø525mm | HD525 | ø610-ø800 | According to your request |
| Working Pressure | Impact rate at 2.4Mpa | Recommended rotation speed | Air Consumption | | |
| | | | 1.0Map | 1.8Mpa | 2.4Mpa |
| 1.0-2.5Mpa | 20HZ | 15-25r/min | 50m ³ /min | 80m ³ /min | 99m ³ /min |

Bit Face Shape Selection



Drop Center For high penetration rates in soft to medium hard and fissured rock formations. Low to medium air pressures. Maximum hole deviation control.



Concave Face The all-round application bit face specifically for medium hard and homogeneous rock formations. Good hole deviation control and good flushing capacity.



Convex Face For high penetration rates in soft to medium-hard with low to medium air pressures. It is the most resistance to steel wash, and may reduce the load and wear on the gauge buttons, but poor hole deviation control.

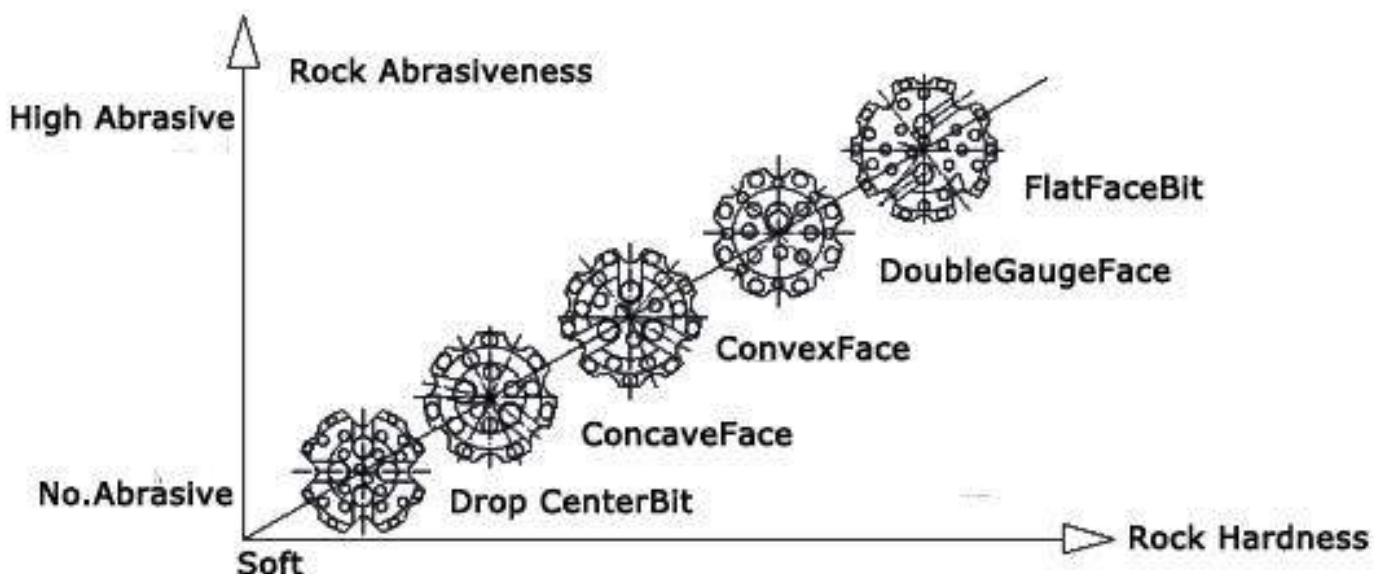


Double Gauge Face This kind of face shape is suitable for fast penetration rates in medium to hard rock formations. Designed for high air pressures and good resistance to steel wash step gauge bit.



Flat Face This kind of face shape is suitable for hard to very hard and abrasive rock formations in applications with high air pressures. Good penetration rates and resistance to steel wash.

Technical Date



Carbide Button Shape Selection



Domed/ Round Button

Domed/ Round Buttons are usually used as gauge buttons of DTH Bits, suitable for very abrasive and very hard formations.



Parabolic/Semi-Ballistic Button

Parabolic Buttons are usually used as gauge buttons and front buttons of DTH Bits, suitable for medium abrasive and hard formations.



Ballistic Button

Ballistic Buttons are usually used as front buttons of DTH Bits, suitable for medium abrasive and medium hard formations. They can also be used as gauge buttons if the rock is soft.



Sharp Button

Sharp Buttons are usually used as front buttons of DTH Bits for soft formations where fast penetration rates are possible and button breakage is minimal.



Flat Button

Flat Buttons are usually used as protection buttons to reduce wear on rubbing surfaces of DTH Bits.

1" BIT Data Referenced By BR1 Flat Face Bit



Specification Of Products:BR1

| Diameter | | No × Button diameter, mm | | Button angle° | Flushing holes | Weight (Kg) | Part No |
|----------|-------|--------------------------|---------------|---------------|----------------|-------------|---------|
| mm | inch | Gauge Buttons | Front Buttons | | | | |
| 57 | 2 1/4 | 6×9 | 2×8 | 38 | 2 | 1.6 | BR1-57 |
| 64 | 2 1/2 | 6×10 | 3×10 | 38 | 2 | 1.8 | BR1-64 |
| 70 | 2 3/4 | 6×12 | 4×10 | 38 | 2 | 2.1 | BR1-70 |
| 76 | 3 | 6×12 | 4×10 | 38 | 2 | 2.4 | BR1-76 |

2" BIT Data Referenced By HD25 Flat Face Bit



Specification Of Products:HD25

Specification Of Products:BR2

| Diameter | | No × Button diameter, mm | | Button angle° | Flushing holes | Weight (Kg) | Part No |
|----------|--------|--------------------------|---------------|---------------|----------------|-------------|---------|
| mm | inch | Gauge Buttons | Front Buttons | | | | |
| 76 | 3 | 6×13 | 4×10 | 38 | 2 | 3.3 | HD25-76 |
| 80 | 3 1/8 | 6×14 | 4×11 | 38 | 2 | 3.4 | HD25-80 |
| 82 | 3 1/4 | 6×14 | 4×11 | 38 | 2 | 3.5 | HD25-82 |
| 90 | 3 9/16 | 6×12 | 5×12 | 38 | 2 | 3.7 | HD25-90 |

3" BIT Data Referenced By HD35 Flat Face Bit



**Specification Of Products:HD35
IR3.5 COP34**



Specification Of Products:M30



Specification Of Products:COP32



Specification Of Products:QL30



Specification Of Products:BR3

| Diameter | | No × Button diameter, mm | | Button angle° | Flushing holes | Weight (Kg) | Part No |
|----------|---------|--------------------------|---------------|---------------|----------------|-------------|----------|
| mm | inch | Gauge Buttons | Front Buttons | | | | |
| 90 | 3 9/16 | 8×12 | 7×11 | 38 | 2 | 4.6 | HD35-90 |
| 92 | 3 5/8 | 8×12 | 7×11 | 38 | 2 | 4.6 | HD35-92 |
| 95 | 3 3/4 | 8×12 | 7×11 | 38 | 2 | 4.7 | HD35-95 |
| 100 | 3 15/16 | 8×12 | 7×12 | 38 | 2 | 4.8 | HD35-100 |
| 105 | 4 1/8 | 8×14 | 7×12 | 38 | 2 | 5.0 | HD35-105 |
| 110 | 4 5/16 | 8×14 | 7×12 | 38 | 2 | 5.5 | HD35-110 |

4" BIT Data Referenced By HD45 Flat Face Bit



**Specification Of Products:HD45
DHD340A COP44**



Specification Of Products:M40



Specification Of Products:SD4



Specification Of Products:QL40

| Diameter | | No × Button diameter, mm | | Button angle° | Flushing holes | Weight (Kg) | Part No |
|----------|---------|--------------------------|---------------|---------------|----------------|-------------|----------|
| mm | inch | Guage Buttons | Front Buttons | | | | |
| 105 | 4 1/8 | 8×14 | 7×12 | 38 | 2 | 7.6 | HD45-105 |
| 110 | 4 5/16 | 8×14 | 7×12 | 38 | 2 | 7.8 | HD45-110 |
| 115 | 4 1/2 | 8×14 | 7×13 | 38 | 2 | 8.2 | HD45-115 |
| 120 | 4 3/4 | 8×14 | 8×13 | 38 | 2 | 8.7 | HD45-120 |
| 125 | 4 15/16 | 8×14 | 10×13 | 38 | 2 | 8.9 | HD45-125 |
| 130 | 5 1/8 | 8×16 | 8×14 | 38 | 2 | 9.4 | HD45-130 |

5" BIT Data Referenced By HD55 Flat Face Bit



**Specification Of Products:HD55
DHD350R COP54**



Specification Of Products:M50



Specification Of Products:SD5



Specification Of Products:QL50

| Diameter | | No × Button diameter,mm | | Button angle° | Flushing holes | Weight (Kg) | Part No |
|----------|-------|-------------------------|---------------|---------------|----------------|-------------|----------|
| mm | inch | Gauge Buttons | Front Buttons | | | | |
| 130 | 5 1/8 | 8× 16 | 8× 14 | 38 | 2 | 15 | HD55-130 |
| 135 | 5 1/4 | 8× 16 | 8× 14 | 38 | 2 | 15.2 | HD55-135 |
| 138 | 5 1/2 | 8× 16 | 10× 14 | 38 | 2 | 15.6 | HD55-138 |
| 140 | 5 1/2 | 8× 16 | 10× 14 | 38 | 2 | 15.8 | HD55-140 |
| 146 | 5 3/4 | 8× 18 | 8× 15 | 38 | 2 | 16.1 | HD55-146 |
| 150 | 5 7/8 | 8× 18 | 8× 15 | 38 | 2 | 16.5 | HD55-150 |
| 152 | 6 | 8× 18 | 8× 15 | 38 | 2 | 17 | HD55-152 |
| 156 | 6 1/8 | 8× 18 | 8× 16 | 38 | 2 | 17.5 | HD55-156 |

6" BIT Data Referenced By HD65 Concave Face Bit



**Specification Of Products:HD65
DHD360R COP64**



Specification Of Products:M60



Specification Of Products:SD6



Specification Of Products:QL60

| Diameter | | No × Button diameter, mm | | Button angle° | Flushing holes | Weight (Kg) | Part No |
|----------|-------|--------------------------|---------------|---------------|----------------|-------------|----------|
| mm | inch | Gauge Buttons | Front Buttons | | | | |
| 152 | 6 | 8×18 | 4×16+4×14 | 38 | 2 | 23 | HD65-152 |
| 154 | 6 | 8×18 | 4×16+4×14 | 38 | 2 | 23 | HD65-154 |
| 156 | 6 1/4 | 8×18 | 4×16+4×14 | 38 | 2 | 23 | HD65-156 |
| 159 | 6 1/4 | 8×18 | 4×16+4×14 | 38 | 2 | 23.5 | HD65-159 |
| 165 | 6 1/2 | 8×18 | 8×16 | 38 | 2 | 24 | HD65-165 |
| 171 | 6 3/4 | 8×18 | 8×16 | 38 | 2 | 25 | HD65-171 |
| 178 | 7 | 8×18 | 10×16 | 38 | 2 | 26 | HD65-178 |
| 185 | 7 1/4 | 8×18 | 10×16 | 38 | 2 | 26.8 | HD65-185 |
| 190 | 7 1/2 | 10×18 | 13×16 | 38 | 2 | 27.5 | HD65-190 |
| 203 | 8 | 10×18 | 8×18+6×16 | 38 | 2 | 31 | HD65-203 |

8" BIT Data Referenced By HD85 Concave Face Bit



**Specification Of Products:HD85
DHD380 COP84**



Specification Of Products:M80



Specification Of Products:SD8



Specification Of Products:QL80

| Diameter | | No × Button diameter, mm | | Button angle ^o | Flushing holes | Weight (Kg) | Part No |
|----------|--------|--------------------------|---------------|---------------------------|----------------|-------------|----------|
| mm | inch | Gauge Buttons | Front Buttons | | | | |
| 200 | 7 7/8 | 10×18 | 8×18+6×16 | 38 | 2 | 46 | HD85-200 |
| 203 | 8 | 10×18 | 8×18+6×16 | 38 | 2 | 47 | HD85-203 |
| 216 | 8 1/2 | 10×18 | 8×18+6×16 | 38 | 2 | 53 | HD85-216 |
| 219 | 8 5/8 | 10×18 | 8×18+6×16 | 38 | 2 | 54 | HD85-219 |
| 222 | 8 3/4 | 10×18 | 8×18+6×16 | 38 | 2 | 55 | HD85-222 |
| 225 | 8 7/8 | 10×18 | 8×18+7×16 | 38 | 2 | 56 | HD85-225 |
| 229 | 9 | 10×18 | 8×18+7×16 | 38 | 2 | 57 | HD85-229 |
| 235 | 9 1/4 | 12×18 | 30×16 | 38 | 2 | 57.5 | HD85-235 |
| 240 | 9 1/2 | 12×18 | 30×16 | 38 | 2 | 58 | HD85-240 |
| 254 | 10 | 12×18 | 12×18+8×16 | 38 | 2 | 61 | HD85-254 |
| 270 | 10 5/8 | 12×19 | 20×18+8×16 | 38 | 2 | 66 | HD85-270 |
| 279 | 11 | 12×19 | 20×18+9×16 | 38 | 3 | 71 | HD85-279 |

10" BIT Data Referenced By SD10 Concave Face Bit



Specification Of Products:SD10



Specification Of Products:NUMA100

| Diameter | | No × Button diameter, mm | | Button angle° | Flushing holes | Weight (Kg) | Part No |
|----------|--------|--------------------------|---------------|---------------|----------------|-------------|----------|
| mm | inch | Gauge Buttons | Front Buttons | | | | |
| 254 | 10 | 12×18 | 12×18+8×16 | 38 | 2 | 85 | SD10-254 |
| 270 | 10 5/8 | 12×19 | 20×18+8×16 | 38 | 2 | 88 | SD10-270 |
| 279 | 11 | 12×19 | 20×18+9×16 | 38 | 2 | 91 | SD10-279 |
| 295 | 11 5/8 | 12×19 | 20×18+9×16 | 38 | 2 | 95 | SD10-295 |
| 305 | 12 | 15×19 | 27×18+9×16 | 38 | 3 | 97 | SD10-305 |
| 311 | 12 1/4 | 15×19 | 27×18+9×16 | 38 | 3 | 99 | SD10-311 |
| 315 | 12 3/8 | 15×19 | 27×18+9×16 | 38 | 3 | 102 | SD10-315 |
| 330 | 13 | 15×19 | 27×18+9×16 | 38 | 3 | 114 | SD10-330 |

12" BIT Data Referenced By SD12 Concave Face Bit



Specification Of Products:SD12



Specification Of Products:DHD1120



Specification Of Products:NUMA120



Specification Of Products:NUMA125

| Diameter | | No × Button diameter, mm | | Button angle° | Flushing holes | Weight (Kg) | Part No |
|----------|--------|--------------------------|---------------|---------------|----------------|-------------|----------|
| mm | inch | Gauge Buttons | Front Buttons | | | | |
| 305 | 12 | 15×19 | 36×18 | 38 | 3 | 130 | SD12-305 |
| 311 | 12 1/4 | 15×19 | 36×18 | 38 | 3 | 132 | SD12-311 |
| 315 | 12 3/8 | 15×19 | 42×18 | 38 | 3 | 136 | SD12-315 |
| 330 | 13 | 15×19 | 42×18 | 38 | 3 | 140 | SD12-330 |
| 343 | 13 1/2 | 15×19 | 42×18 | 38 | 3 | 145 | SD12-343 |
| 350 | 13 3/4 | 15×19 | 44×18 | 38 | 3 | 148 | SD12-350 |
| 356 | 14 | 15×19 | 44×18 | 38 | 3 | 150 | SD12-356 |
| 368 | 14 1/2 | 15×19 | 40×19 | 38 | 3 | 156 | SD12-368 |
| 375 | 14 3/4 | 15×19 | 40×19 | 38 | 3 | 160 | SD12-375 |
| 381 | 15 | 15×19 | 40×19 | 38 | 3 | 164 | SD12-381 |

15"BIT Data Referenced By HD330 Concave Face Bit



Specification Of Products:HD330

| Diameter | | No × Button diameter, mm | | Button angle° | Flushing holes | Weight (Kg) | Part No |
|----------|--------|--------------------------|---------------|---------------|----------------|-------------|-----------|
| mm | inch | Gauge Buttons | Front Buttons | | | | |
| 381 | 15 | 15×19 | 40×19 | 38 | 3 | 237 | HD330-381 |
| 391 | 15 3/8 | 15×19 | 40×19 | 38 | 3 | 244 | HD330-391 |
| 413 | 16 1/4 | 15×19 | 44×19 | 38 | 3 | 232 | HD330-413 |
| 435 | 17 1/8 | 18×19 | 44×19 | 38 | 3 | 282 | HD330-435 |
| 438 | 17 1/4 | 18×19 | 44×19 | 38 | 3 | 282 | HD330-438 |
| 445 | 17 1/2 | 18×19 | 44×19 | 38 | 3 | 282 | HD330-445 |
| 451 | 17 3/4 | 18×19 | 44×19 | 35 | 3 | 289 | HD330-451 |
| 457 | 18 | 18×25.4 | 47×19 | 35 | 3 | 295 | HD330-457 |
| 464 | 18 1/4 | 18×25.4 | 47×19 | 35 | 3 | 299 | HD330-464 |
| 483 | 19 | 20×25.4 | 57×19 | 35 | 3 | 330 | HD330-483 |
| 508 | 20 | 20×25.4 | 61×19 | 35 | 3 | 342 | HD330-508 |

20" BIT Data Referenced By HD450 Concave Face Bit



Specification Of Products:HD450

| Diameter | | No ×Button diameter,mm | | Button angle° | Flushing holes | Weight (Kg) | Part No |
|----------|--------|------------------------|---------------|---------------|----------------|-------------|-----------|
| mm | inch | Guage Btuttons | Front Buttons | | | | |
| 483 | 19 | 20×25.4 | 57×19 | 35 | 3 | 330 | HD450-483 |
| 508 | 20 | 20×25.4 | 61×19 | 35 | 3 | 342 | HD450-508 |
| 560 | 22 | 16×25.4 | 50×25.4 | 35 | 4 | 523 | HD450-560 |
| 578 | 22 3/4 | 16×25.4 | 50×25.4 | 35 | 4 | 505 | HD450-578 |
| 610 | 24 | 16×25.4 | 59×25.4 | 35 | 4 | 545 | HD450-610 |
| 660 | 26 | 24×25.4 | 69×25.4 | 35 | 6 | 610 | HD450-660 |

24" BIT Data Referenced By HD525 Concave Face Bit



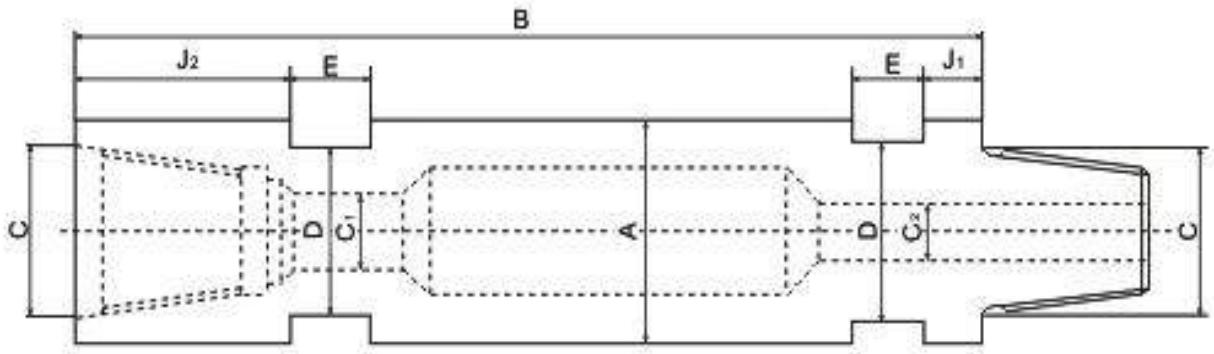
Specification Of Products:HD525

| Diameter | | No × Button diameter, mm | | Button angle° | Flushing holes | Weight (Kg) | Part No |
|----------|--------|--------------------------|---------------|---------------|----------------|-------------|-----------|
| mm | inch | Gauge Buttons | Front Buttons | | | | |
| 610 | 24 | 16×25.4 | 59×25.4 | 35 | 4 | 545 | HD525-610 |
| 660 | 26 | 24×25.4 | 69×25.4 | 35 | 6 | 608 | HD525-660 |
| 724 | 28 1/2 | 24×25.4 | 69×25.4 | 35 | 6 | 990 | HD525-724 |
| 737 | 29 | 24×25.4 | 69×25.4 | 35 | 6 | 980 | HD525-737 |
| 762 | 30 | 24×25.4 | 73×25.4 | 35 | 6 | 1020 | HD525-762 |
| 864 | 34 | 24×25.4 | 96×25.4 | 35 | 6 | 1200 | HD525-864 |
| 914 | 36 | 24×25.4 | 108×25.4 | 35 | 6 | 1280 | HD525-914 |

The others

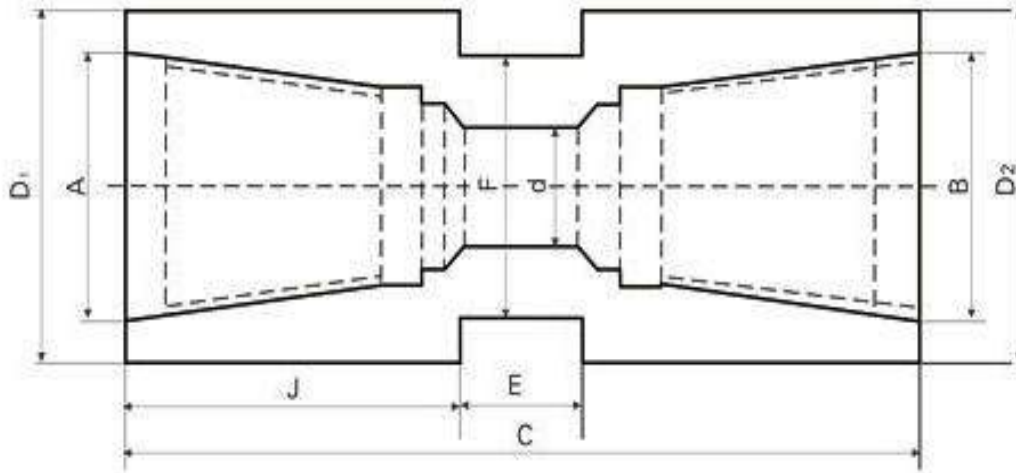


Drill Tube



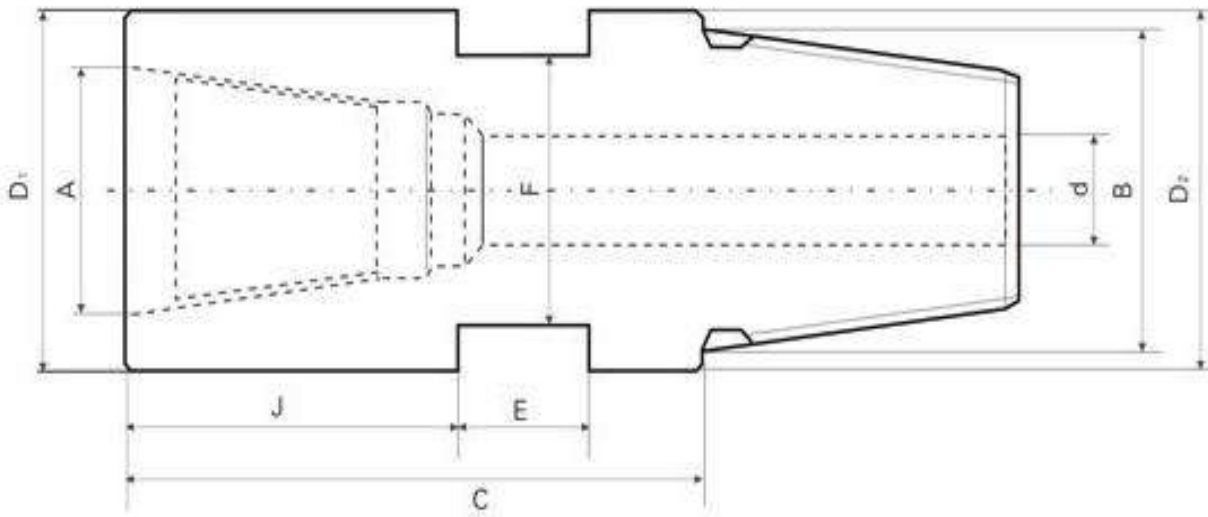
| A OD (mm) | C C Tool joints | | | J Length shoulder to flat | | D Across flat (mm) | Allowed pull down (kNm) | Approx weight (3m long/kgs) | E Width spanner flat (mm) |
|-----------------|--------------------|------|------|------------------------------------|-------|--------------------------|----------------------------------|--------------------------------------|---------------------------------------|
| | Connection | C1 | C2 | J1 | J2 | | | | |
| Φ76 | API 2 3/8"REG | 25.4 | 38.1 | 16 | 90.5 | 65 | 5.4 | 26.6 | 38.1 |
| Φ89 | API 2 3/8"REG | 28.6 | 38.1 | 11.1 | 76.2 | 69.8 | 11.2 | 53.4 | 60.3 |
| Φ102 | API 3 1/2"REG | 44.4 | 57.1 | 15.8 | 90.5 | 63.5 | 14.2 | 53.1 | 50.8 |
| Φ114 | API 3 1/2"REG | 38.1 | 57.1 | 15.8 | 69.8 | 92.2 | 22.2 | 77.4 | 69.8 |
| Φ127 | API 3 1/2"REG | 44.4 | 57.1 | 12.7 | 95.2 | 120.6 | 47 | 114 | 50.8 |
| Φ140 | API 3 1/2"REG | 44.4 | 57.1 | 12.7 | 95.2 | 120.6 | 47 | 114 | 50.8 |
| Φ152 | API 4 1/2"REG | 76.2 | 85.7 | 19 | 120.6 | 130.1 | 52.9 | 127 | 60.3 |

Box-Box Adapters



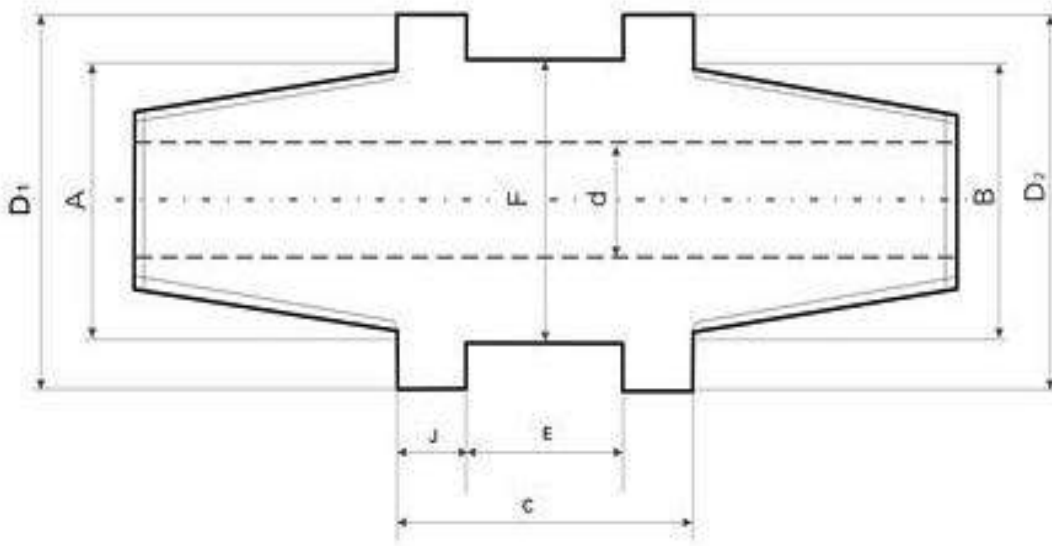
| Connection | | C | J | E | d | Outside diameter | | F |
|---------------|---------------|-------------|----------------------|-------------------------|---------------|------------------|-------------------|------------------|
| Box up A | Box down B | Length (mm) | Length shoulder (mm) | Width spanner flats(mm) | Std bore (mm) | D1 Top D1 (mm) | D2 Bottom D2 (mm) | Across flat (mm) |
| API 2 3/8"REG | API 2 3/8"REG | 219 | 57.1 | 50.8 | 38.1 | 88.9 | 88.9 | 69.85 |
| API 2 7/8"REG | API 2 3/8"REG | 219 | 69.85 | 50.8 | 38.1 | 114.3 | 88.9 | 98.4 |
| API 2 3/8"REG | API 3 1/2"REG | 128.6 | 57.1 | 50.8 | 38.1 | 88.9 | 114.3 | 69.8 |
| API 3 1/2"REG | API 3 1/2"REG | 241.3 | 69.85 | 50.5 | 44.45 | 114.3 | 114.3 | 98.4 |
| API 3 1/2"REG | API 4 1/2"REG | 269.8 | 88.9 | 50.8 | 58.7 | 114.3 | 146 | 98.4 |
| API 2 7/8"REG | API 3 1/2"REG | 241.3 | 69.85 | 50.8 | 44.45 | 114.3 | 51.7 | 98.4 |
| API 4 1/2"REG | API 2 7/8"REG | 250.8 | 76.2 | 50.8 | 44.45 | 114.3 | 146 | 98.4 |

Pin-Box Adapters



| Connection | | C Length (mm) | J Length shoulder (mm) | E Width spanner flats(mm) | d Std bore (mm) | Outside diameter | | F Across flat (mm) |
|---------------|---------------|---------------------|---------------------------------|------------------------------------|--------------------------|----------------------|------------------------|-----------------------------|
| Box up A | Pin down B | | | | | D1 Top D1 (mm) | D2 ButtomD2 (mm) | |
| API 2 3/8"REG | API 2 3/8"REG | 140 | 50.8 | 65 | 24 | 88.9 | 88.9 | 69.85 |
| API 2 3/8"REG | API 2 7/8"REG | 134.9 | 69.85 | 50.8 | 31.75 | 88.9 | 88.9 | 69.85 |
| API 2 3/8"REG | API 3 1/2"REG | 146 | 39.7 | 50.8 | 25.4 | 114.3 | 88.9 | 98.4 |
| API 3 1/2"REG | API 3 1/2"REG | 101.6 | 39.7 | 50.8 | 44.45 | 127 | 127 | 98.4 |
| API 3 1/2"REG | API 4 1/2"REG | 134.9 | 39.7 | 50.8 | 52.4 | 114.3 | 146 | 98.4 |
| API 2 7/8"REG | API 2 3/8"REG | 134.9 | 39.7 | 50.8 | 31.75 | 88.9 | 88.9 | 69.85 |
| API 2 7/2"REG | API 3 1/2"REG | 134.9 | 39.7 | 50.8 | 44.45 | 114.3 | 114.3 | 98.4 |
| API 2 7/8"REG | API 4 1/2"REG | 174.6 | 100 | 50.8 | 44.45 | 114.3 | 146 | 98.4 |

Pin-Pin Adapters



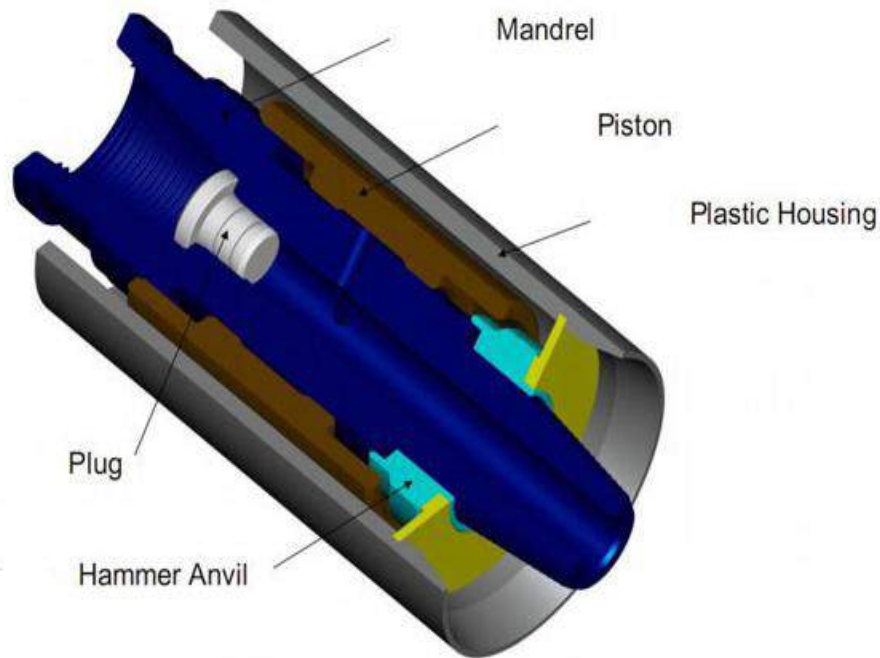
| Connection | | C | J | E | d | Outside diameter | | F |
|---------------|---------------|-------------|----------------------|--------------------------|---------------|------------------|-------------------|------------------|
| Pin up A | Pin down B | Length (mm) | Length shoulder (mm) | Width spanner flats (mm) | Std bore (mm) | D1 Top D1 (mm) | D2 Bottom D2 (mm) | Across flat (mm) |
| API 2 3/8"REG | API 2 3/8"REG | 70 | 20 | 50.8 | 24 | 78 | 78 | 65 |
| API 2 3/8"REG | API 2 7/8"REG | 152.4 | 50.8 | 50.8 | 25.4 | 88.9 | 88.9 | 69.85 |
| API 2 3/8"REG | API 3 1/2"REG | 96 | 35 | 50.8 | 24 | 114.3 | 114.3 | 98.4 |
| API 3 1/2"REG | API 3 1/2"REG | 177.8 | 63.5 | 50.8 | 44.45 | 114.3 | 114.3 | 98.4 |
| API 3 1/2"REG | API 4 1/2"REG | 92 | 12.7 | 69.85 | 38.1 | 114.3 | 139.7 | 120.7 |
| API 4 1/2"REG | API 4 1/2"REG | 203.2 | 76.2 | 50.8 | 58.7 | 146 | 146 | 120.7 |

Long Shank Bit



| Diameter | Gauge | Front | Flushing holes | Weight (Kg) | Part-No |
|----------|-------|-------|----------------|-------------|-------------|
| 90 | 9×11 | 7×11 | 3×8 | 5.8 | HROD76-90 |
| 95 | 9×12 | 7×11 | 3×8 | 6.0 | HROD76-95 |
| 105 | 9×12 | 7×12 | 3×10 | 6.4 | HROD76-105 |
| 105 | 9×13 | 7×12 | 3×13 | 9.1 | HROD89-105 |
| 115 | 9×14 | 6×14 | 3×13 | 9.7 | HROD89-115 |
| 127 | 9×14 | 7×14 | 3×13 | 10.6 | HROD89-127 |
| 115 | 9×14 | 6×14 | 3×13 | 12.6 | HROD102-115 |
| 127 | 9×14 | 7×14 | 3×13 | 13.2 | HROD102-127 |
| 140 | 9×16 | 9×16 | 3×13 | 14.5 | HROD102-140 |
| 140 | 9×16 | 9×16 | 3×15 | 21.3 | HROD127-140 |
| 152 | 9×16 | 9×16 | 3×15 | 23.1 | HROD127-152 |
| 165 | 10×16 | 10×16 | 3×15 | 23.9 | HROD127-165 |

Back Hammer



Backhammer

In case of jamming of any drilling tool in the boring process, the backhammer will help you save time and money.

The backhammer may be mounted on the drill pipe joint between the borehole gripper and the swivel head, thus creating a combined effect of effective reverse impact and vibration.

Sturdy and reliable, the backhammer is composed of three components and a plastic housing which acts both as an exhaust emissions guider and a muffler. With regards to the maintenance, it's only necessary to keep it clean and the linking section well protected when the backhammer is not in use.

| Product | Pressure | Thread | Total Length (mm) | Diameter (mm) | Weight (Kg) |
|---------|----------|------------|-------------------|---------------|-------------|
| BH140 | 8 Bar | API 3 1/2" | 510 | 140.0 | 31.0 |
| BH160 | 8 Bar | API 3 1/2" | 540 | 160.0 | 44.0 |
| BH190 | 8 Bar | API 4 1/2" | 580 | 190.0 | 63.0 |
| BH240 | 8 Bar | | 600 | 240.0 | 85.0 |

Breakout Bench



Breakout Bench Operation Method

- ◆ Put hammer in the bench.
- ◆ Adjust the position of hammer and wrench; use wrench to block the top sub side of hammer; let wrench and jack in the same face.
- ◆ Fix K-shaped base with nut.
- ◆ Fix wrench with nuts.
- ◆ Shake handle of Jack slowly till top sub away from hammer.
- ◆ After top sub dismantled, grease the jack, release nuts, discharge the K-shaped base and turn around the Hammer.
- ◆ Adjust the position of hammer and wrench ; use wrench to block the drive chuck of hammer;let wrench and jack in the same face.
- ◆ Fix hammer.
- ◆ Fix K-shaped base and the wrench with nut.
- ◆ Shake handle of Jack slowly till drive chuck away from hammer.

"Globe Drilling Industry Experts"

No matter what kinds of rock-Soft rock,loose-medium rock, hard rock and any other special formations, just tell us what you need,our special Tailored service is waiting for you upon you demand.



KEMAICO USA CORPORATION

Add: 300 Knightsbridge Pkwy Ste. 113 Lincolnshire, IL 60069

Tel:1-847-9136878

Fax:1-847-9136879

Email: office@kemaico.com info@kemaico.com

Web: www.kemaico.com